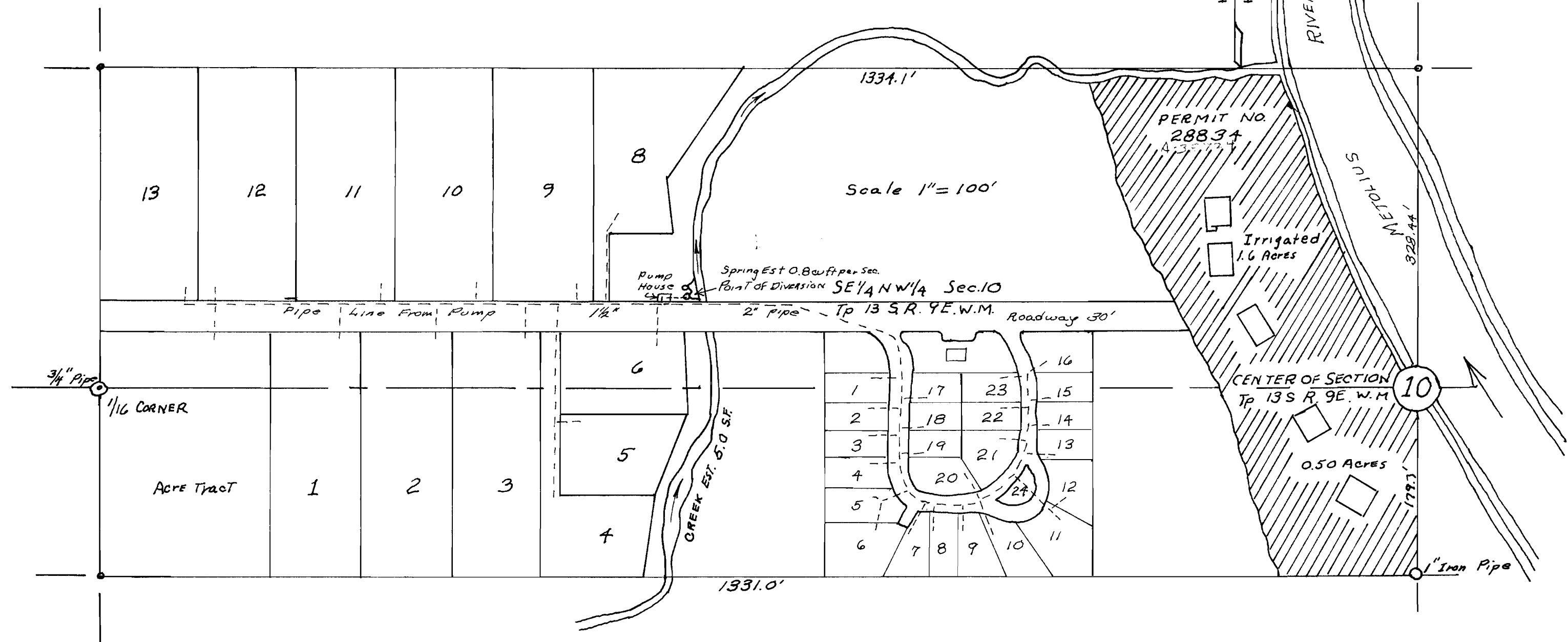


RECEIVED
JUN 20 1988
STATE ENGINEER
SALEM OREGON

RECEIVED
JUN 20 1988
STATE ENGINEER
SALEM OREGON

MAP TO ACCOMPANY LEON FOSTER APPLICATION
FOR DOMESTIC RIGHT ON TRACTS AND TRAILER PARK
FROM SPRING AND IRRIGATION RIGHT FROM CREEK
S.E. 1/4 N.W. 1/4 AND NE 1/4 SW 1/4 SEC 10, T.P. 13 S. R. 9 E.
CAMP SHERMAN, OREGON



Application No. 45025
Permit No. 33653