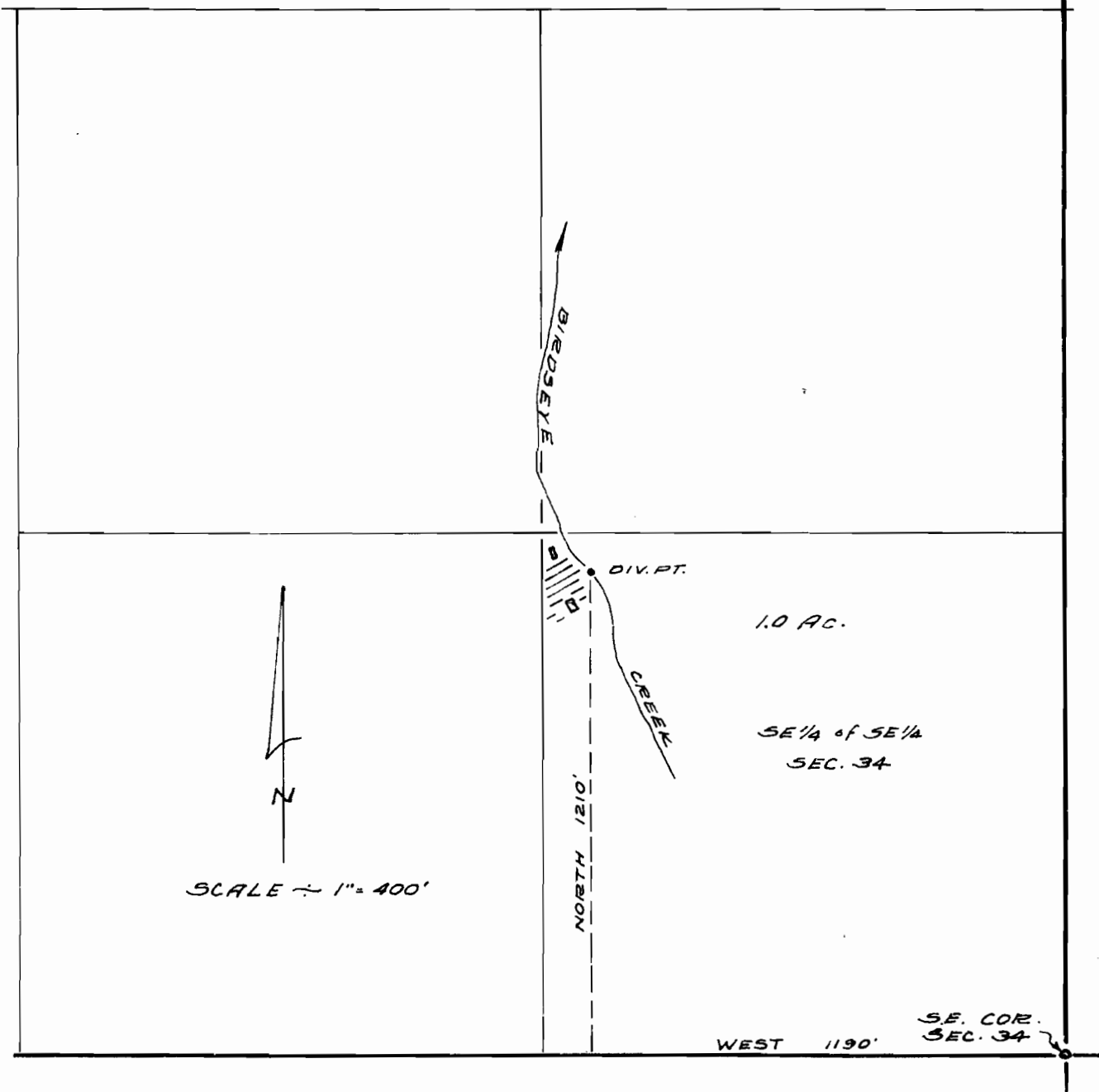


MAP TO ACCOMPANY APPLICATION TO  
APPROPRIATE WATER FROM BIRDSEYE  
CREEK FOR IRRIGATION.

BY

**JAMES W. LEHRMAN-FOR-  
ELSIE G. DUNN**

LOCATED IN THE SE<sup>1</sup>/<sub>4</sub> OF SE<sup>1</sup>/<sub>4</sub>, SEC. 34  
T.36S., R.4W., W.M.      MAY 24, 1968



APPLICATION No. 45069  
Permit No. 33679

**RECEIVED**  
MAY 27 1968  
STATE ENGINEER  
SALIDA OREGON