

MT. HOOD LOOP HIGHWAY NO. 1146 & 1446

S89°42'W 80.14 C

7-1

8

7

10

25

20

29

13

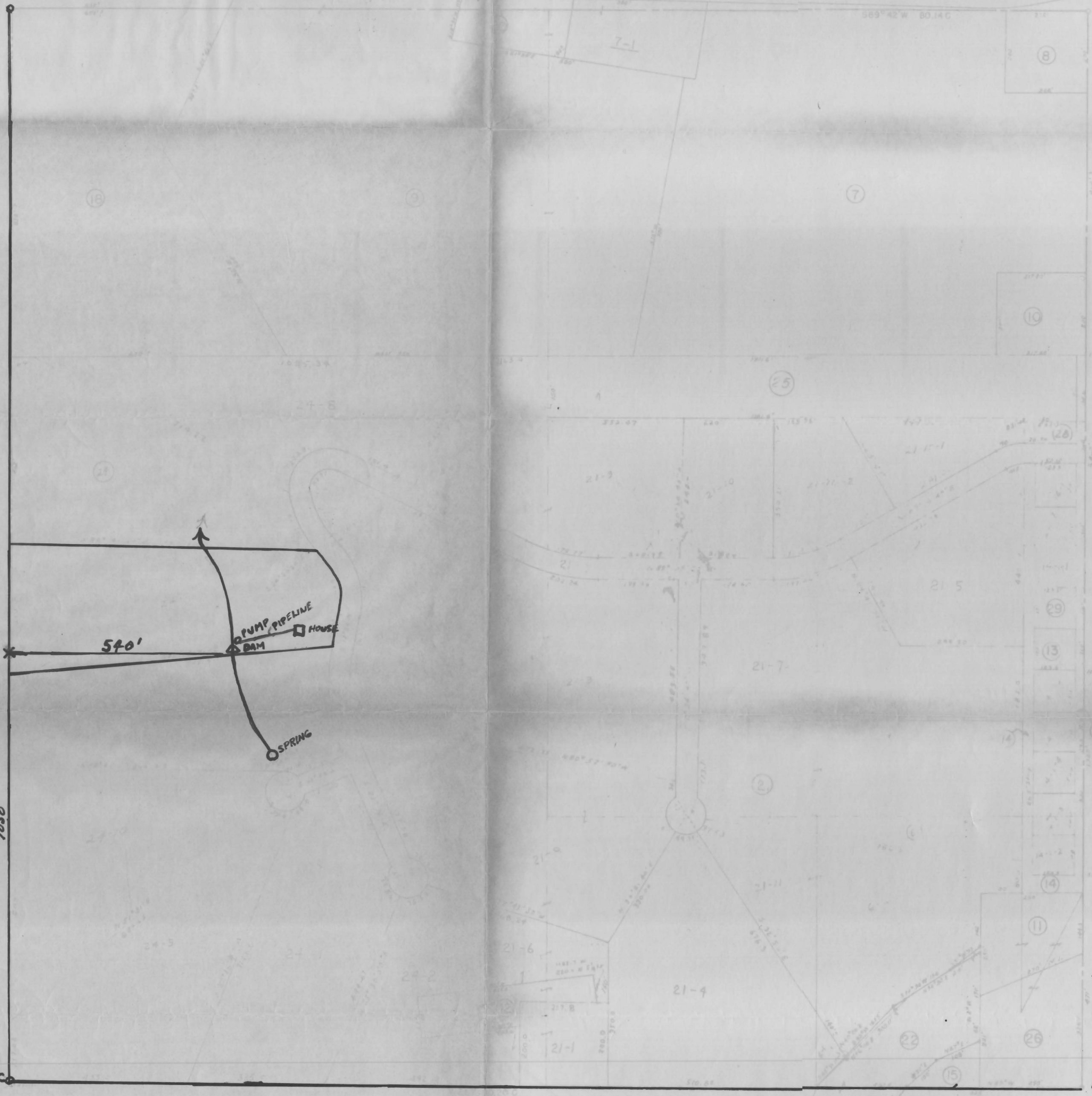
14

11

22

26

1/4 COR



CTR SEC 26

RECEIVED
 DEC 16 1968
 STATE ENGINEER
 SALEM OREGON

Application No. 45484
 Permit No. 33847



COMPILED IN OFFICE OF
 RUFUS E. WOOD
 CLACKAMAS CO. ASSESSOR
 FRANK SPERB DRAFTSMAN
 BY A.W. BURKE
 SCALE 1" = 200'

NE 1/4 SEC 26
 T2S R6E

22	23
27	28
34	35