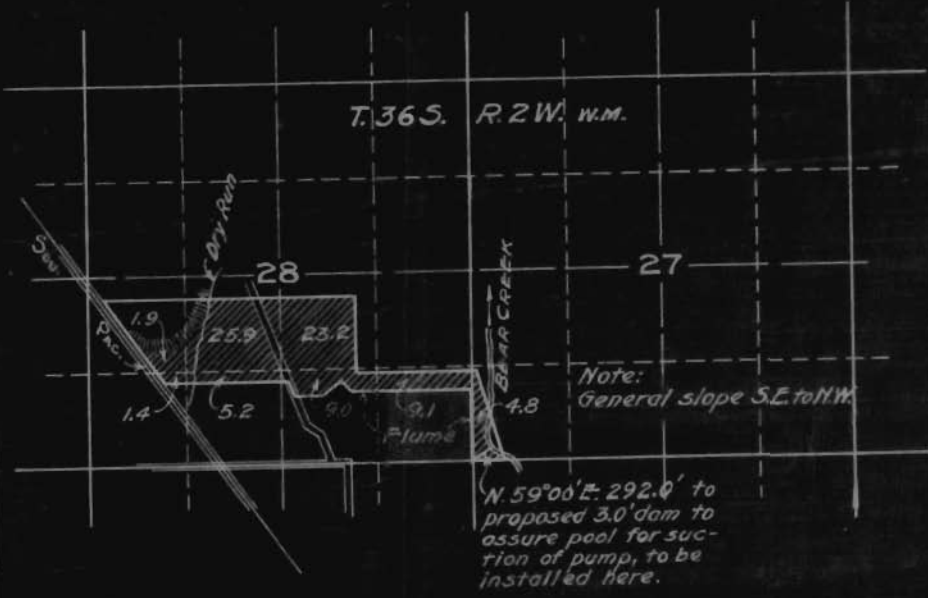


OFFICE OF STATE ENGINEER
RECEIVED
OCT 10 1911

1771

Application No. 1771
Permit No. 889
Irrigable Land
and Proposed Plan of Irrigation on
Mr. Elden's Ranch
Scale: 2" = 1 mile.

Medford, Ore. H.G. Stoeckmann,
October 5, 1911. Civil Engr.



OFFICE OF STATE ENGINEER
RECEIVED
MAR 10 1911
H. G. STOECKMANN

I, H.G. Stoeckmann, of Medford, Oregon do hereby certify that this map was made from notes taken during an actual survey made by me on Oct. 4, 1911, and that it correctly represents the works described in the accompanying application, together with the location of streams and other ditches in the immediate vicinity, and has written thereon the area in each smallest legal subdivision which it is proposed to irrigate.

H.G. Stoeckmann
Surveyor.