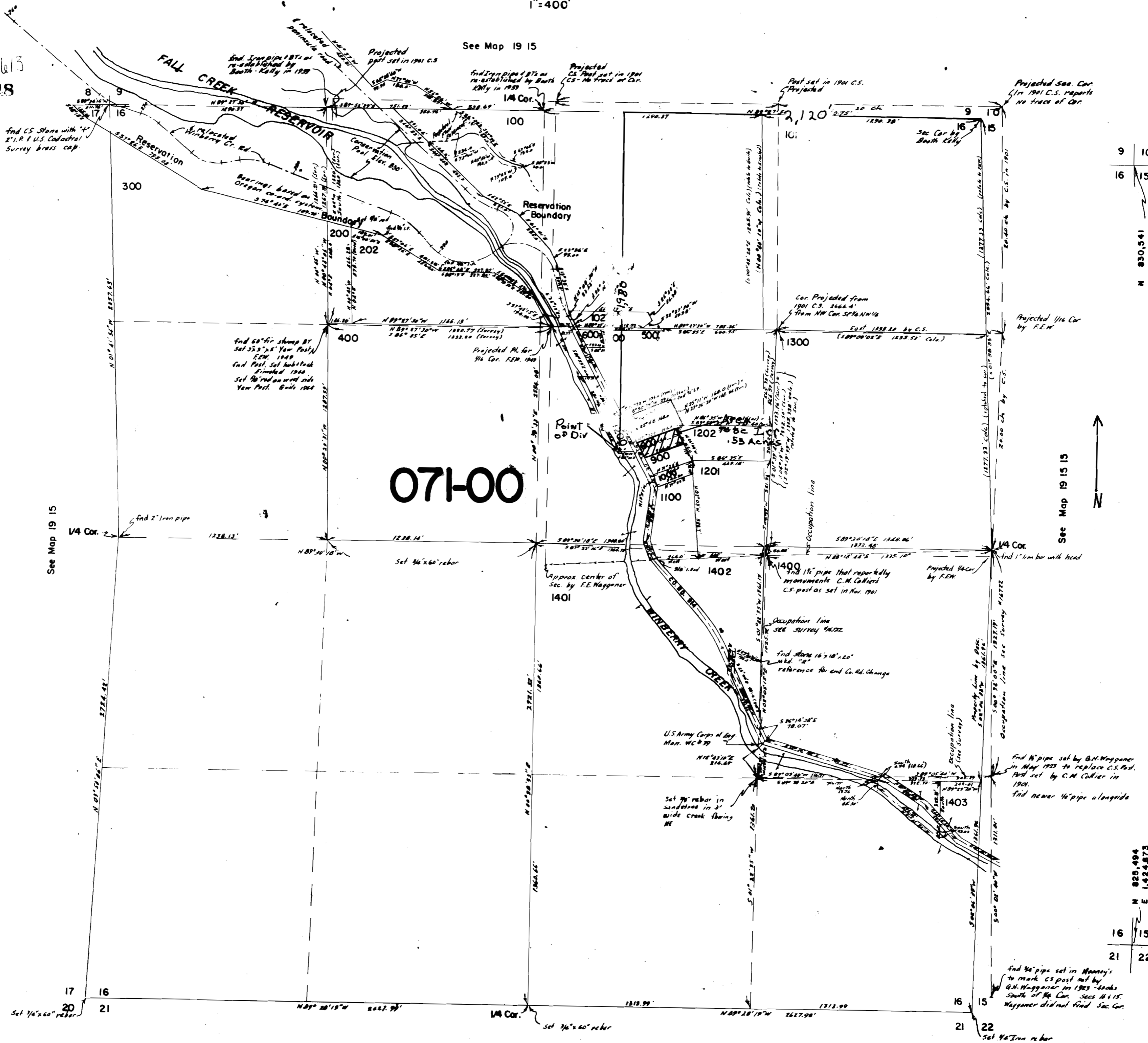


STATE ENGINEER
SALEM, OREGON

Application No. 50613
Permit No. 38218



071-00

8 9
17 16
N 830,727
E 1,419,373

17 16
20 21
N 835,307
E 1,418,370

9 10
16 15
N 830,341
E 1,424,334

16 15
21 22
N 825,494
E 1,424,873

See Map 19 15

See Map 19 15 15

See Map 19 15