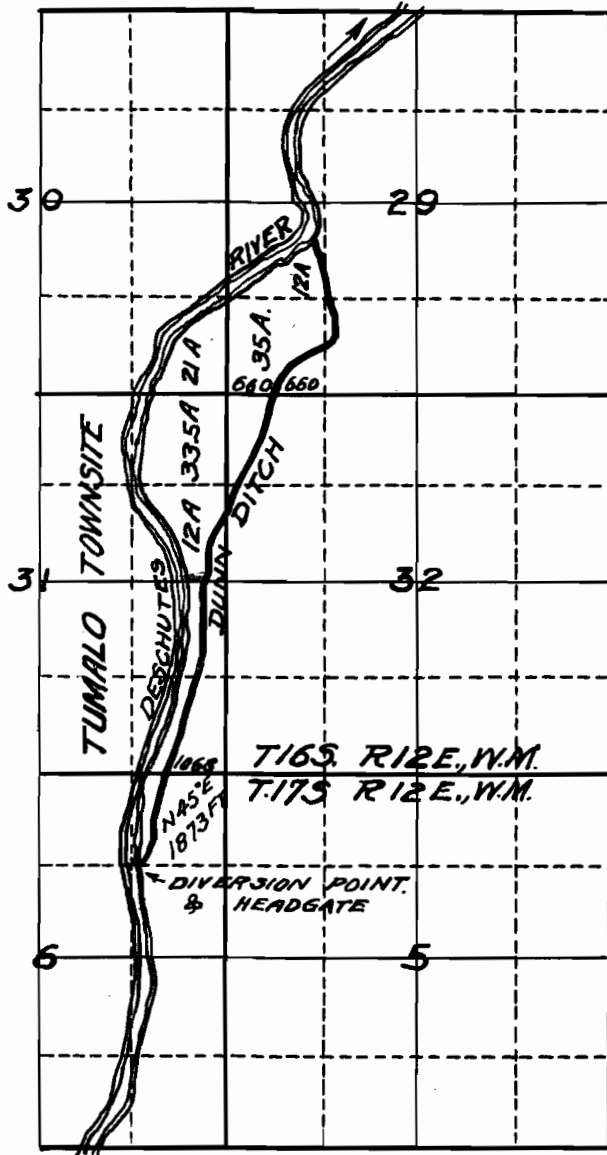


# MAP OF DUNN DITCH. AT TUMALO, OREGON

SCALE  
2 INCHES = 1 MILE

FRED N. WALLACE,  
SURVEYOR.



5640  
3438

I, Fred N. Wallace, of Tumalo, Oregon, do hereby certify that this map was made from notes taken during an actual survey made by me on August 27<sup>th</sup> to 31<sup>st</sup>, inclusive, 1912, and that it correctly represents the works described in the accompanying application together with the location of streams and other ditches in the immediate vicinity, and has written thereon the area in each smallest legal subdivision which it is proposed to irrigate.

*Fred N. Wallace*  
SURVEYOR.

Appl No 5640  
Per No 3438  
Cer No 4897

0 9 4 8