

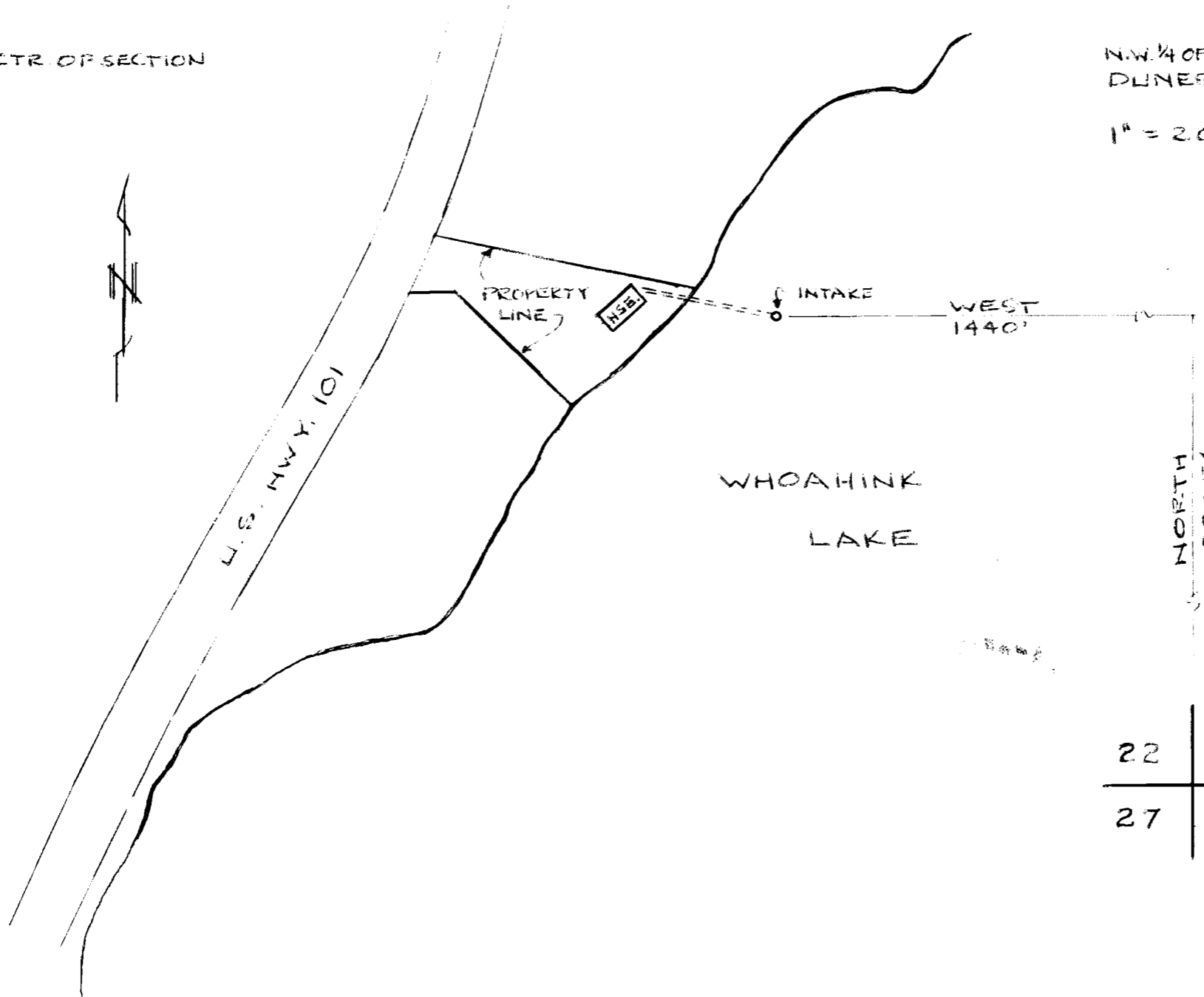
SURFACE WATER USE MAP  
FOR SILSALA VALLEY PLAZA, INC

N.W. 1/4 OF S.E. 1/4, SEC. 22, T19S, R12W, W.M.  
DUNES CITY, LANE COUNTY, OREGON

1" = 200'

29 AUG. 1969

CTR. OF SECTION



RECEIVED  
AUG 31 1969  
SURFACE WATER  
PERMITS DIVISION  
SEASIDE, OREGON

APPL. NO. 46375  
Permit No. 34402

22	23
27	26