

T. 38 S., R. 24 E., W.M.
T. 39 S., R. 24 E., W.M.

T. 38 S., R. 25 E., W.M.
T. 39 S., R. 25 E., W.M.

T. 39 S., R. 23 E., W.M.
T. 40 S., R. 23 E., W.M.

T. 39 S., R. 24 E., W.M.
T. 40 S., R. 24 E., W.M.

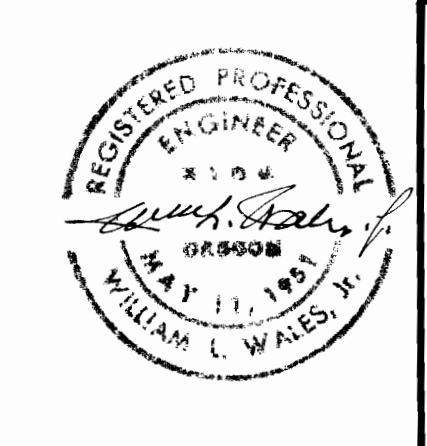
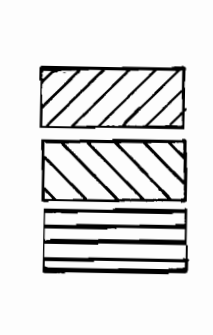
T. 39 S., R. 24 E., W.M.

T. 39 S., R. 25 E., W.M.
T. 40 S., R. 24 E., W.M.

T. 40 S., R. 23 E., W.M.
T. 40 S., R. 24 E., W.M.

T. 40 S., R. 24 E., W.M.
T. 40 S., R. 25 E., W.M.

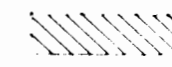


LEGEND:
 PRIMARY IRRIGATION FROM TWENTY MILE CREEK
 PRIMARY IRRIGATION FROM DEEP CREEK
 SUPPLEMENTARY IRRIGATION FROM DEEP CREEK
 INTERIOR WATER DISTRIBUTION SYSTEM NOT SHOWN

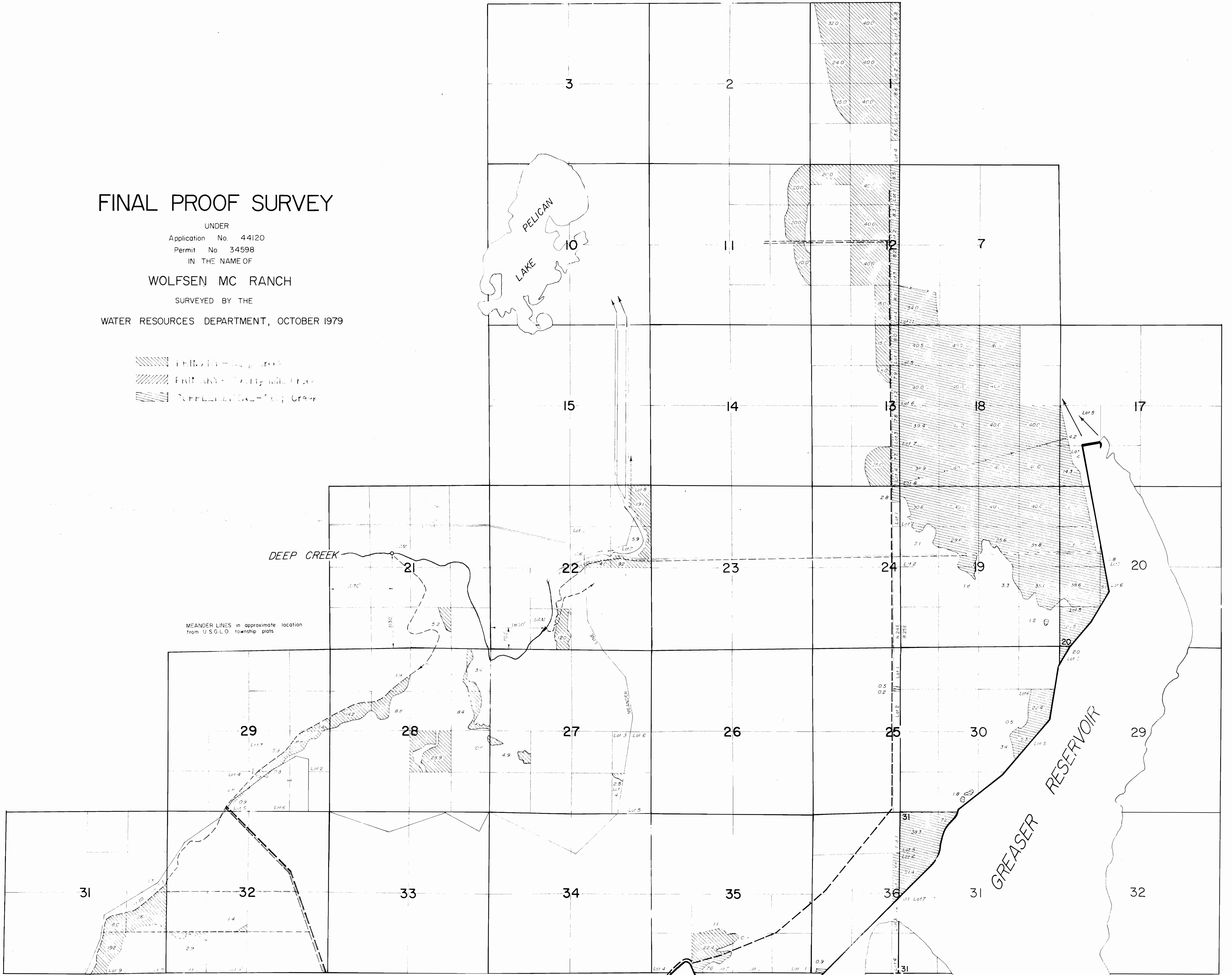


REVISED 12-28-67
 MAP SHOWING
 ADDITIONAL LANDS TO BE IRRIGATED
 FROM
 TWENTY MILE CRK & DEEP CR'K
 BY
 WARNER VALLEY STOCK COMPANY
 LAKE COUNTY OREGON
 SCALE 1/4" = 1 MILE
 MAP PREPARED BY
 WILLIAM L. WALES JR. CONSULTING ENGINEER
 KLAMATH FALLS, OREGON AUGUST 1967

FINAL PROOF SURVEY

UNDER
 Application No. 44120
 Permit No. 34598
 IN THE NAME OF
WOLFSEN MC RANCH
 SURVEYED BY THE
 WATER RESOURCES DEPARTMENT, OCTOBER 1979

-  FILLWATER - Deep Creek
-  FILLWATER - Greaser Reservoir
-  REFLECTORIAL - Deep Creek



MEANDER LINES in approximate location
 from U.S.G.L.O. township plats

TOWNSHIP 40 SOUTH, RANGES 23 & 24 EAST, W.M.

SEE SHEET #1



TOWNSHIPS 39 & 40 SOUTH, RANGES 24 & 25 E., W.M.

FINAL PROOF SURVEY

UNDER

Application No's R-25395, 25396

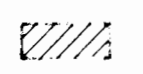
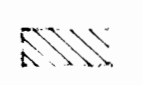
Permit No's R-1678, 23218

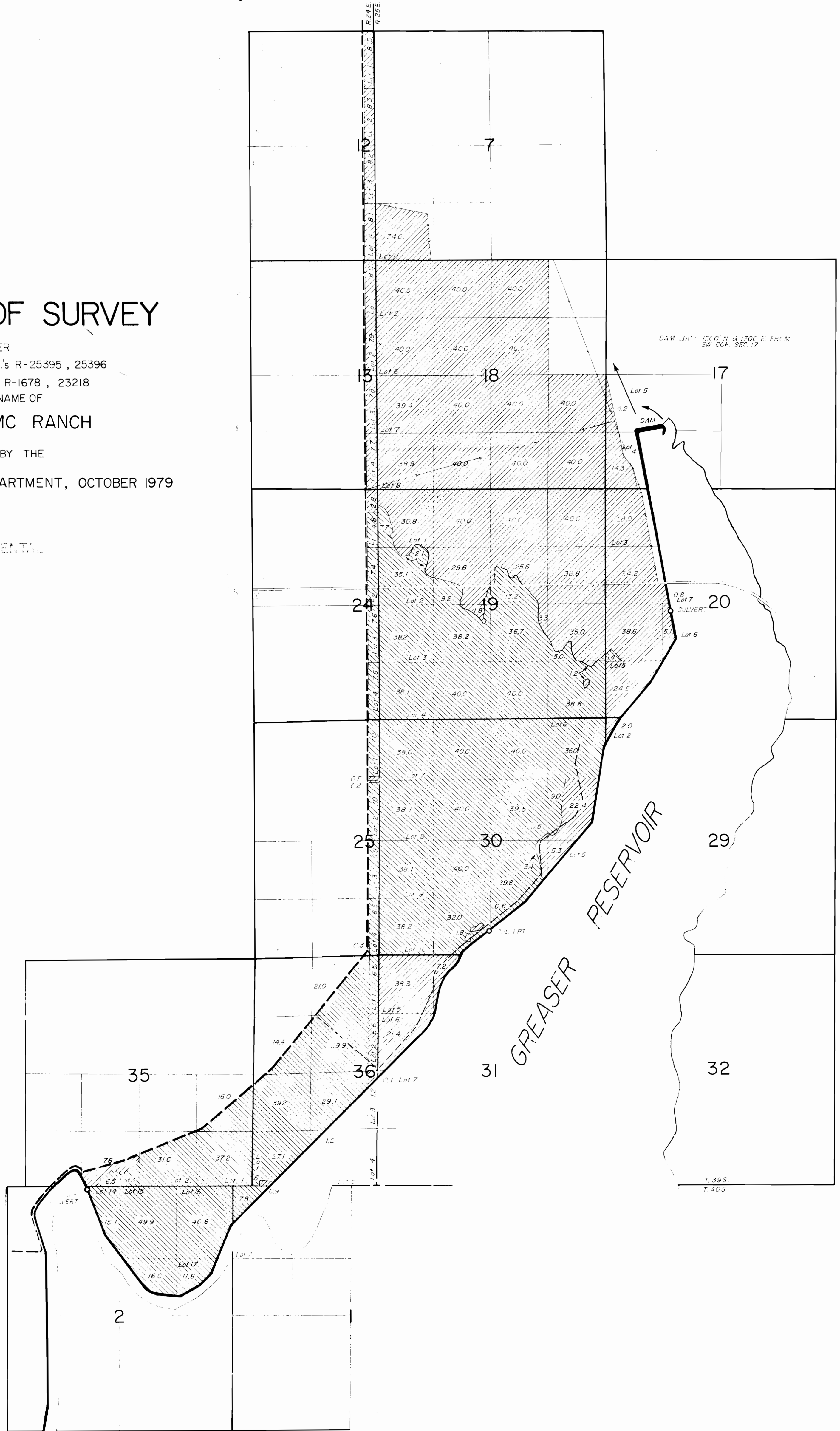
IN THE NAME OF

WOLFSEN MC RANCH

SURVEYED BY THE

WATER RESOURCES DEPARTMENT, OCTOBER 1979

 PRIMARY
 SUPPLEMENTAL



E 5 10