

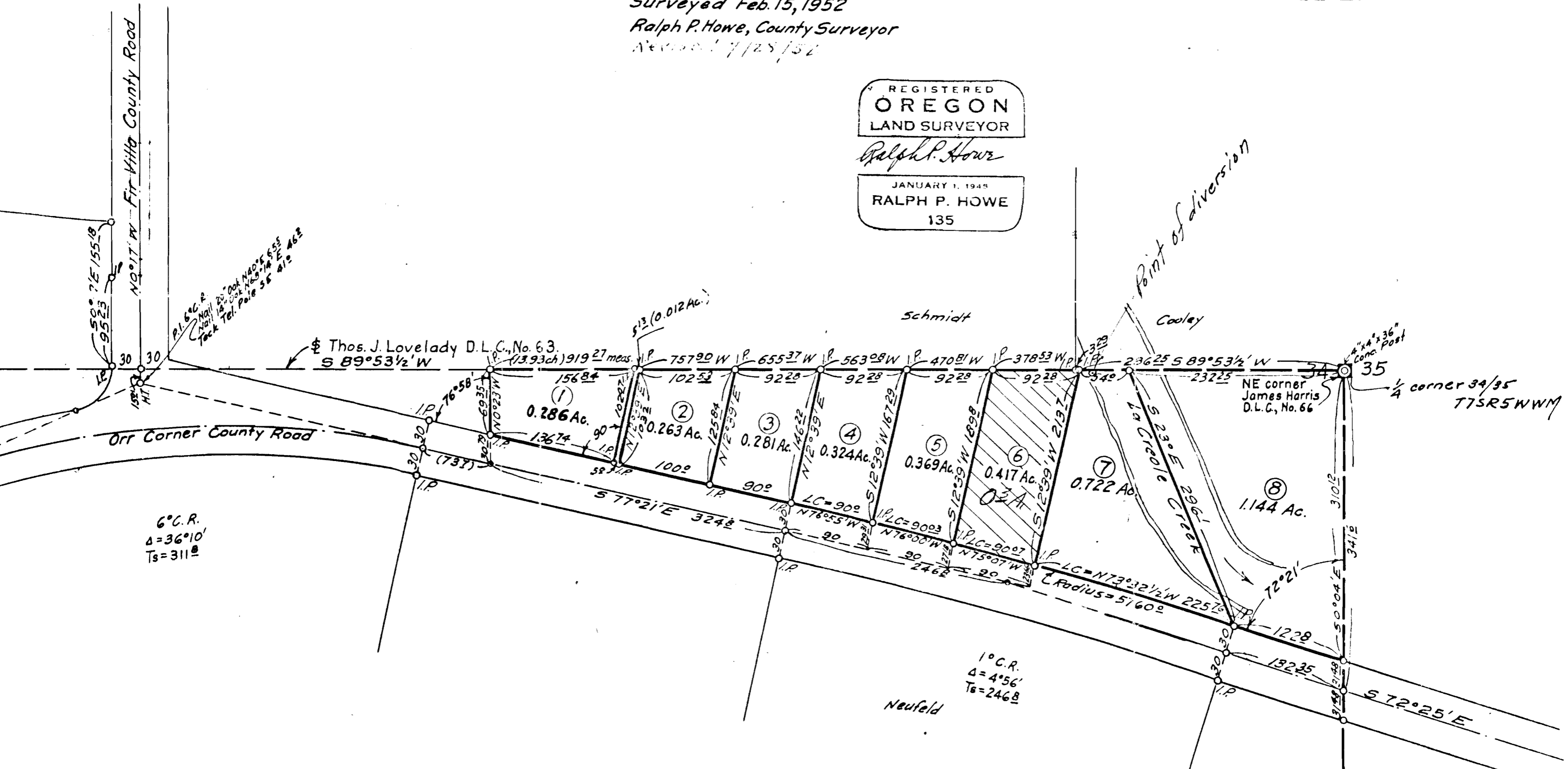
RECEIVED  
AUG 22 1969  
STATE ENGINEER  
SALEM OREGON

SURVEY  
IN  
James Harris D.L.C., No. 66.  
T. 7S. R. 5W. W.M.

Scale 1"=100'  
Bearings True  
Surveyed Feb. 15, 1952  
Ralph P. Howe, County Surveyor  
Approved 7/25/52

76346  
34619

REGISTERED  
OREGON  
LAND SURVEYOR  
Ralph P. Howe  
JANUARY 1, 1945  
RALPH P. HOWE  
135



Thos. J. Lovelady D.L.C., No. 63.  
S 89°53 1/2' W  
(13.93 ch) 919.27 meas.

① 0.286 Ac.  
② 0.263 Ac.  
③ 0.281 Ac.  
④ 0.324 Ac.  
⑤ 0.369 Ac.  
⑥ 0.417 Ac.  
⑦ 0.722 Ac.  
⑧ 1.144 Ac.

Point of diversion  
Schmidt  
Coolley

NE corner  
James Harris  
D.L.C., No. 66  
1/4 corner 34/35  
T7SR5WWM

6° C.R.  
Δ=36°10'  
Ts=311'

1° C.R.  
Δ=4°56'  
Ts=2468'  
Neufeld