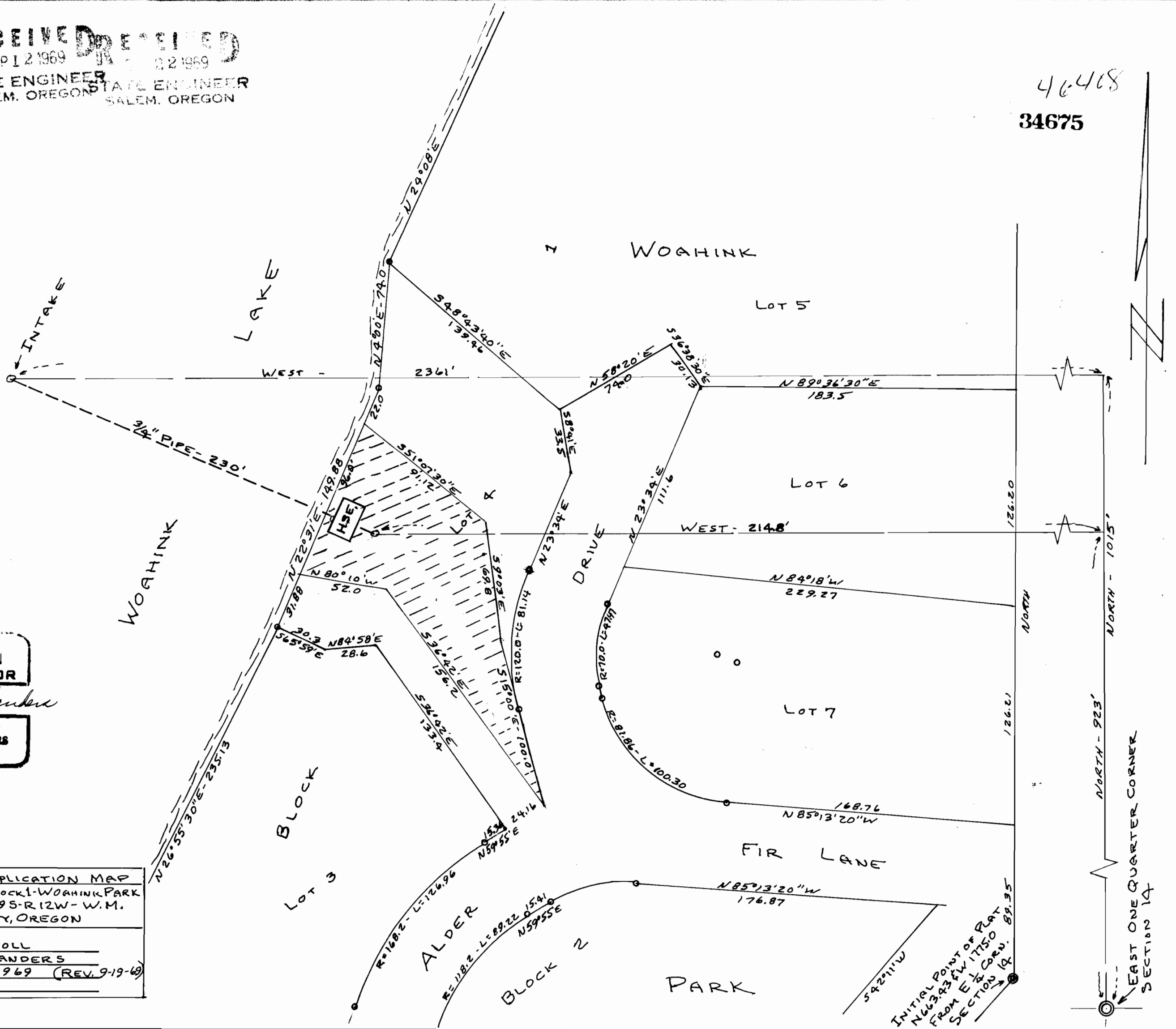


RECEIVED
 SEPT 2 1969
 STATE ENGINEER
 SALEM, OREGON

46468
 34675



REGISTERED
 OREGON
 LAND SURVEYOR

Clifford L. Sanders

OCTOBER 15, 1956
 CLIFFORD L. SANDERS
 888

WATER RIGHTS APPLICATION MAP
 S 1/4 PART LOT 4 - BLOCK 1 - WOAHINK PARK
 SW 1/4, NE 1/4, SECTION 14 - T19S - R12W - W.M.
 LANE COUNTY, OREGON

OWNER - LESTER L. MOLL
 DRAWN BY: C. L. SANDERS
 DATE: SEPT. 5, 1969 (REV. 9-19-69)
 SCALE: 1" = 50'

INITIAL POINT OF PLAT
 N 66° 23' 47" W 175.50
 FROM E 1/4 CORNER
 SECTION 14

EAST ONE QUARTER CORNER
 SECTION 14