

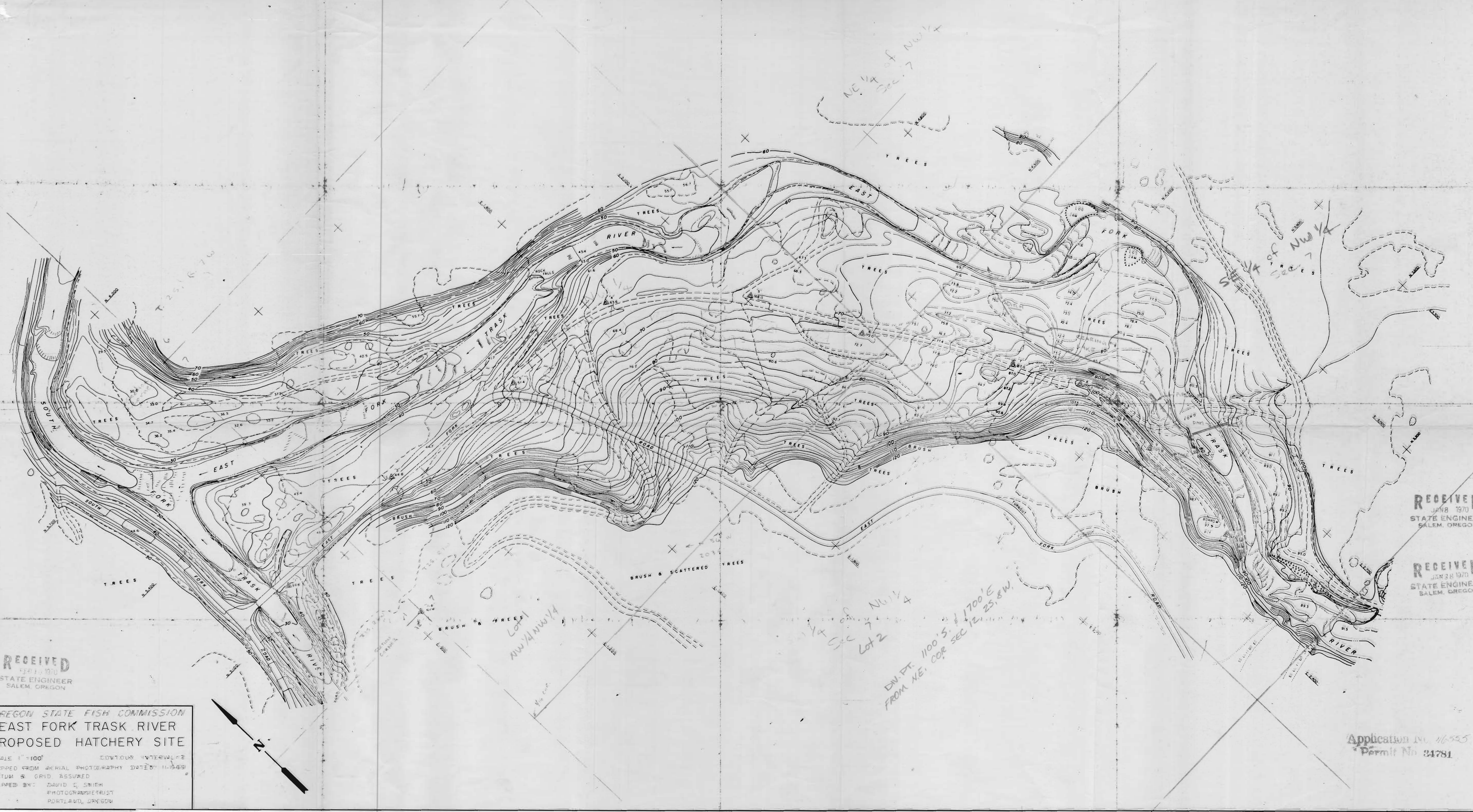
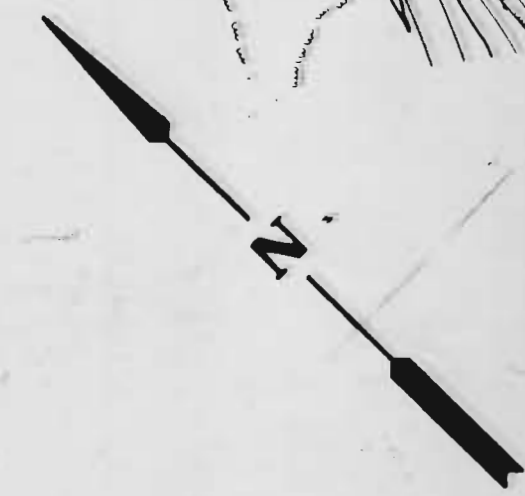
RECEIVED
JUN 19 1970
STATE ENGINEER
SALEM, OREGON

RECEIVED
JUN 8 1970
STATE ENGINEER
SALEM, OREGON

RECEIVED
JUN 24 1970
STATE ENGINEER
SALEM, OREGON

OREGON STATE FISH COMMISSION
EAST FORK TRASK RIVER
PROPOSED HATCHERY SITE

SCALE 1" = 100'
CONTOUR INTERVAL = 2'
MAPPED FROM AERIAL PHOTOGRAPHY DATED 11-19-69
DATUM & GRID ASSUMED
MAPPED BY: DAVID C. SMITH
PHOTOGRAMMETRIST
PORTLAND, OREGON



Application No. 16555
Permit No. 34781