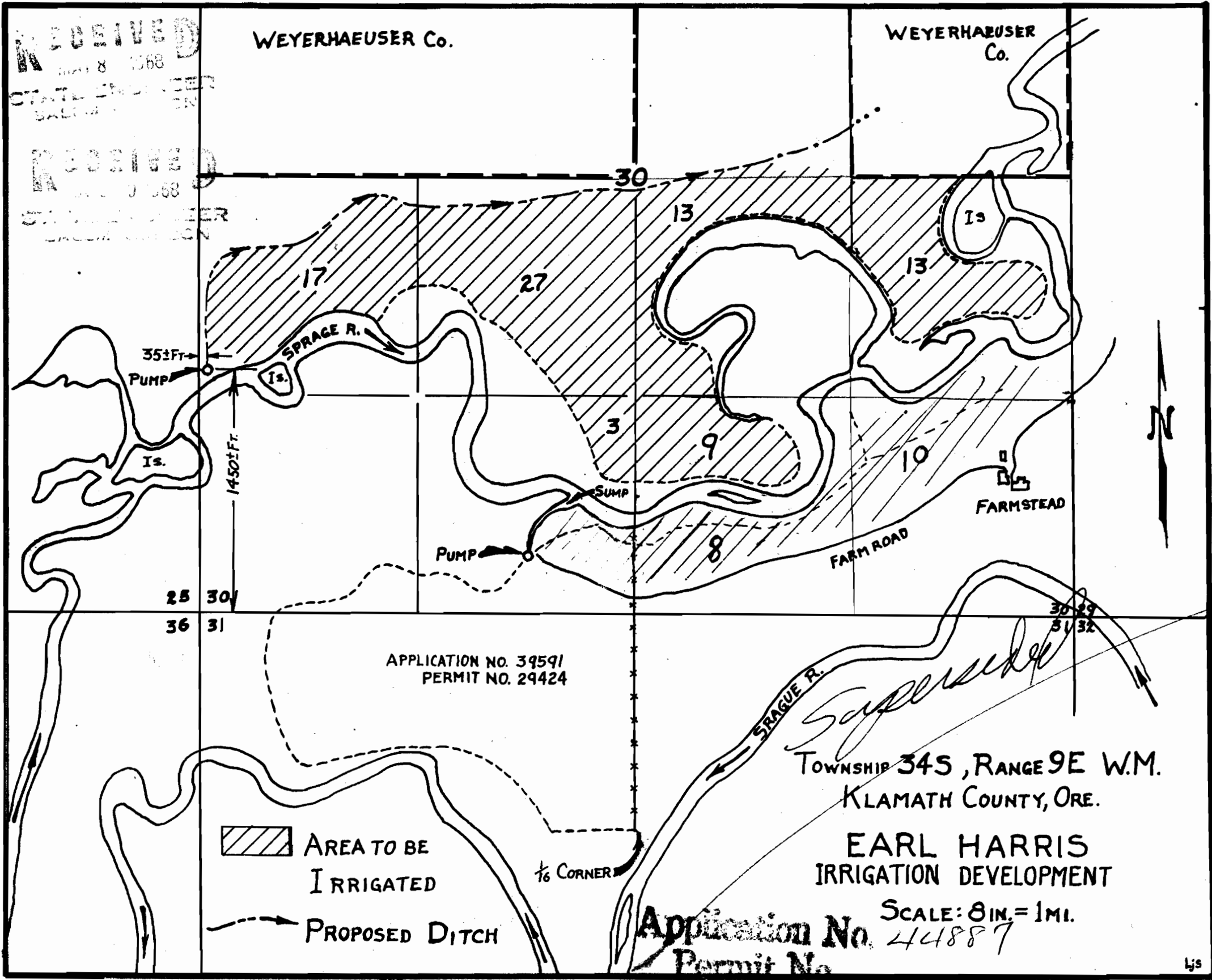


RECEIVED
MAY 8 1968
STATE ENGINEER
SALMON
RECEIVED
MAY 10 1968
STATE ENGINEER
SALMON

WEYERHAEUSER Co.

WEYERHAEUSER Co.



35±FT
PUMP
1450±FT

PUMP

SUMP

FARMSTEAD

FARM ROAD

APPLICATION NO. 39591
PERMIT NO. 29424

TOWNSHIP 34S, RANGE 9E W.M.
KLAMATH COUNTY, ORE.

EARL HARRIS
IRRIGATION DEVELOPMENT

SCALE: 8 IN. = 1 MI.

Application No. 44887
Permit No.

AREA TO BE IRRIGATED
PROPOSED DITCH

1/16 CORNER