

I, Geo. E. Tonney, of Myrtle Point, Oregon do here by certify that this map was made from notes taken during an actual survey made by me on the 25th. day of August, 1917 and that it correctly represents the works described in the accompanying application together with the location of streams and has written thereon the area in each smallest subdivision.

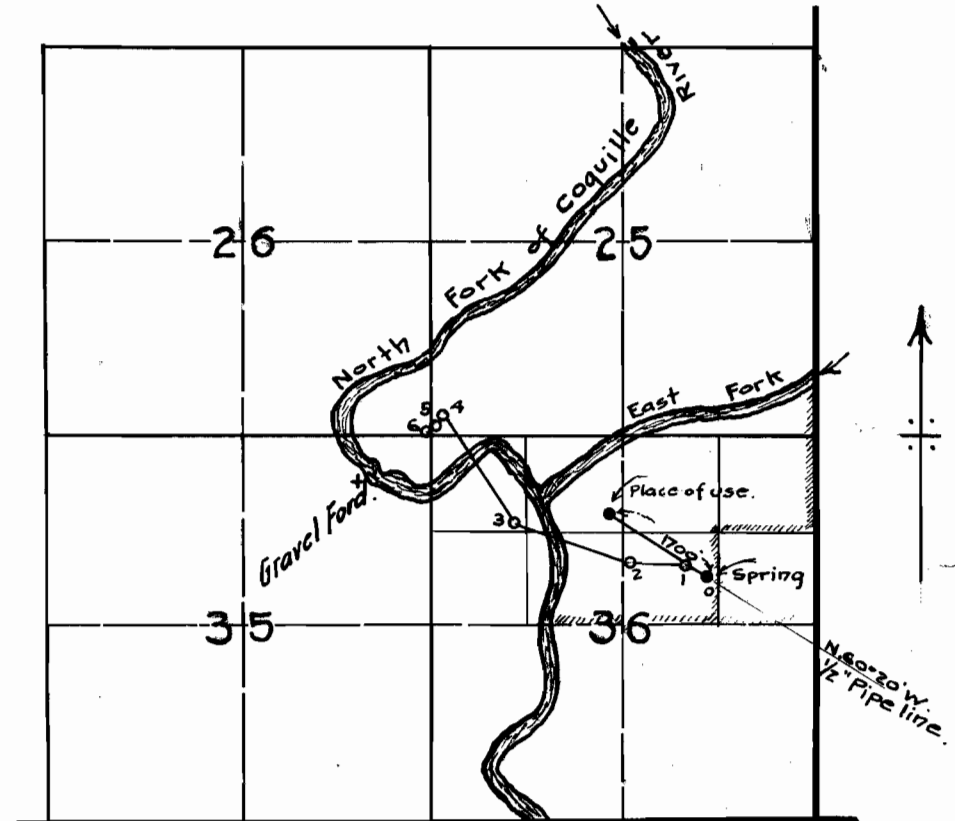
Geo. E. Tonney
Surveyor.

Copy of Field notes. Tie to Section Cor.

- 0 to 1 - N. 60° 20' W. - 300'
 - 1 " 2 - N. 85° 50' W. - 925'
 - 2 " 3 - N. 67° 35' W. - 1492'
 - 3 " 4 - N. 39° 40' W. - 1785'
 - 4 " 5 - S. 43° 40' W. - 114'
 - 5 " 6 - S. 71° 00' W. - 88'
 - 6 to Cor. - S. 14° 30' E. - 35'
- O = Place of Diversion.

A — 5706
P — 3499

T. 28 S., R. 12 W.



In Coos County, Ore.

Map
accompanying application for permit
to appropriate water
for J. W. Bright.
Aug. 25, 1917. Scale 1" = 2 mi.