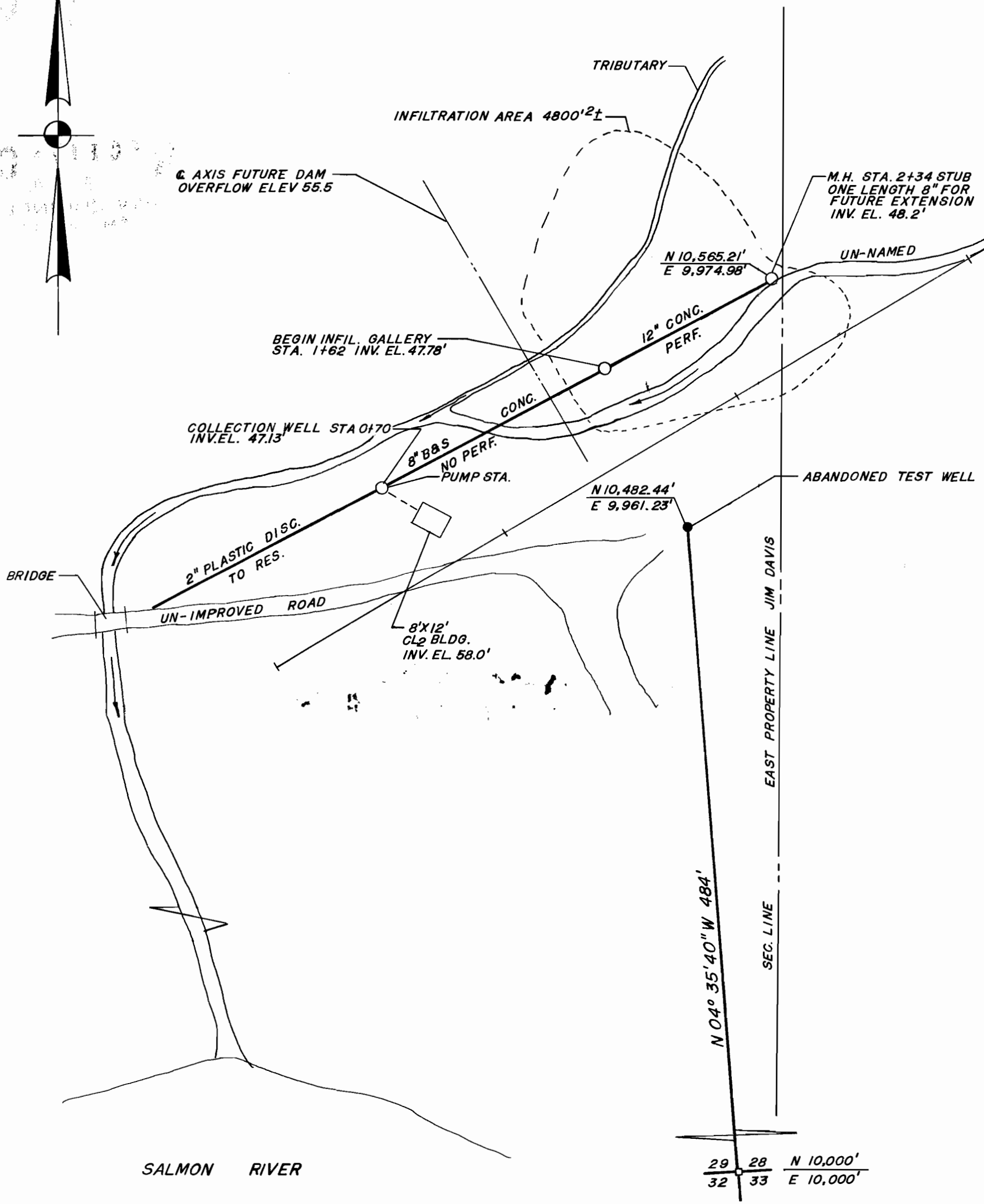


**RECEIVED**  
APR 28 1970  
STATE ENGINEER  
SALEM, OREGON

**RECEIVED**  
JUL 6 1970  
STATE ENGINEER  
SALEM, OREGON



Application No. 4660  
Permit No. 35001

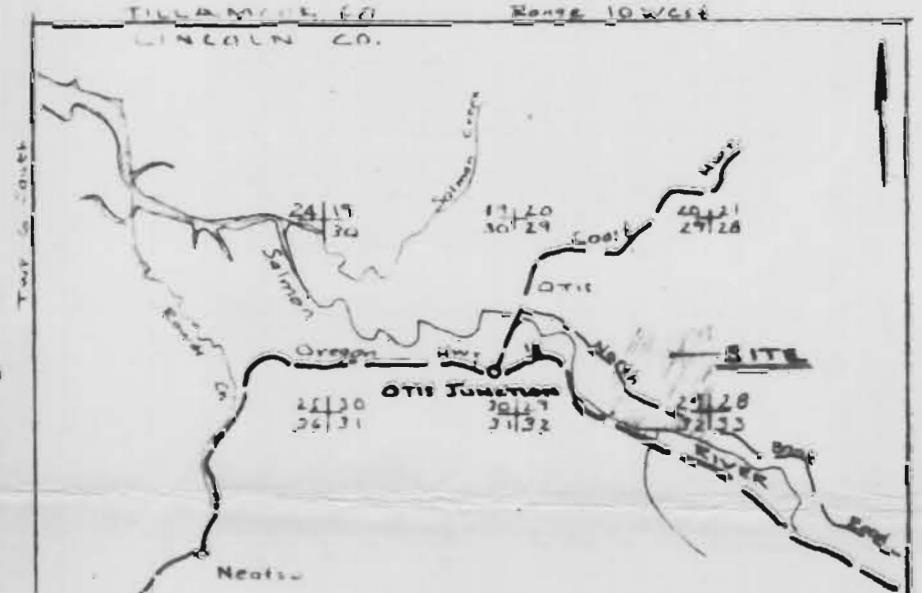


**RIVER BEND PARK**  
SITE PLAN OF HORIZONTAL INFILTRATION  
GALLERY COLLECTION SYSTEM SEC. 29, T6S,  
RIOW, WEST OF W.M. LINCOLN CO., OREGON

ZAROSINSKI-TATONE ENGINEERS INC.  
SCALE: 1" = 40' | DATE 4-7-70 | JOB NO. 232 | DRAWN BY: GAG | CHECKED BY: RGT

SALMON RIVER

29 28 N 10,000'  
32 33 E 10,000'

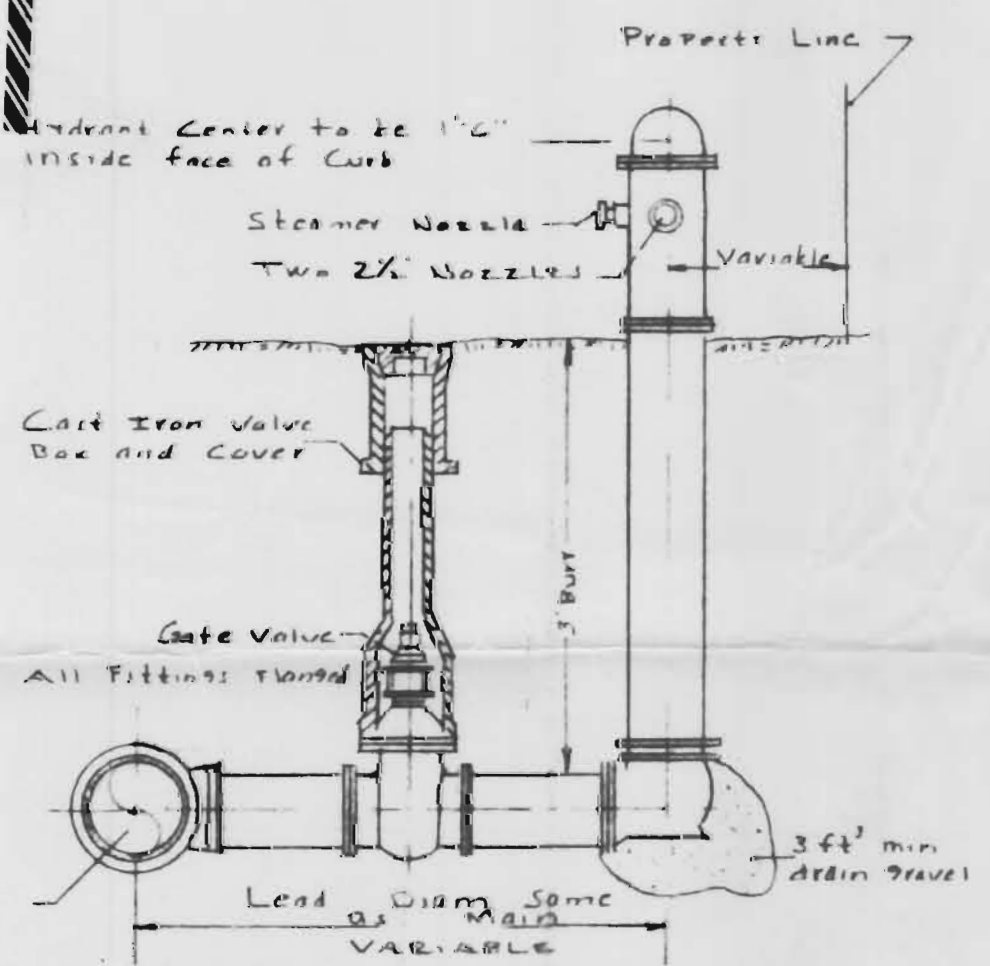


VICINITY MAP  
No. 1000

LEGEND  
GATE VALVE

46805  
35001

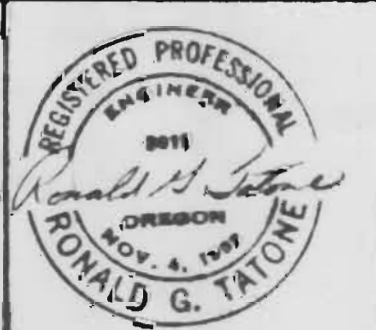
RECEIVED  
JUL 10 1970  
STATE ENGINEER  
WILSON OREGON



TYPICAL HYDRANT ASSEMBLY  
OPTIONAL AS REQ'D BY WATER DIST.

REVISIONS	
Revised Plan to conform with Plat Revisions 4-7-10	
Drawn By: [blank]	Checked: [blank]
Scale: 1"=100'	Date: Jan 12, 70

ZAROSINSKI-TATONE ENGINEERS, INC.  
PORTLAND OREGON



RIVER BEND PARK  
WATER COLLECTION AND DISTRIBUTION SYSTEM  
232  
12