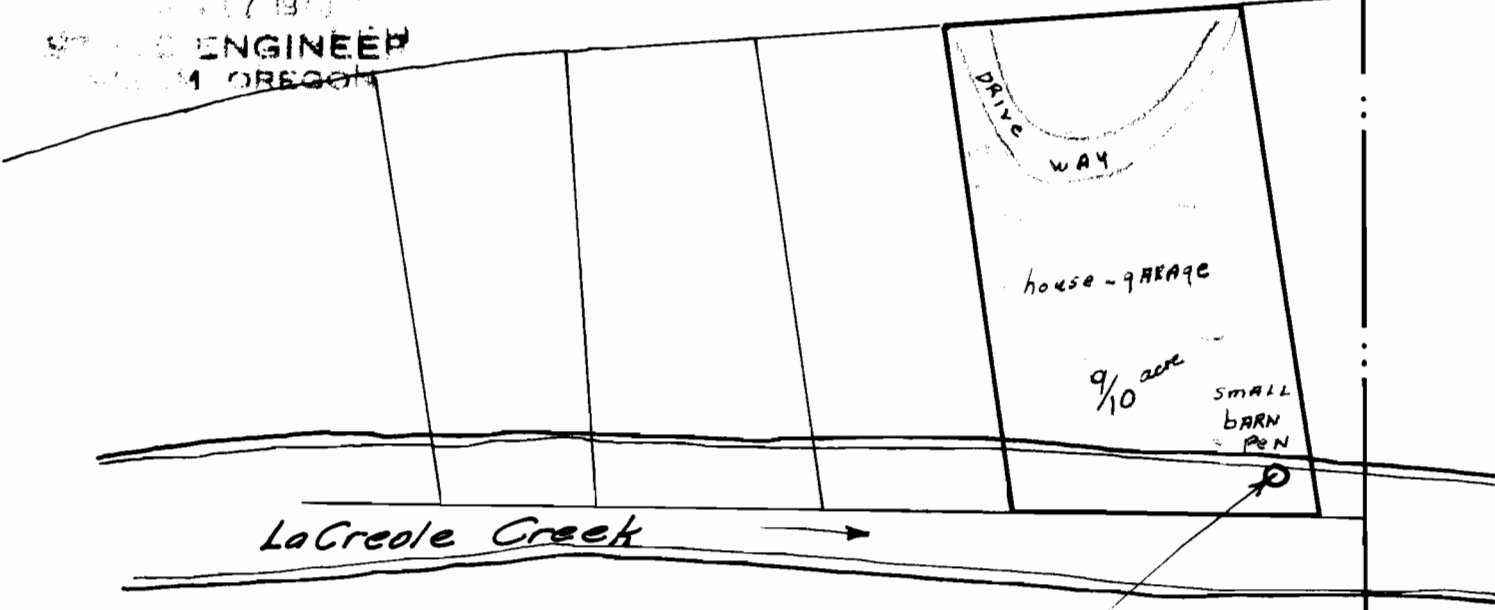


RECEIVED
JUL 17 1970
STATE ENGINEER
SALEM, OREGON

Ellendale Road To Dallas →



RECEIVED
JUL 21 1970
STATE ENGINEER
SALEM, OREGON

Point of diversion
690' North and 45' West
of SE corner Sec. 25

SE 1/4 SE 1/4 Sec 25



T. 7 S., R. 6 W. W. M.
T. 7 S., R. 5 W. W. M.

47098
3 231

25 30
36 31