

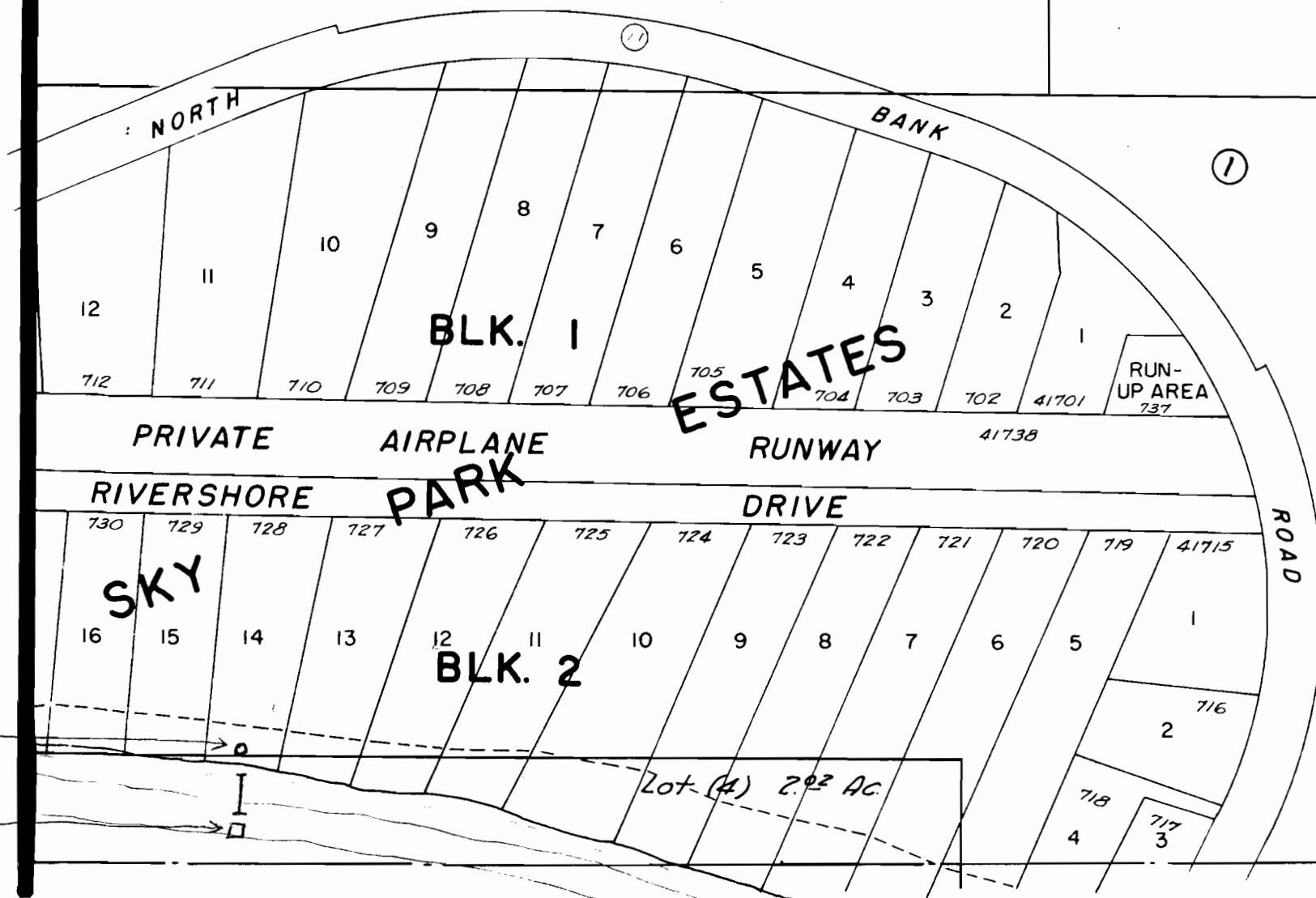
T. 26 S. R. 4 W. NW 1/4 SEC. 13

11 12

14 13

Lot (8) 11.28 Ac.

Lot (9) 11.20 Ac.



DLC # 39

RECEIVED
 AUG 3 1970
 STATE ENGINEER
 SALEM, OREGON

Application No. 47340
 Permit No. 35464

Pump
 Intake