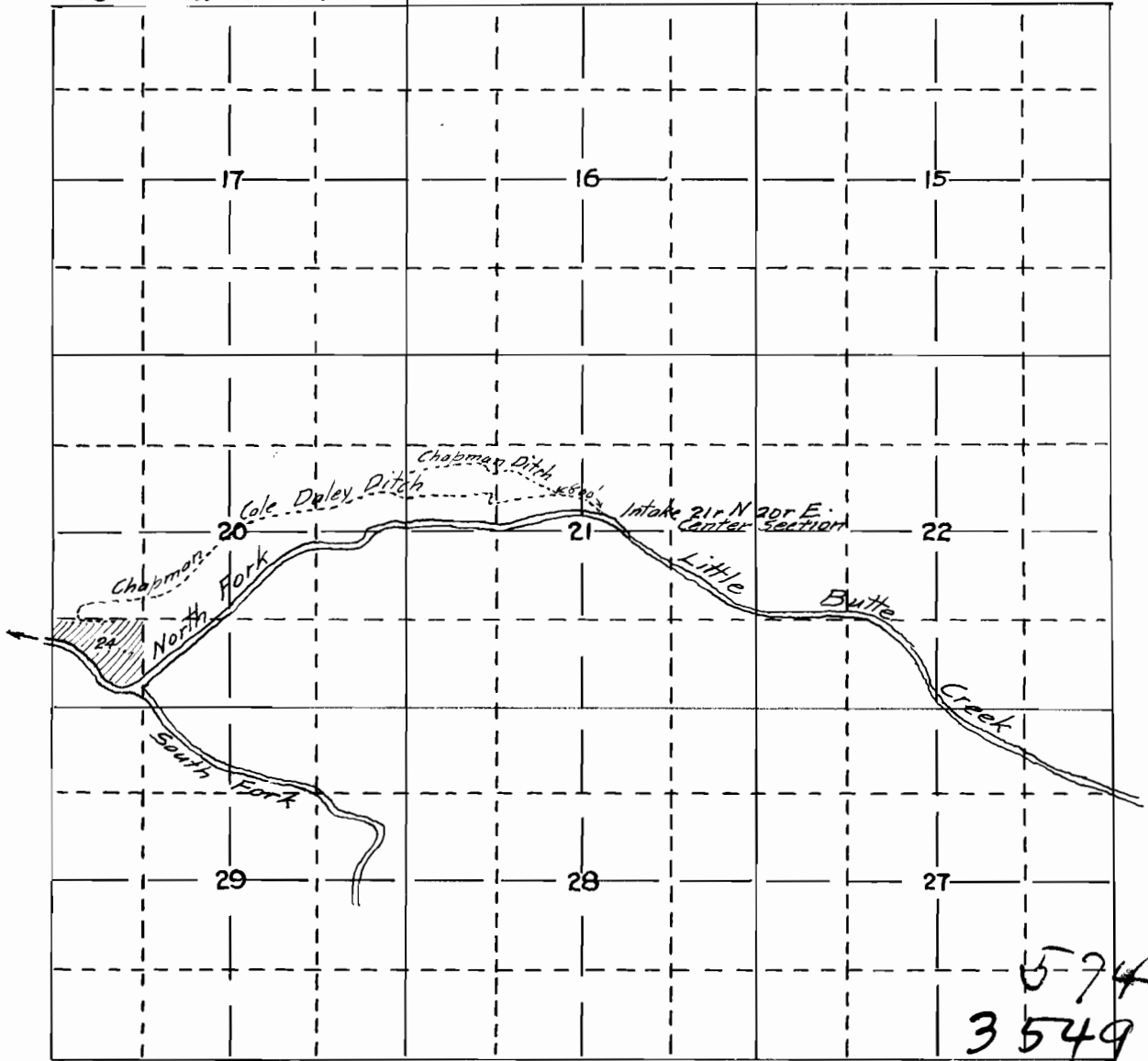


MAP

Accompanying application of J. D. CULBERTSON of LAKE CREEK for permit to appropriate the waters of North Fork of Little Butte Creek tributary to Rogue River. Jackson County. Oregon.

October 1917.  
Medford, Oregon.

T36 S. R. 2 E. W. M.



Map made from notes and measurements taken in the field by J. D. Culbertson and compiled by me, and is a correct representation of lands to be irrigated, streams and ditches in the immediate vicinity.

Fred. N. Cummings, C.E.