

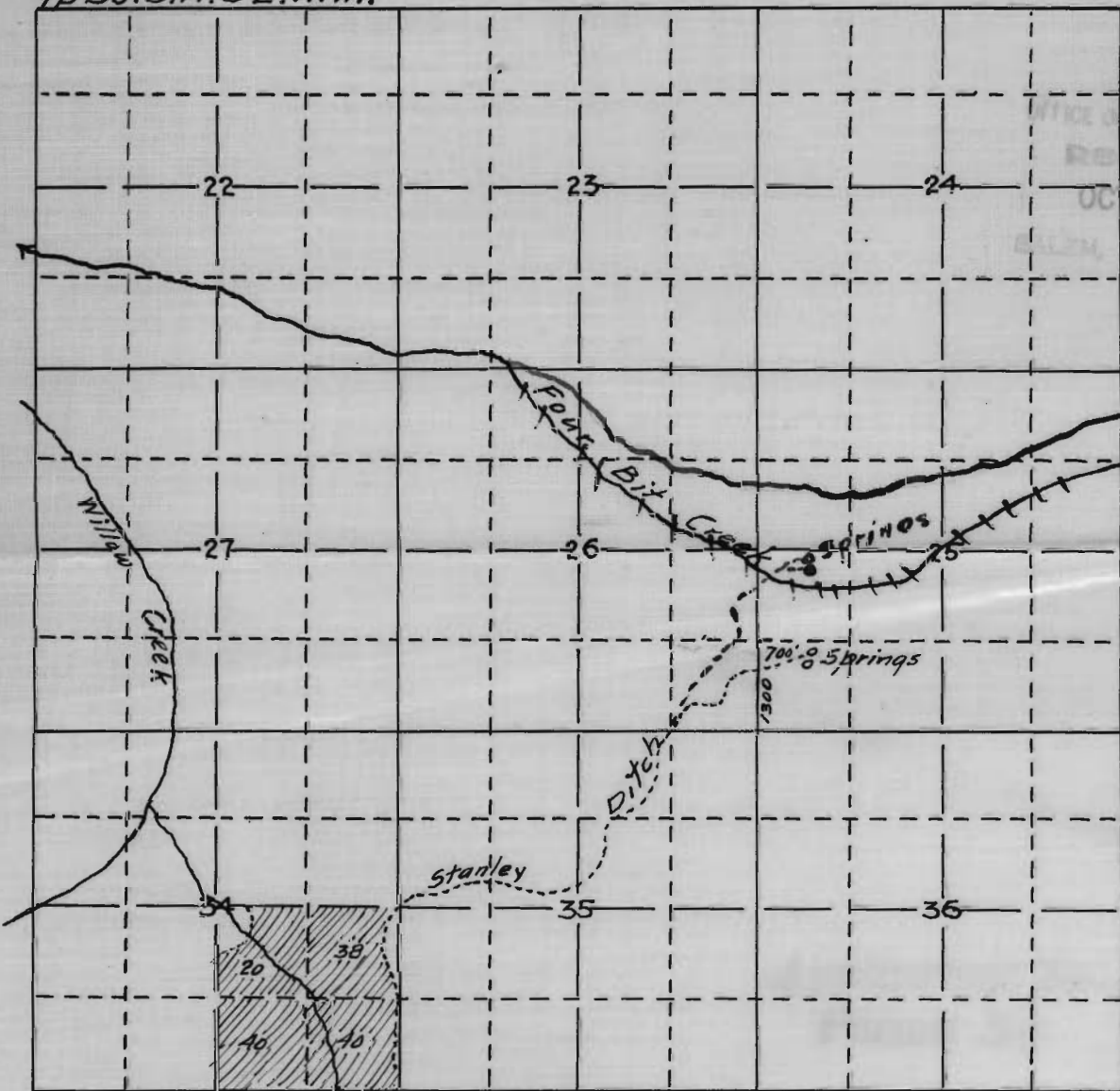
MAP

Accompanying application of THOMAS STANLEY of Butte Falls, Oregon. for permit to appropriate the waters of Springs tributary to Four Bit Creek tributary to Big Butte Creek tributary to Rogue River. Jackson Co. Oregon

October 9th 1917.

Medford Oregon.

Tp 35. S. R. 3 E. W. M.



Map Corrected in red ink. Aug. 17, 1918

5744
3550

Map made from notes and measurements taken in the field by Mr Stanley and survey of ditch the same correctly showing the Lands to be irrigated streams and ditches in the immediate vicinity

Fred. N. Cummings C.E.