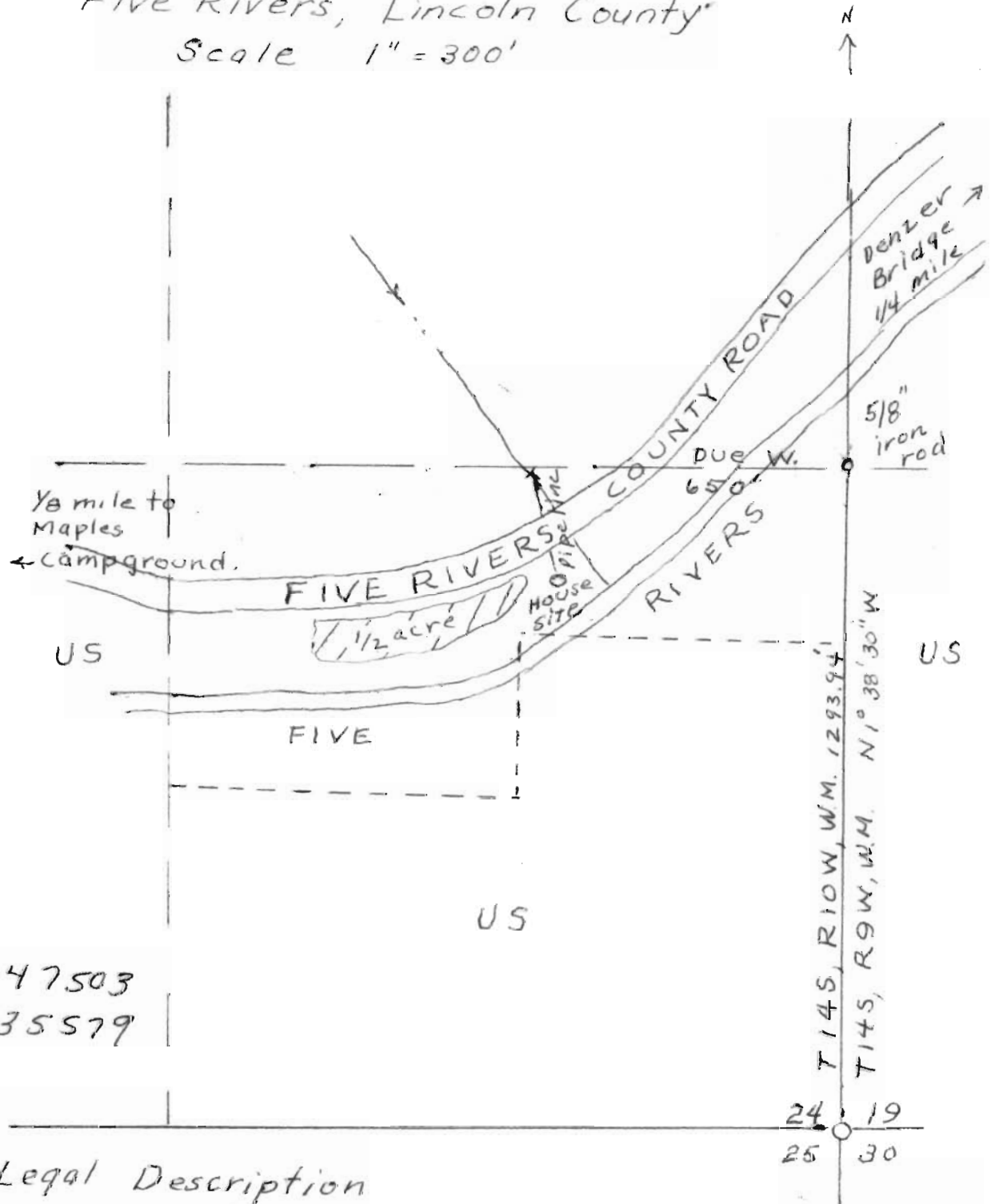


RECEIVED
DEC 7 1970

STATE ENGINEER
SALEM, OREGON

Proposed Water Development
Roy R. and Ethel T. Silen
Five Rivers, Lincoln County
Scale 1" = 300'



Appl. 47503
Per. 35579

Legal Description
N 1/4, SE 1/4, SE 1/4 and S 1/2, NW 1/4, SE 1/4, SE 1/4,
of section 24, T 14 S., R 10 W., W. M.

RECEIVED
JAN 27 1971
STATE ENGINEER
SALEM, OREGON