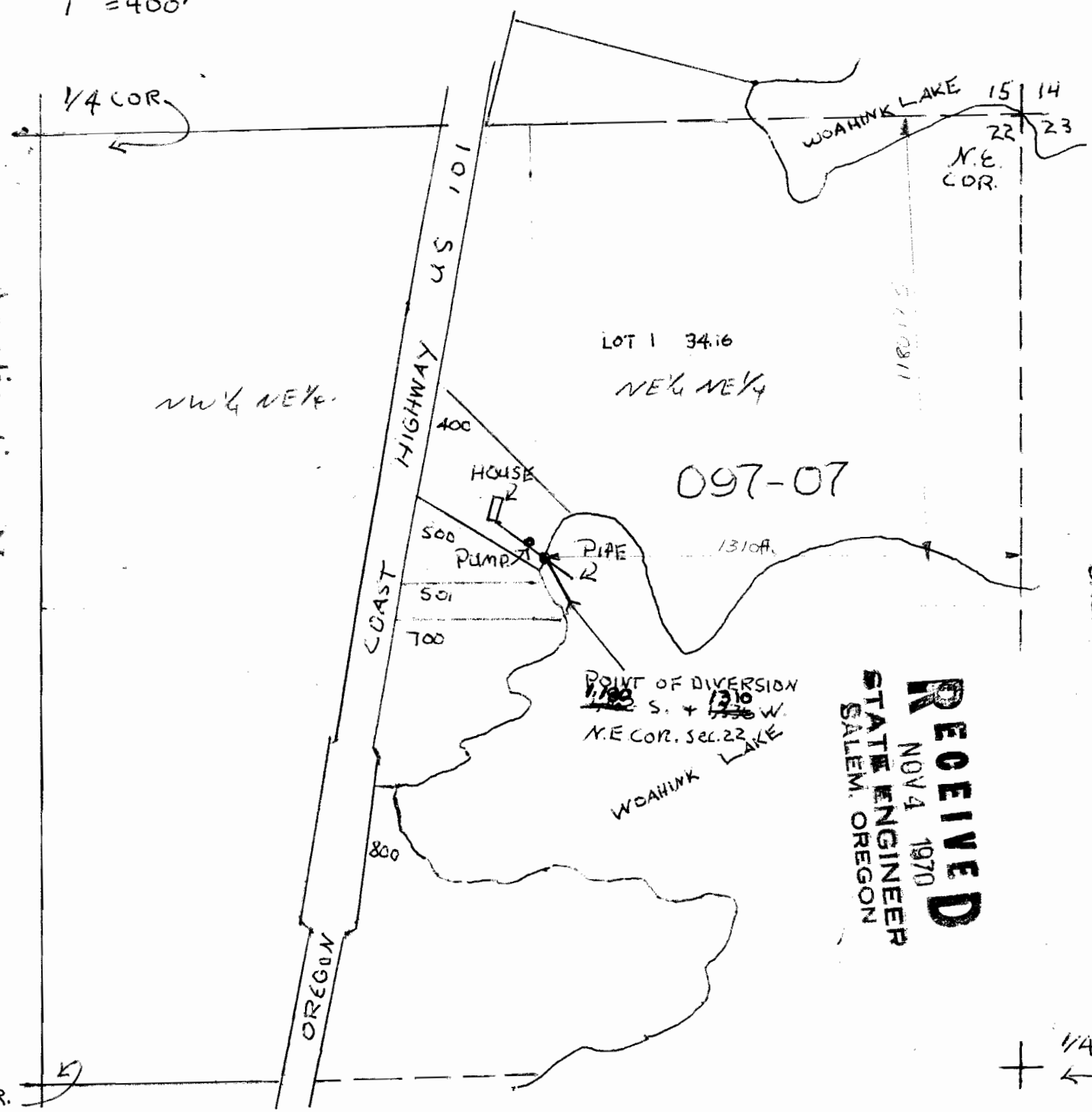


NE 1/4 Sec. 22 T. 19 S. R. 12 W. W.M.  
LAKE COUNTY

1" = 400'

Application No 47664  
Permit No. 35664



**RECEIVED**  
OCT 20 1970  
STATE ENGINEER  
SALEM, OREGON

**RECEIVED**  
NOV 4 1970  
STATE ENGINEER  
SALEM, OREGON

1/4 COR.  
+

Int.  
1/4 COR.