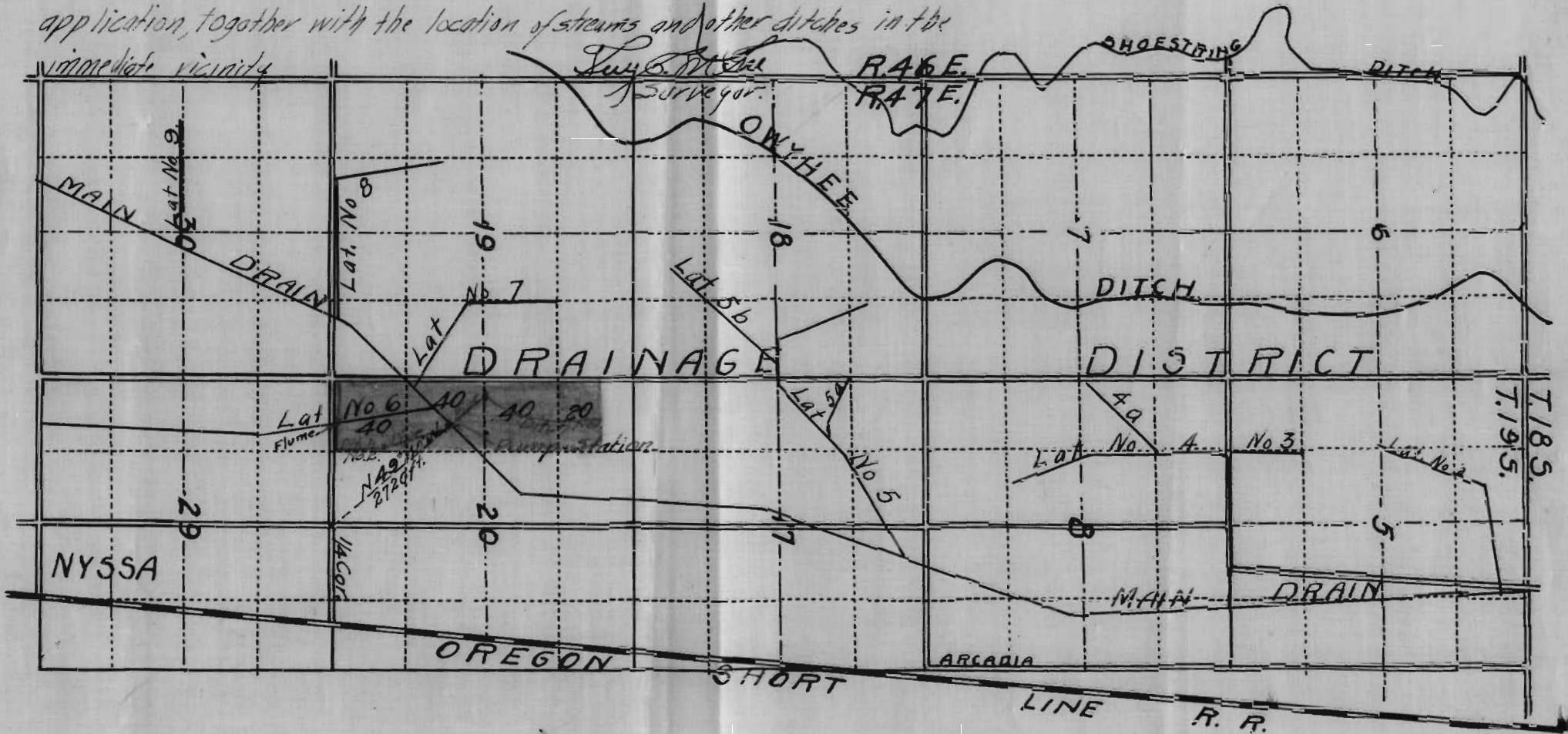


I, Guy C. McGee of Caldwell, Idaho do hereby certify that this map was made from notes taken during an actual survey, made by me on Feb. 14, 1917 and that it correctly represents the works described in the accompanying application, together with the location of streams and other ditches in the immediate vicinity

OFFICE OF STATE ENGINEER  
 RECEIVED  
 OCT 3 1917  
 SALEM, OREGON



Application No. 5772  
 Permit No. 3576

2115