

T. 29 S., R. 12 W. Coos Co. Ore.

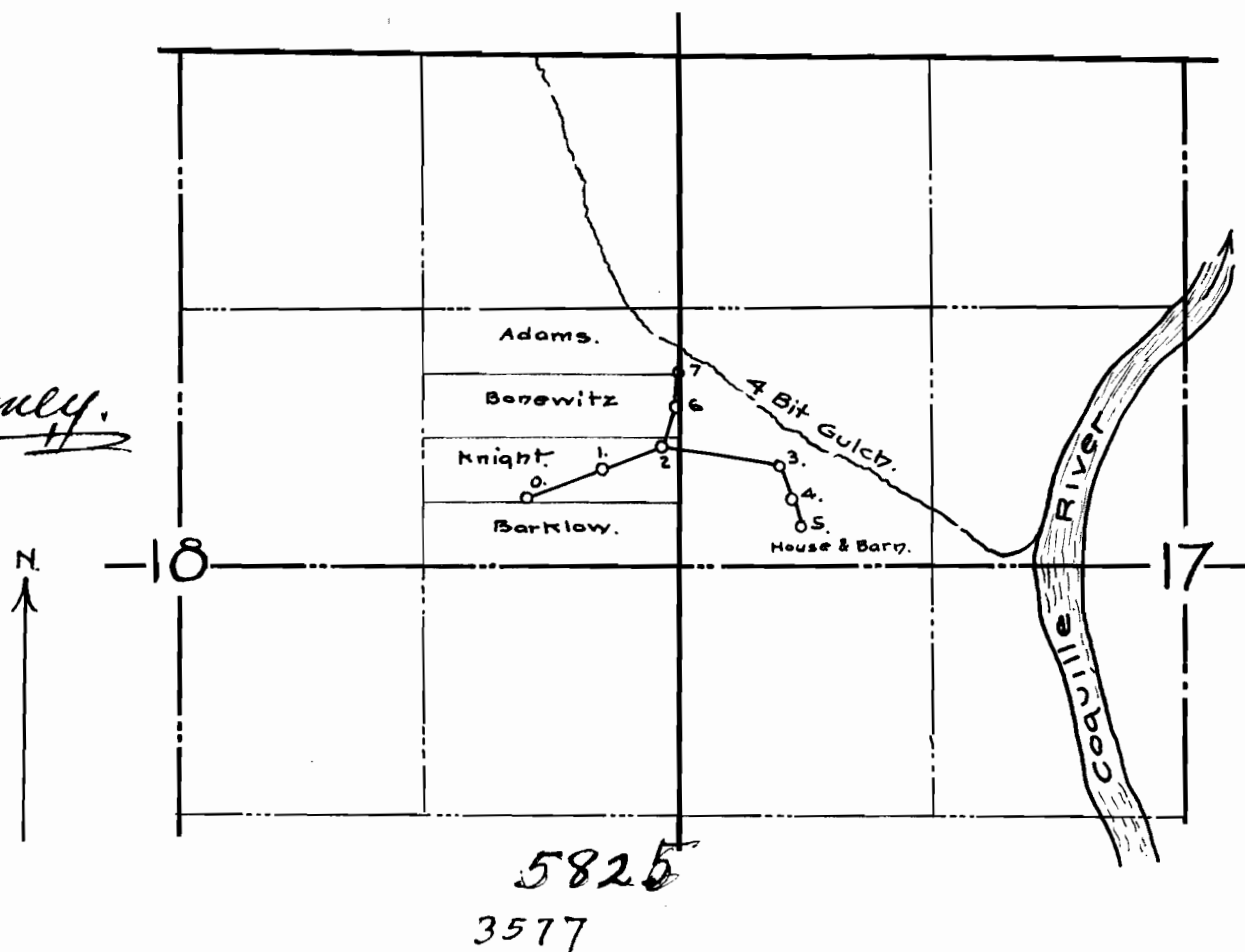
I, Geo. E. Tonney, of Myrtle Point, Oregon, do hereby certify that this map was made from notes taken during an actual survey made by me on October 31st, 1917, and that it correctly represents the works described in the accompanying application together with the location of streams and other ditches in the immediate vicinity.

Geo. E. Tonney
Surveyor.

Copy-Field notes

- Sta. 0 to 1 - N. 67° 30' E. - 500'
- 1 " 2 - N. 70° 10' E. - 320'
- 2 " 3 - S. 80° 30' E. - 630' } 1" Pipe line, 1778' long.
- 3 " 4 - S. 23° 55' E. - 178'
- 4 " 5 - S. 13° 30' E. - 150'
- 2 " 6 - N. 21° 44' E. - 220' } Tie.
- 6 " 7 - N. 5° 20' E. - 157'

- Sta. 0 = Spring - diversion
- Sta. 7 On Sec. line 330 ft ±
- S. of the N.E. 1/4, 1/4 Cor. of Sec. 18
- Sta. 5 = Place of use of water.



Map
Accompanying application for permit
to appropriate water.
For C. J. D. Ray.

Nov. 1st, 1917.

Scale, 1 in = 1000 ft.