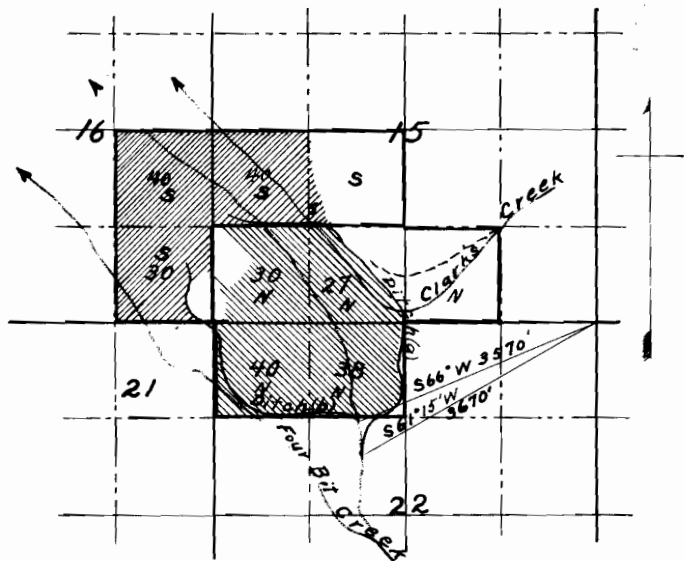


*Map Showing
Proposed Irrigation Ditches
of Gus Nichols and J.H. Stanley
in Twp. 35 S. R3 E. W.M.*



I, Ernest W. Smith, of Butte Falls, Oregon, do hereby certify that this map was made from notes taken during an actual survey made by me on Oct 29, 1917 and that it correctly represents the works described in the accompanying application, together with the location of streams and other ditches in the immediate vicinity.

Ernest W. Smith

5823^{Surveyor.}

3579