

Sec. 14 T19S R.12W.W.M.

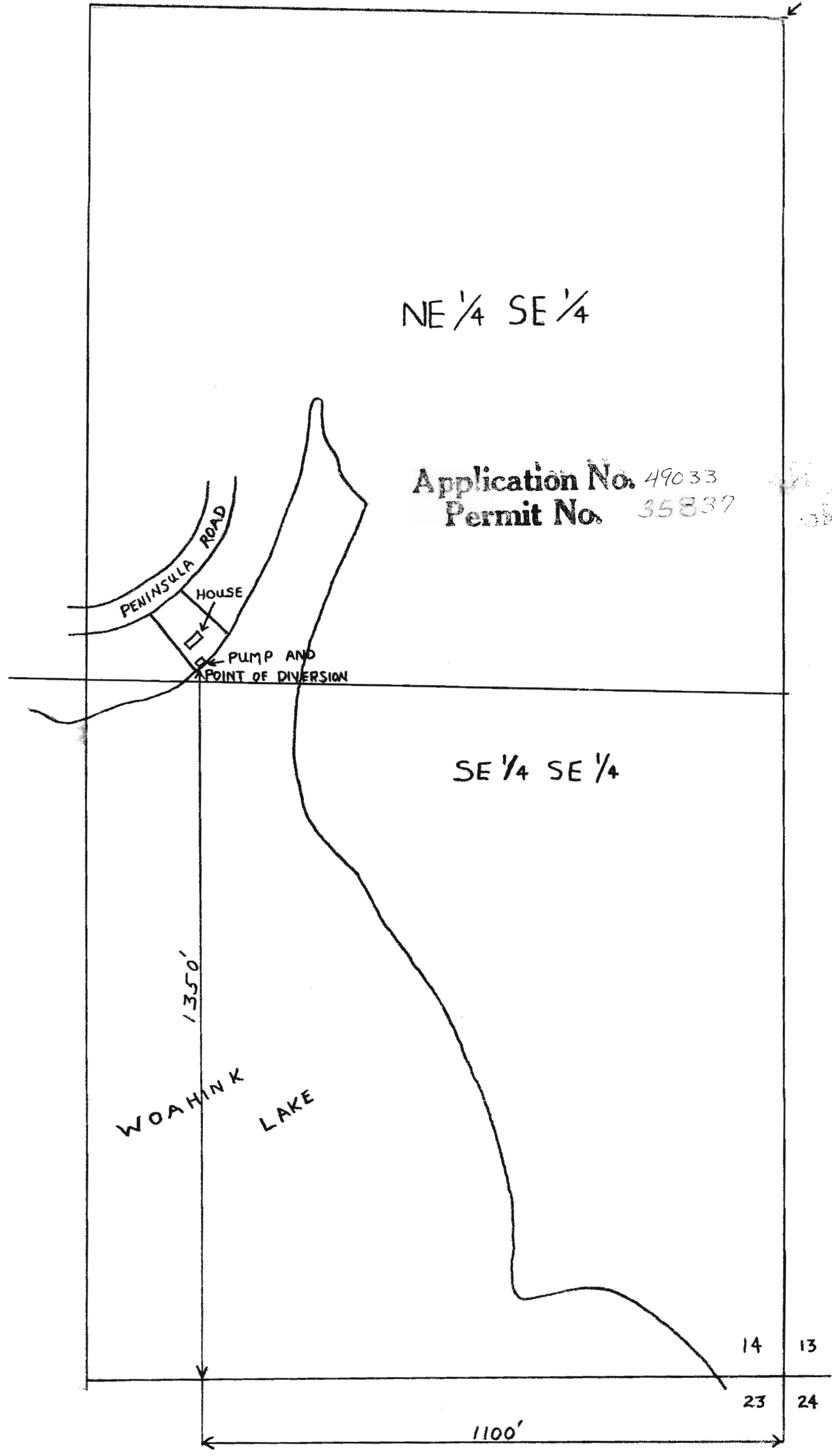
LANE COUNTY

1"=200'

RECORDED
APR 2 1972
STATE ENGINEER
SALEM, OREGON

NORTH ↑

1/4 COR.



NE 1/4 SE 1/4

Application No. 49033
Permit No. 35837

PENINSULA ROAD
HOUSE
PUMP AND POINT OF DIVERSION

SE 1/4 SE 1/4

1350'
WOA-HINK LAKE

1100'

14 13
23 24

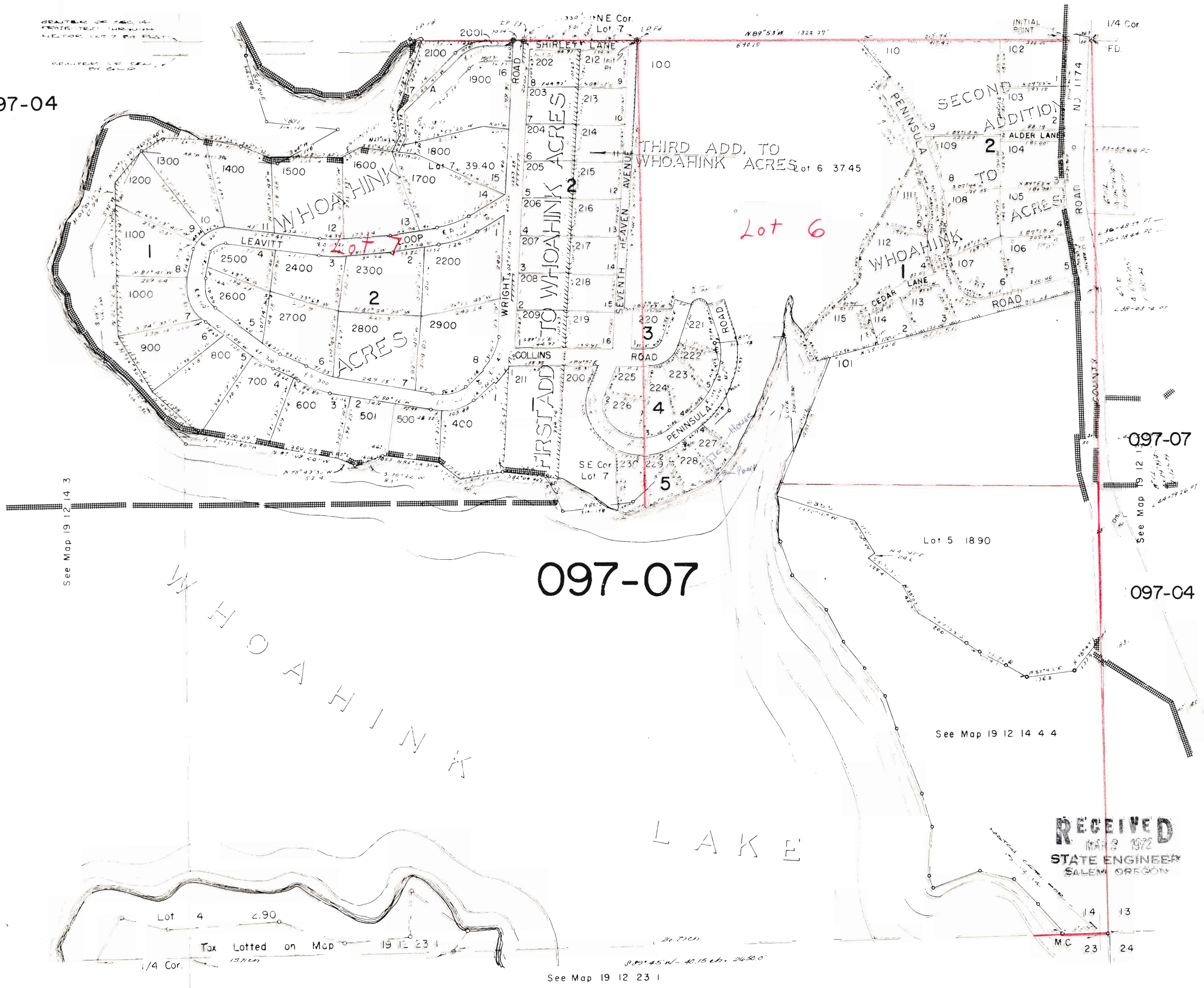
SE 1/4 Sec. 14 T19S. R. 12W.W.M.
LANE COUNTY

19 12 14 4
& INDEX

1" = 200'

See Map 19 12 14 1

097-04



See Map 19 12 14 3

097-07

097-07

097-04

See Map 19 12 14 4 4

RECEIVED
MAR 8 1972
STATE ENGINEER
SALEM OREGON

Application No. 49033
Permit No. 35837

See Map 19 12 23 1