

SECTION 24 T2S R3W W.M.

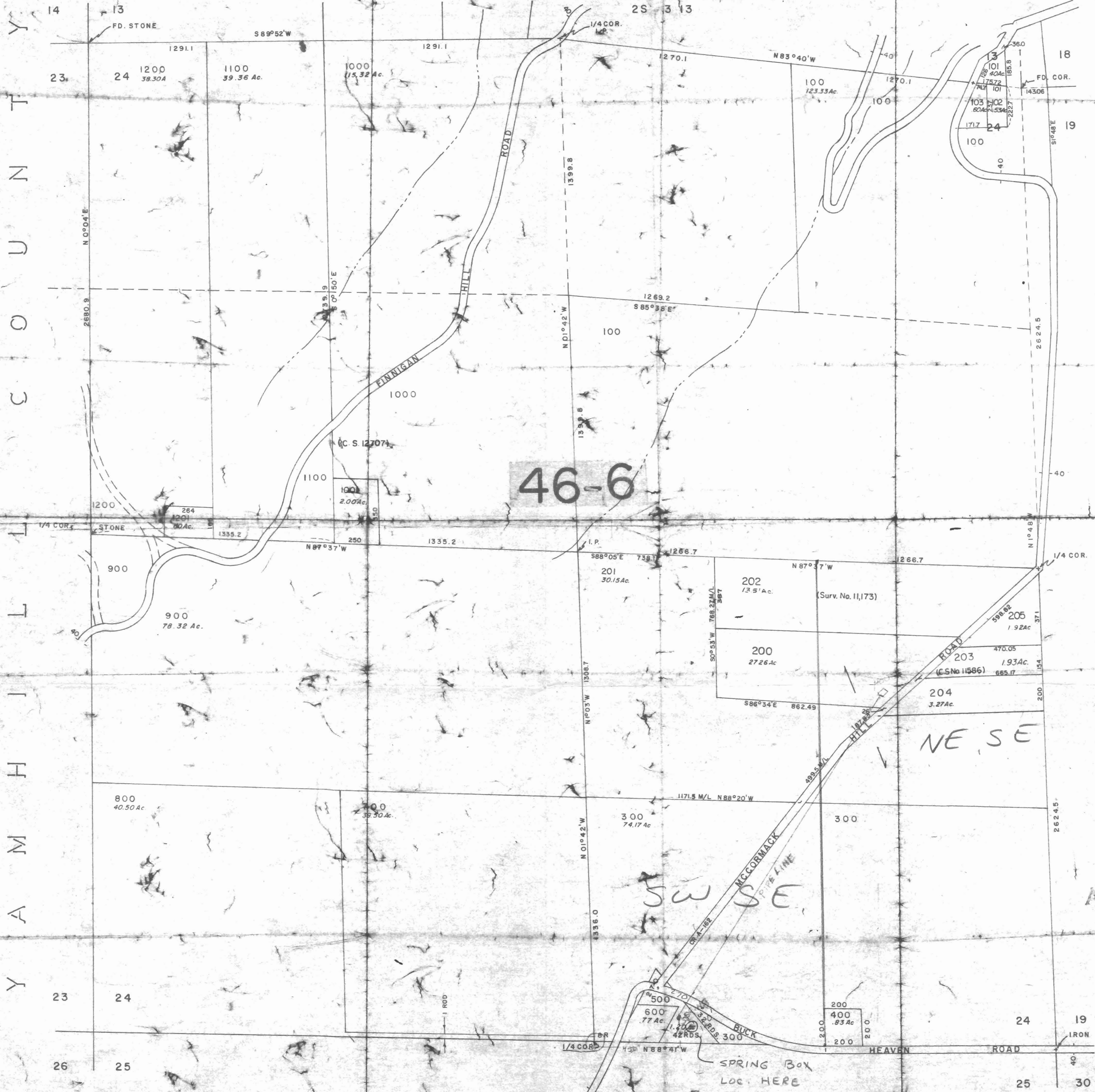
2 S 3 24

WASHINGTON COUNTY OREGON

SCALE 1"=400'

SEE MAP

2S 3 13



SEE MAP
2S 2 19

RECEIVED
JAN 29 1971
STATE ENGINEER
SALEM, OREGON

Application No. 47863
Permit No. 35870

WASHINGTON COUNTY

DEC 31 1970

2S 3 24