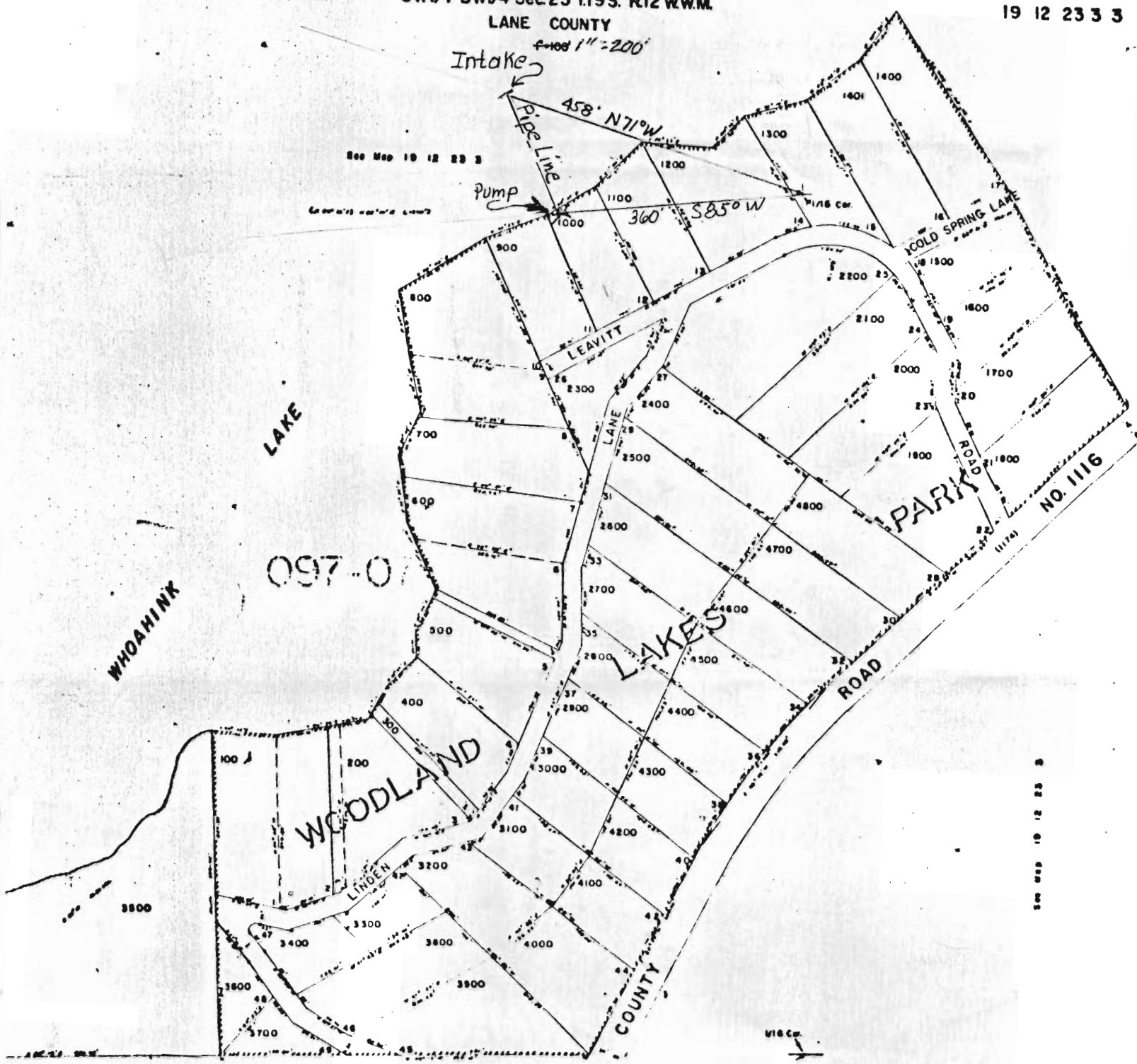


Application No. 48970  
Permit No. 35970

RECEIVED  
FEB 1 1972  
STATE ENGINEER  
SALEM, OREGON

SW1/4 SW1/4 Sec. 23 T.19S. R.12 W.W.M.  
LANE COUNTY

19 12 23 3



LAKE

097-01

WHOAHINK

WOODLAND

LAKES

PARK

COUNTY

See Map 19 12 23 3

See Map 19 12 23 3

Application No. 48970  
Permit No. 35970

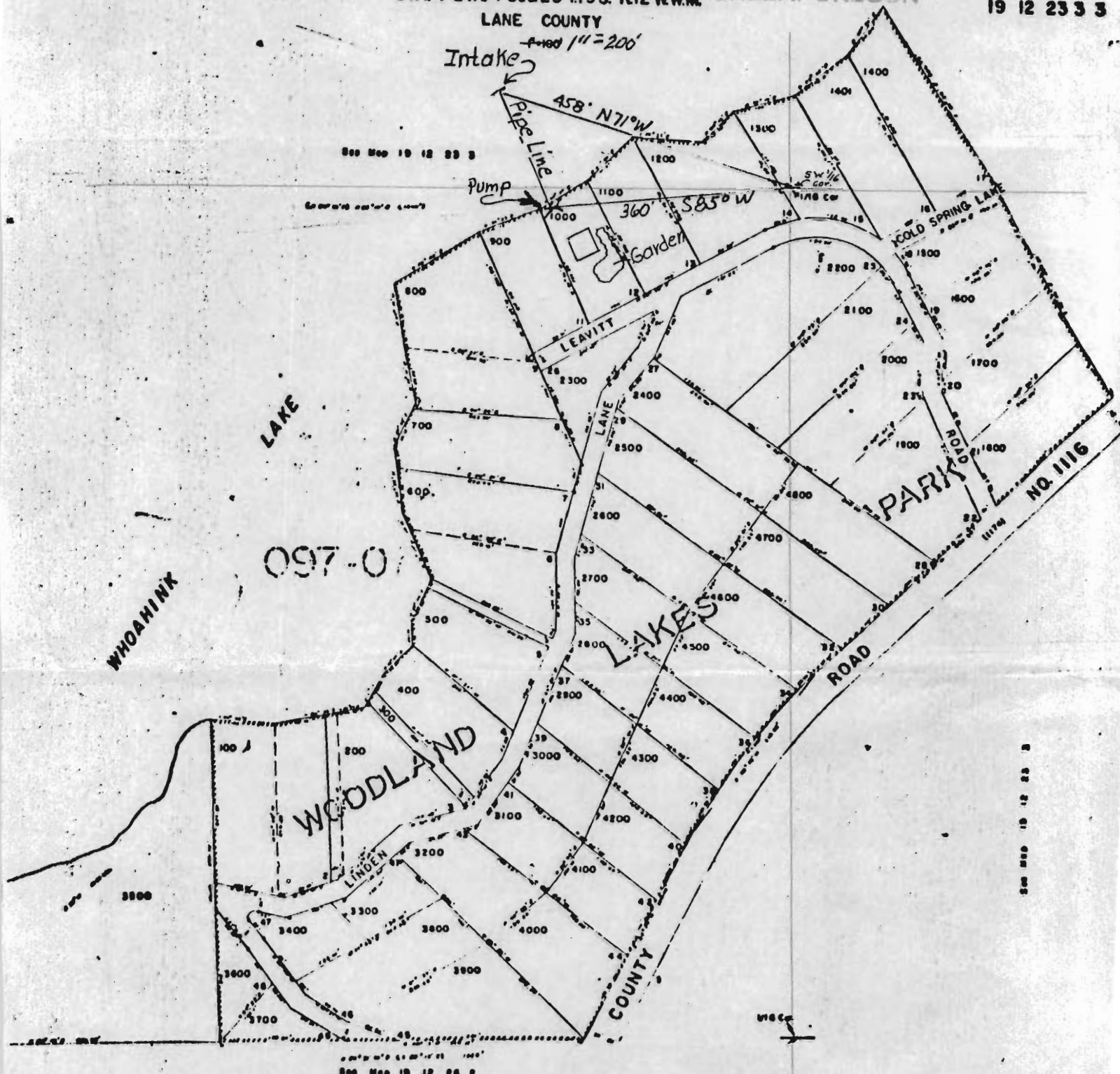
RECEIVED  
FEB 1 1972  
STATE ENGINEER  
SALEM, OREGON

RECEIVED  
MAR 2 1972

STATE ENGINEER  
SALEM, OREGON

19 12 23 3 3

SW1/4 SW1/4 Sec 23 T19S. R12 WWM.  
LANE COUNTY



See Map 19 12 23 3

See Map 19 12 23 3

LAKE

097-0

WHOAHINK

WOODLAND

LAKES

PARK

ROAD

COUNTY

See Map 19 12 23 3

See Map 19 12 23 3