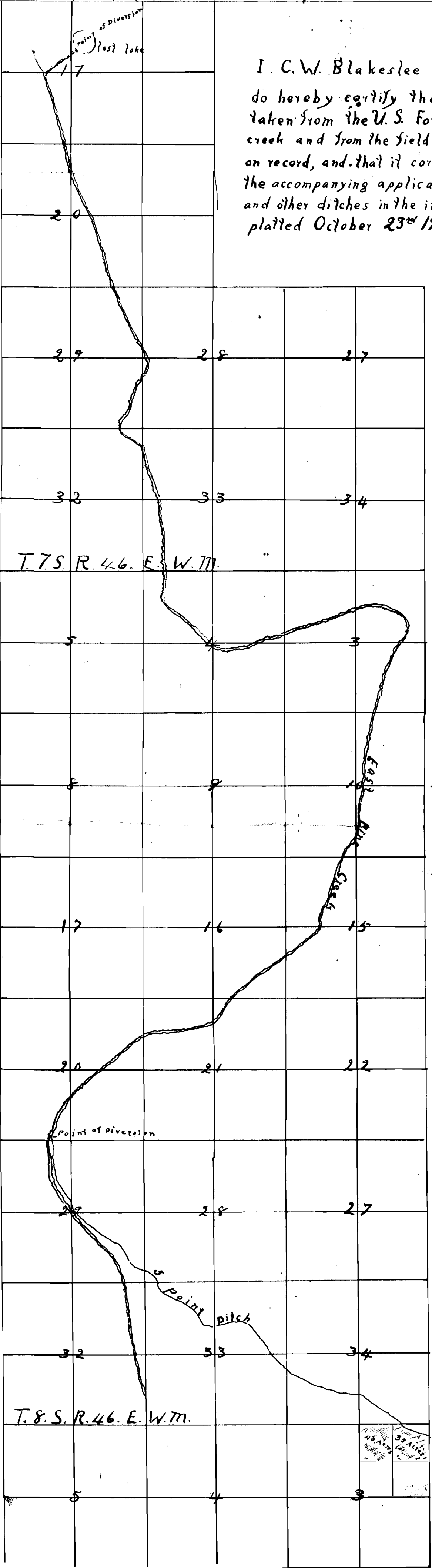
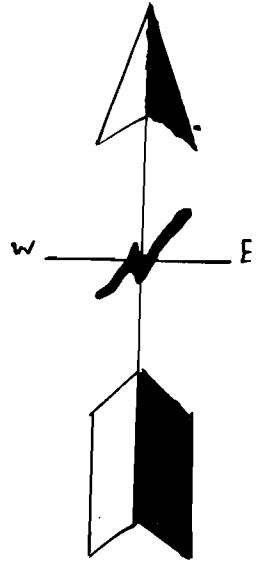


T. 6. S. R. 46. E. W. 7. M.

I. C. W. Blakeslee of Copperfield Oregon
do hereby certify that this map was made from notes
taken from the U. S. Forest Service plat showing East Pine
creek and from the field notes and plat of the s point ditch now
on record, and that it correctly represents the works described in
the accompanying application together with the location of streams
and other ditches in the immediate vicinity.
platted October 23rd 1917.

C. W. Blakeslee
Surveyor



5778
3609

2572