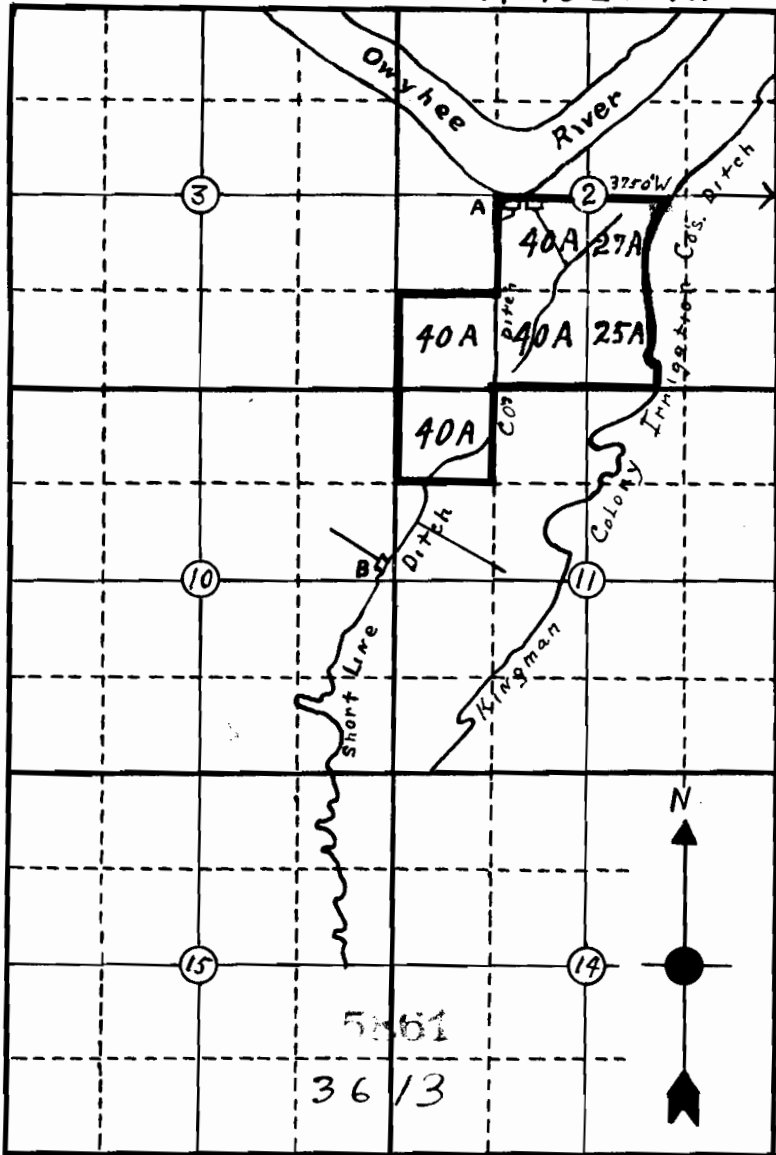


T 21 S

R 46 E.W.M.



I, H.R. OTIS of Nyssa, Ore., do hereby certify that this map was made by me on the 15th day of November 1917, and that it correctly represents the works described in the accompanying application, together with the location of streams and other ditches in the immediate vicinity, and has written thereon the area in each smallest legal subdivision which it is proposed to irrigate.

H. R. Otis,  
Surveyor