

MAP SHOWING DIVERSION OF CREEK WATER
TO HUGHES' AND LENERVILLE'S HOUSES
SECTION 31, T. 24 S., R. 11 W., W.M.

SURVEY AND MAP BY: BARRAT G. SCOTT, L.S. No. 908
SCALE: 1" = 500' SEPT. 1972

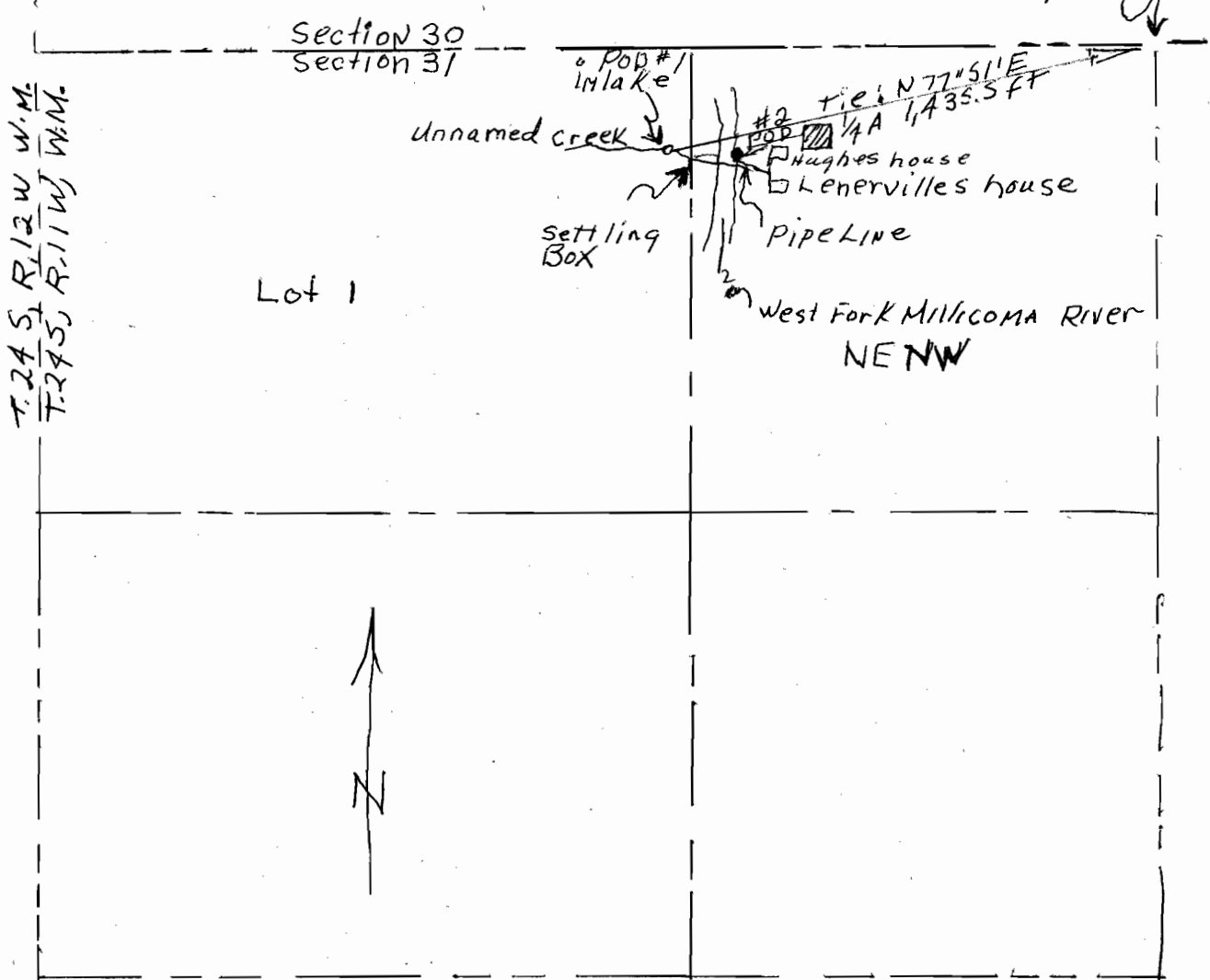
POD #1 Located 302.2' S. and 1403.3' W. from the S 1/4
corner of Sec. 30

POD #2 Located 310' S. and 1195' W from the S 1/4
corner of Sec. 30

RECEIVED

9 1972

STATE ENGINEER
SALEM OREGON



Application No. 49793
Permit No. 36163