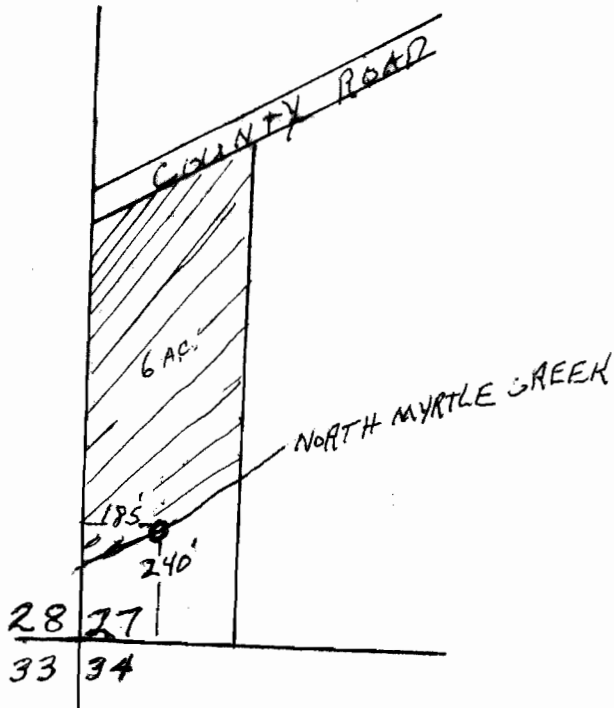


**RECEIVED**  
AUG 19 1971  
STATE ENGINEER  
SALEM, OREGON

**RECEIVED**  
JUL 22 1971  
STATE ENGINEER  
SALEM OREGON

Scale 1" = 400'  
T. 28 S., R. 4 W., M.  
Section 27



**Application No.** 48470  
**Permit No.** 36378