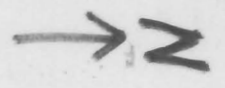


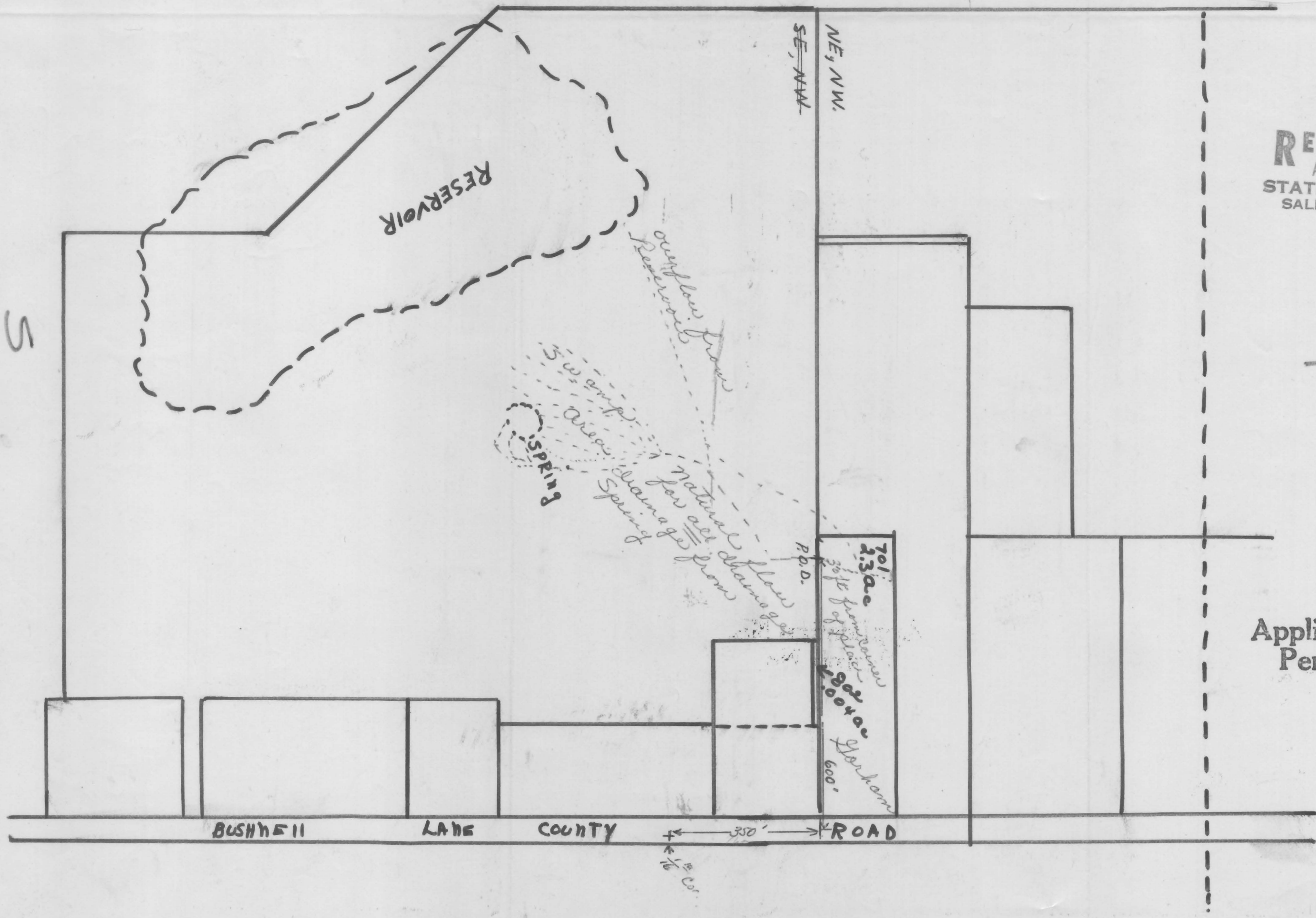
E 1/2, NW 1/4 SEC 17 T3S R38E WM

RECEIVED
AUG 19 1971
STATE ENGINEER
SALEM, OREGON

Scale 1" = 200'



Application No. 48597
Permit No. 36460



BUSHNELL

LANE

COUNTY

ROAD

350'

5

SE, SW.

NE, NW.

1/16" Cor.