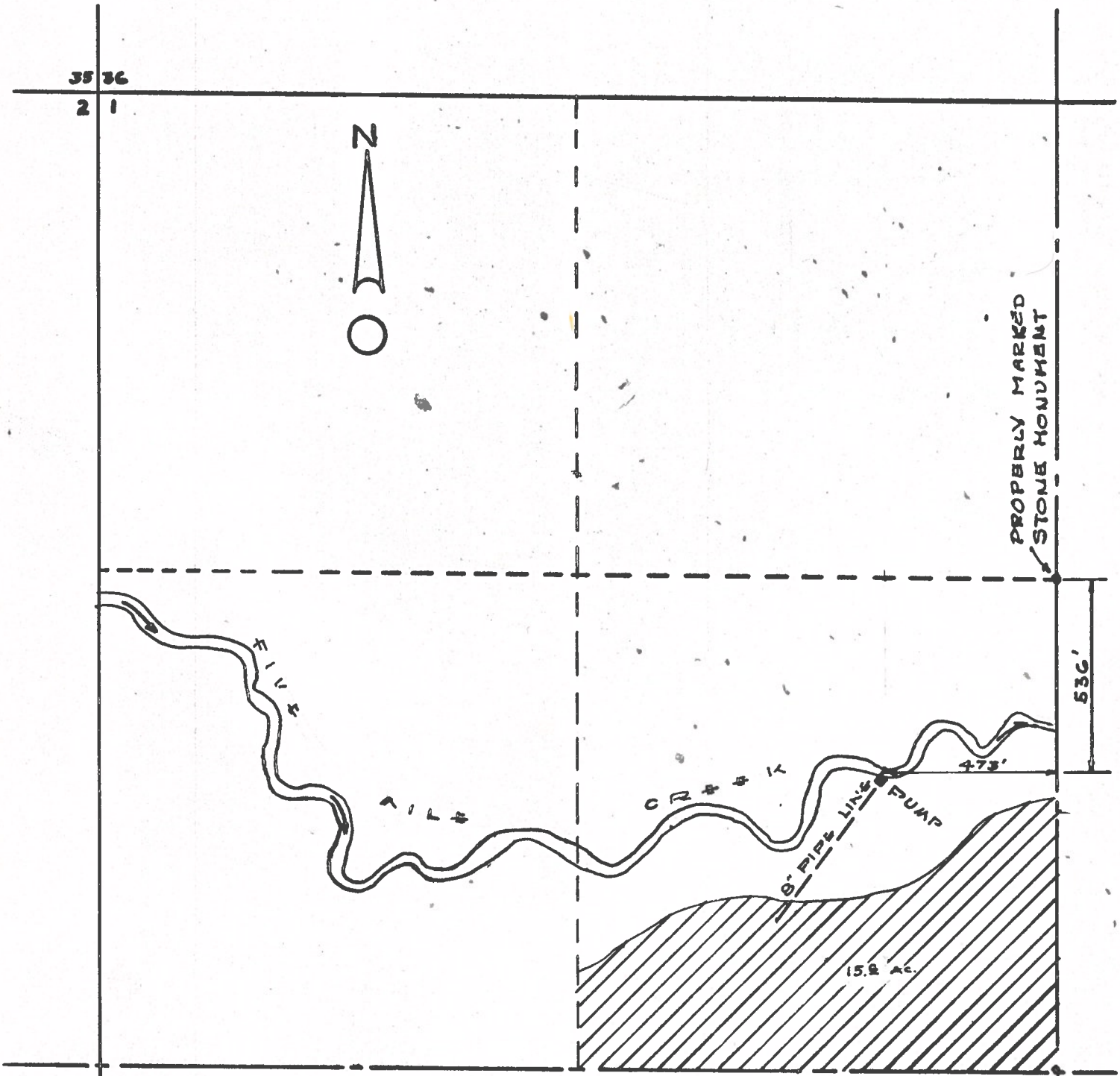


FC

RECEIVED  
DEC 6 1971  
STATE ENGINEER  
SALEM, OREGON



N.W. 1/4 SECTION 1  
T36S, R13E, WA

Application No. 48883  
Permit No. 36624



MAP SHOWING  
LAND TO BE IRRIGATED  
BY  
**HEATON STEEL & SUPPLY INC.**

SECTION 1 T36S, R13E WA  
SCALE: 1" = 400'  
MAP PREPARED BY WILLIAM L WALES  
DRAWN BY: WRR. CIVIL ENGINEER  
OCTOBER, 1971 KLAMATH FALLS, ORE.