

T. 13 S., R. 31 E. W.M.

PROPHET ADDITION

CANYON CITY

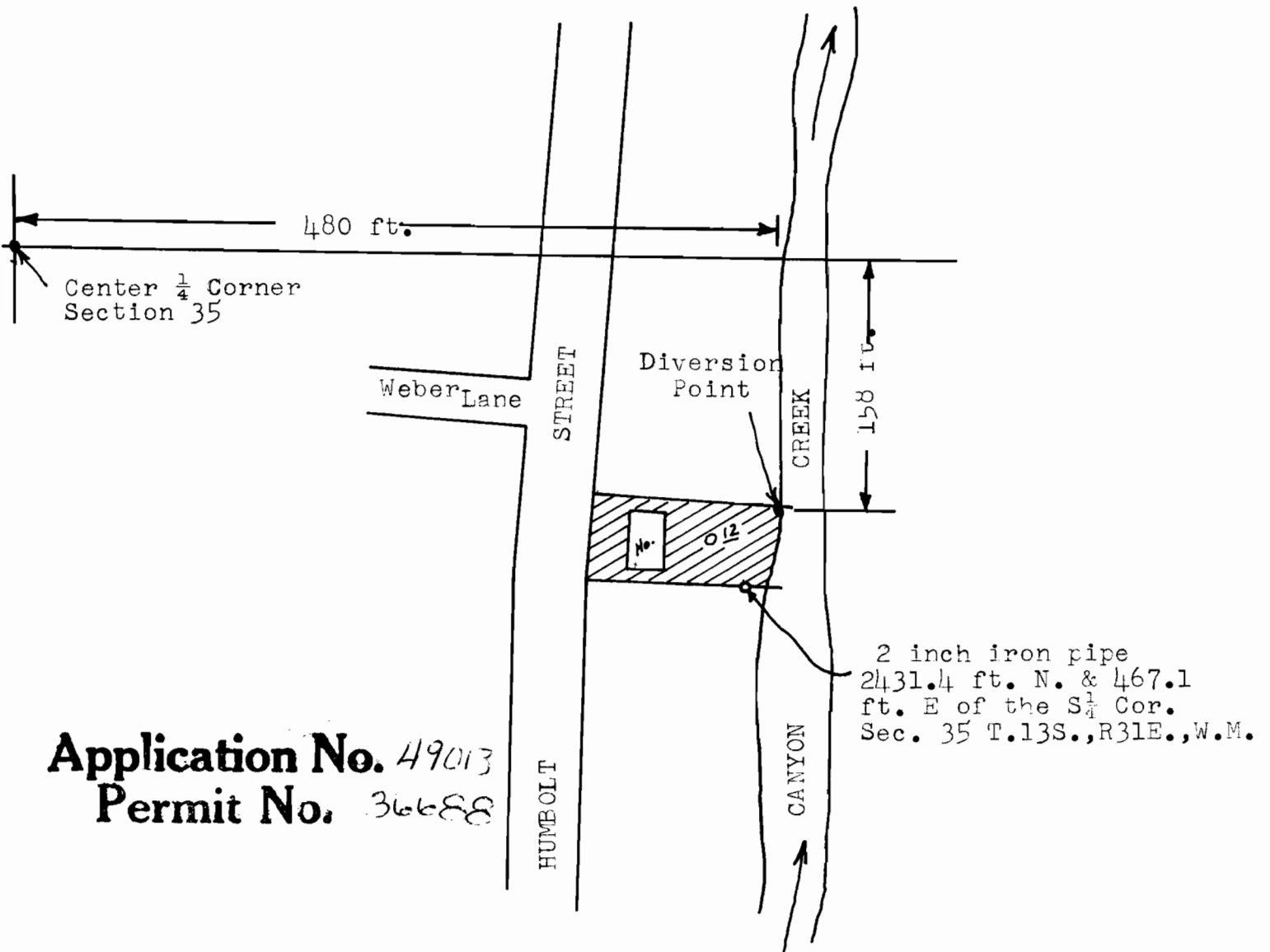
GRANT COUNTY, OREGON

SCALE: 1 inch equals 100 ft.

RECEIVED  
JUN 24 1912  
STATE ENGINEER  
SALEM OREGON

Map approved by:

*Ernest H. ...*



Application No. 49013  
Permit No. 36688