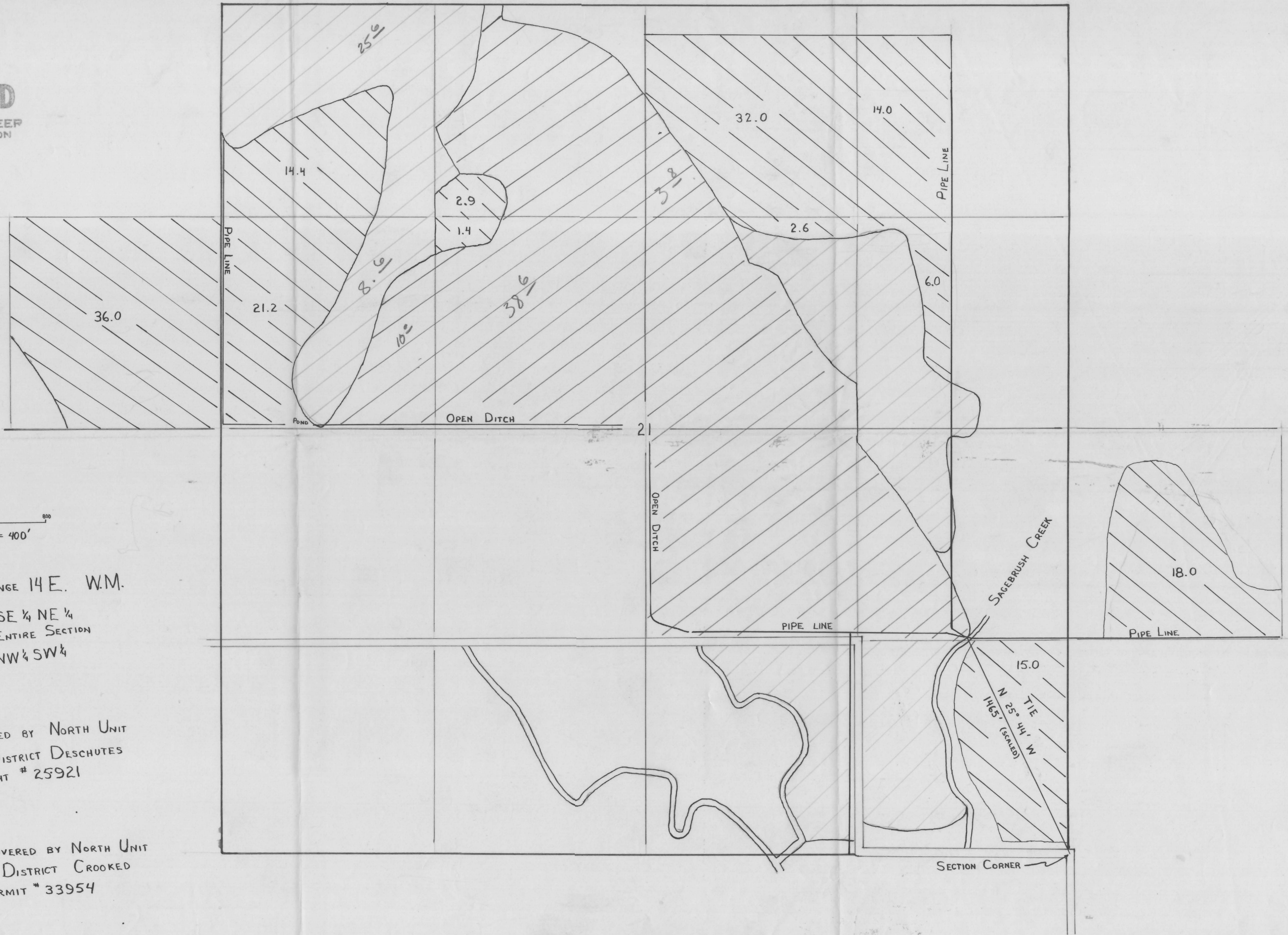
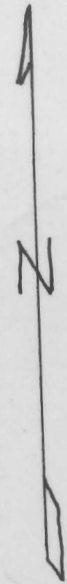


RECEIVED
JUN 20 1972
STATE ENGINEER
SALEM OREGON



SHEET 1 OF 2

SCALE: 1" = 400'

TOWNSHIP 9S. RANGE 14E. W.M.

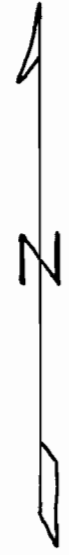
SECTION 20 - SE 1/4 NE 1/4
SECTION 21 - ENTIRE SECTION
SECTION 22 - NW 1/4 SW 1/4

LANDS COVERED BY NORTH UNIT
IRRIGATION DISTRICT DESCHUTES
WATER RIGHT # 25921

LANDS COVERED BY NORTH UNIT
IRRIGATION DISTRICT CROOKED
RIVER PERMIT # 33954

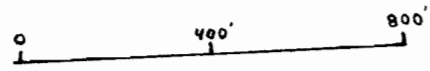
LANDS COVERED BY PERMIT
REQUESTED FROM SAGEBRUSH
CREEK

Application No. 49366
Permit No. 36704



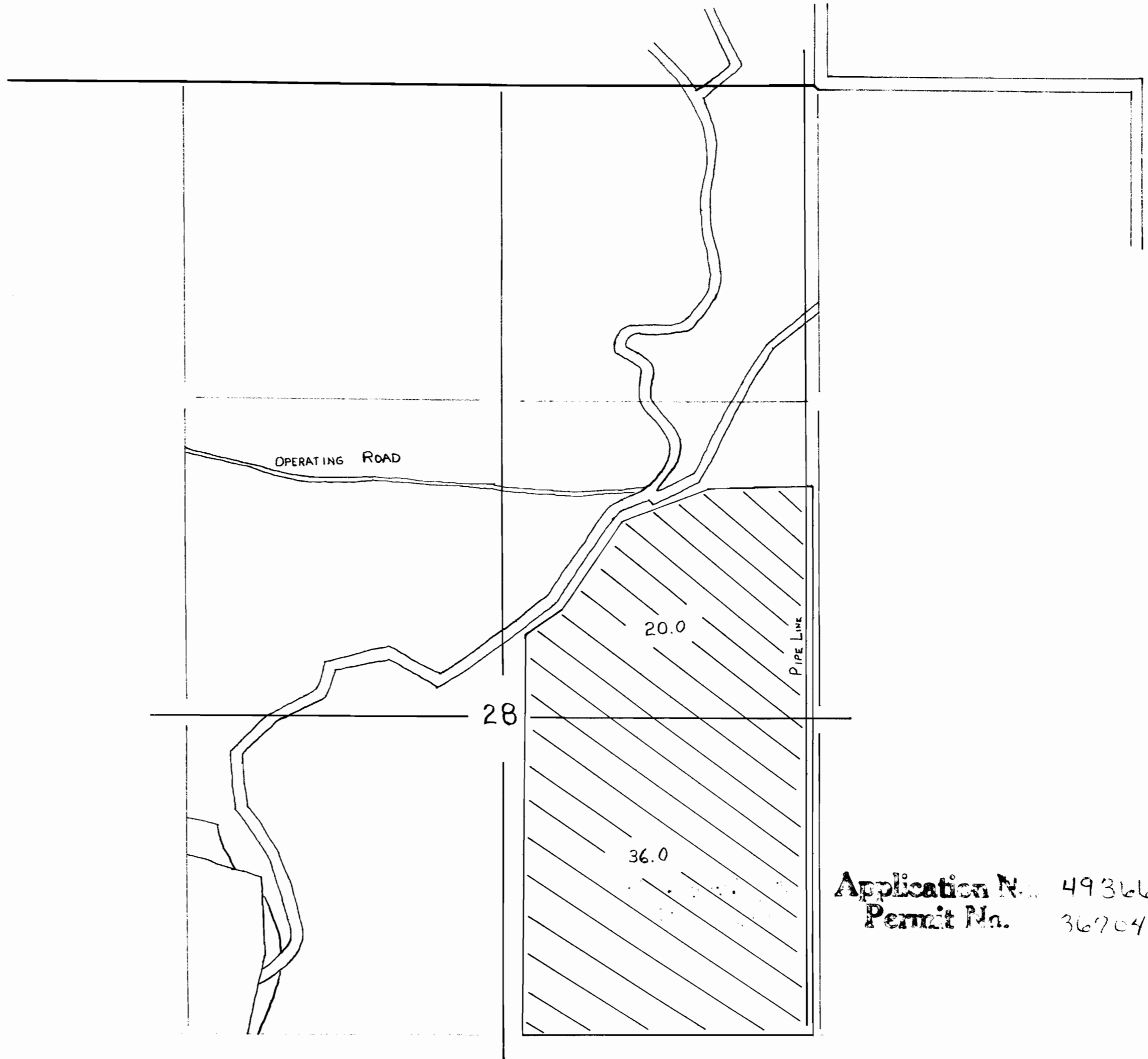
Oil & Gas
Lease

SHEET 2 OF 2



SCALE: 1" = 400'

TOWNSHIP 9S RANGE 14E. W.M.
SECTION 28



Application No. 49366
Permit No. 36704