

42-A

RECEIVED
STATE ENGINEER
SALEM, OREGON

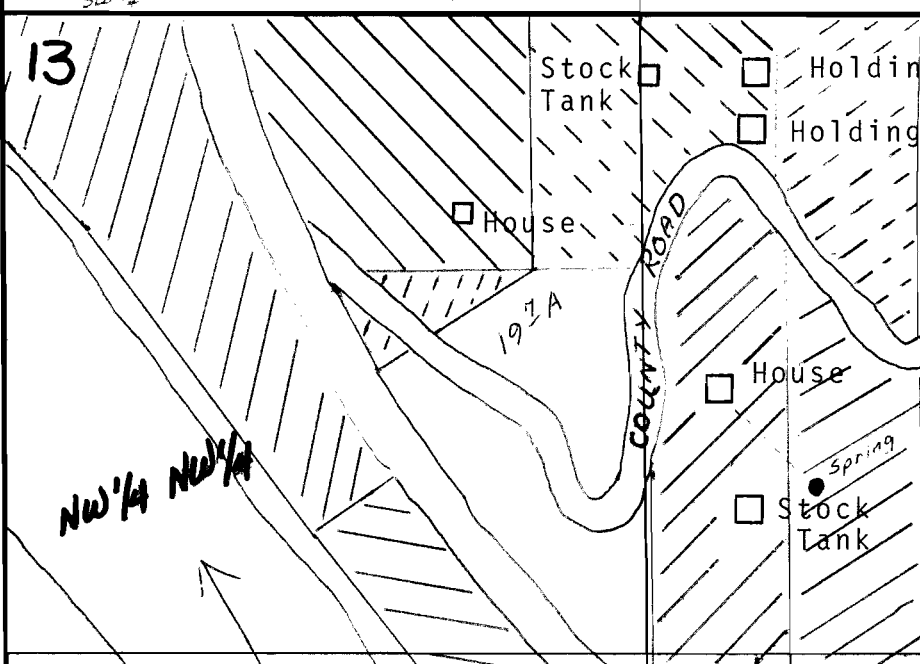
Township 24 South, Range 7 West, Section 12

1360' E
838' N.

SE 1/4 SW 1/4

RECEIVED
STATE ENGINEER
SALEM, OREGON

11 12
14 13



NW 1/4 NW 1/4

NE 1/4 NW 1/4

POD #2 - 990 feet South and 1700 feet East from SW Corner Section 12, T.24S., R.7W.

RECEIVED
STATE ENGINEER
SALEM, OREGON
T.24S. R.7W., Sec. 13

SW 1/4 NW 1/4

SE 1/4 NW 1/4

RECEIVED
STATE ENGINEER
SALEM, OREGON

Application No. 49849
Permit No. 36712

Scale 1" = 400'