

T 8 S, R 42 E, W.M., ORE.

15

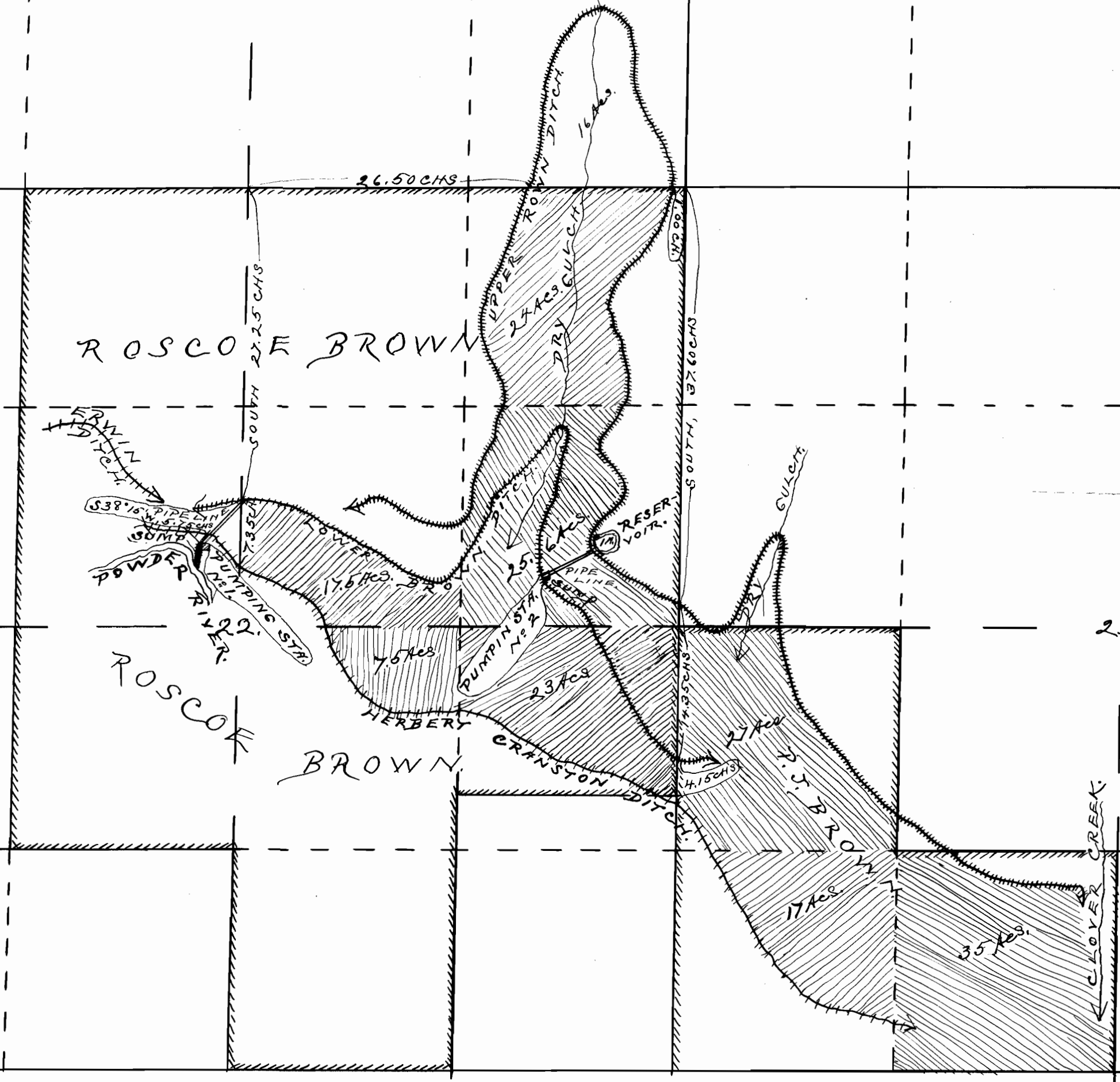
14



### SKETCH SHOWING

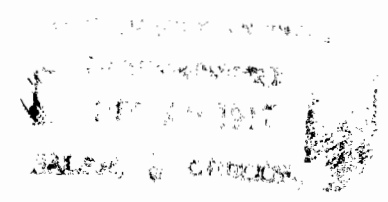
THE LOCATION OF THE LANDS TO IRRIGATED BY THE BROWN PUMPING PLANTS & DITCHES IN SECS. 22 & 23, T 8 S, R 42 E, W.M., BAKER CO., ORE.  
SCALE, ONE INCH = 10.00 CHS.  
SURVEYED NOV. 13 + 14, 1917.

*Ira L. Hoffman,  
County Surveyor.*



**CERTIFICATE OF SURVEYOR.**  
I, IRA L. HOFFMAN OF BAKER, ORE., DO HEREBY CERTIFY THAT THIS MAP WAS MADE FROM NOTES TAKEN DURING AN ACTUAL SURVEY MADE BY ME ON NOV. 13 + 14, 1917, AND THAT IT CORRECTLY REPRESENTS THE DATA SHOWN THEREON, TOGETHER WITH THE LOCATION OF STREAMS AND OTHER DITCHES IN THE IMMEDIATE VICINITY.

*Ira L. Hoffman,  
County Surveyor.*



5901  
3671

5902  
3647