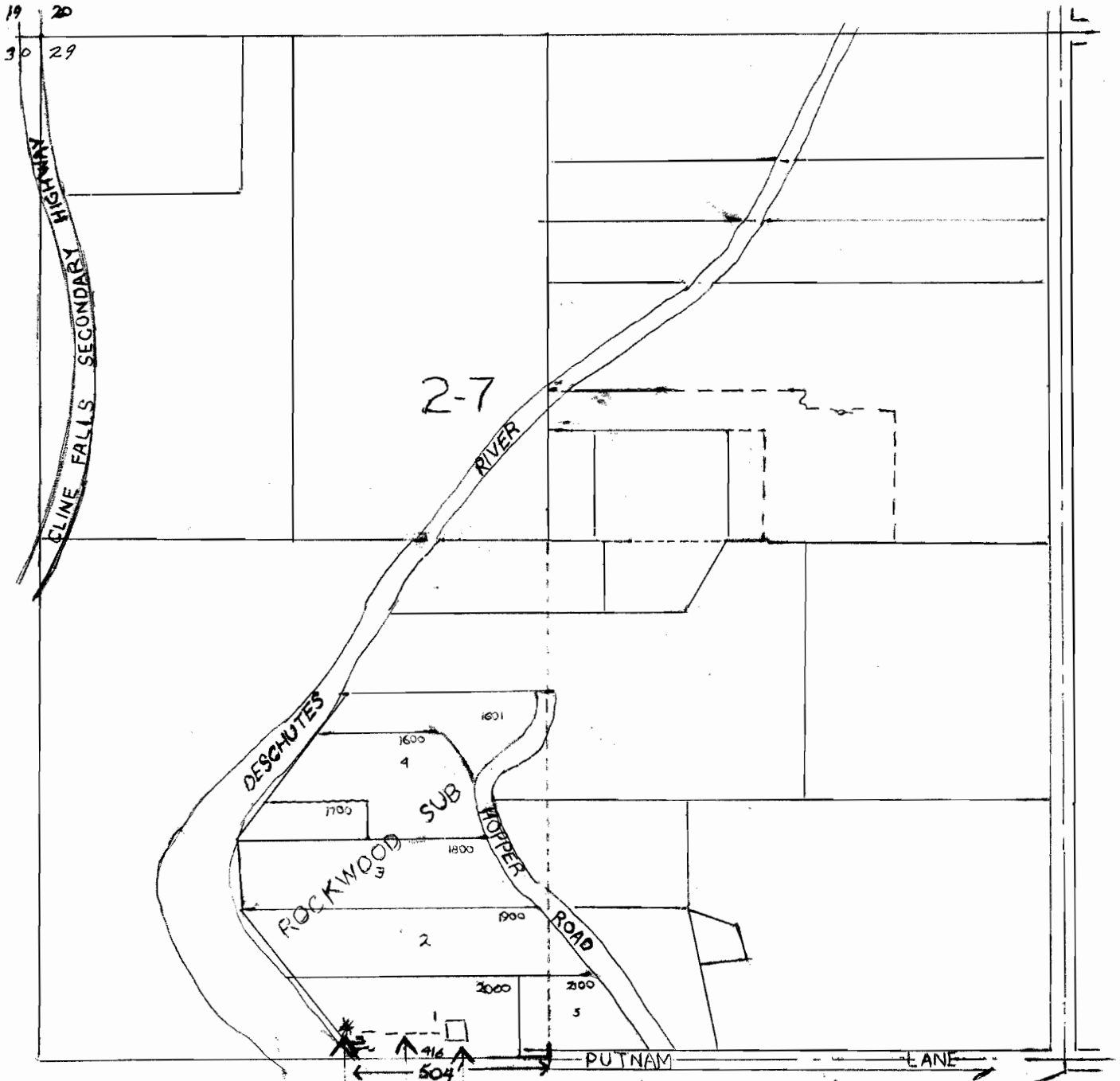


**RECEIVED**  
MAY 15 1973  
STATE ENGINEER  
SALEM, OREGON

NW 1/4 SEC. 29 T.16S. R.12E.W.M.  
DESCHUTES COUNTY  
1" 400'

16 12 298

**RECEIVED**  
STATE ENGINEER  
SALEM, OREGON



PUMP

PIPE

HOUSE

Application No. 50316

Permit No. 36743