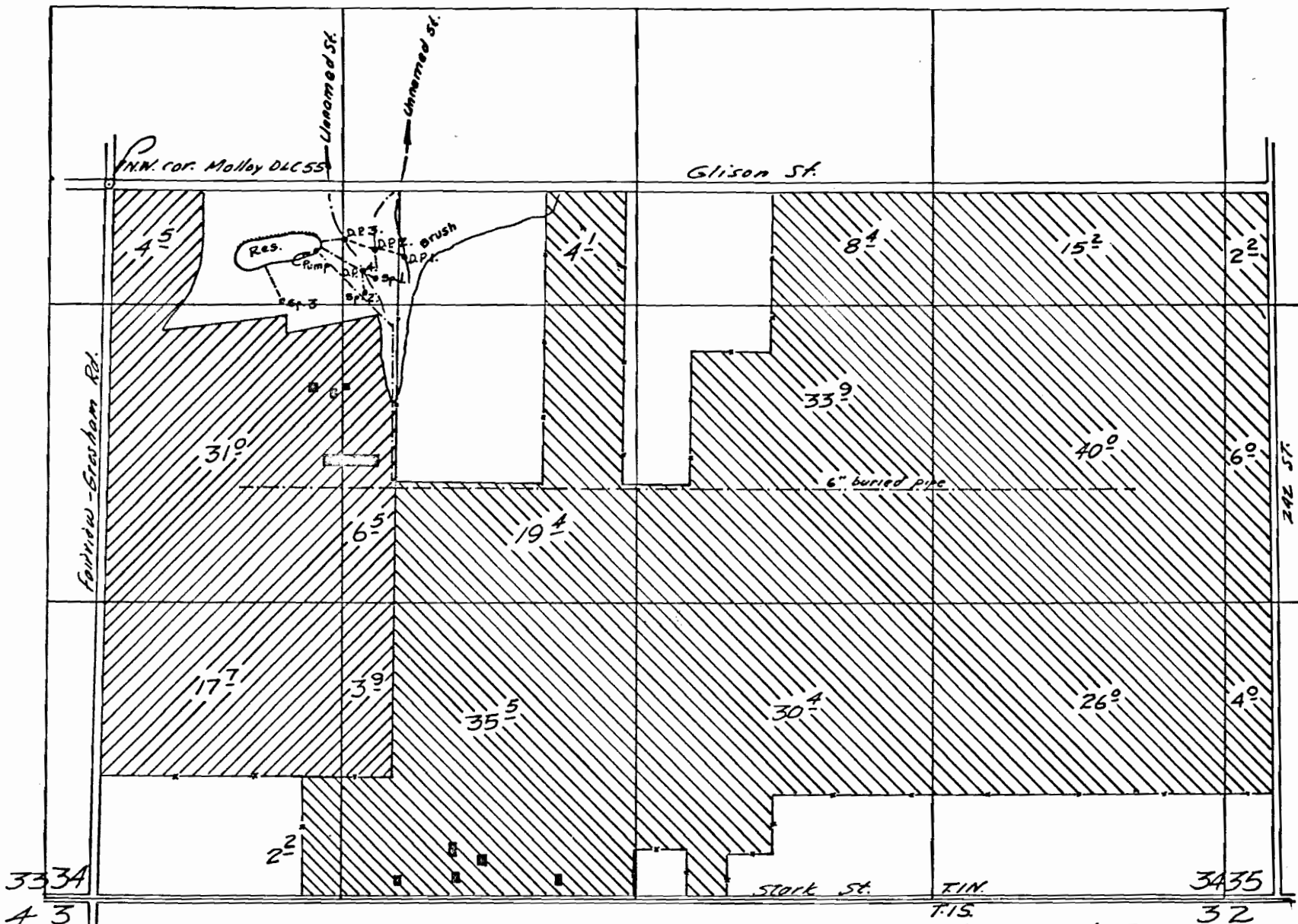


T. 1 N. R. 3 E. W.M.

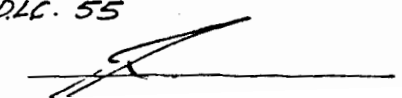


 primary  
 supplemental

Springs located:- #1-410 ft.S. & 1210 ft.E., #2-470 ft.S. & 1160 ft.E., #3-500 ft.S. & 790 ft.E.  
 Div. Pts located:- #1-320 ft.S. & 1330 ft.E., #2-280 ft.S. & 1200 ft.E.  
 #3-240 ft.S. & 1060 ft.E. #4-370 ft.S. & 1150 ft.E.  
 Res. located:- 300 ft.S. & 940 ft.E; all from the N.W. corner of Molloy D.L.C. 55

Scale 1" = 660'

approved by



Application No. 50021 & R-50607 & 50608  
 Pennil No. 36765 & R-5964 & 36772

RECEIVED  
 JUN 10 1908  
 STATE OF PENNSYLVANIA  
 DEPARTMENT OF REVENUE