

RECEIVED

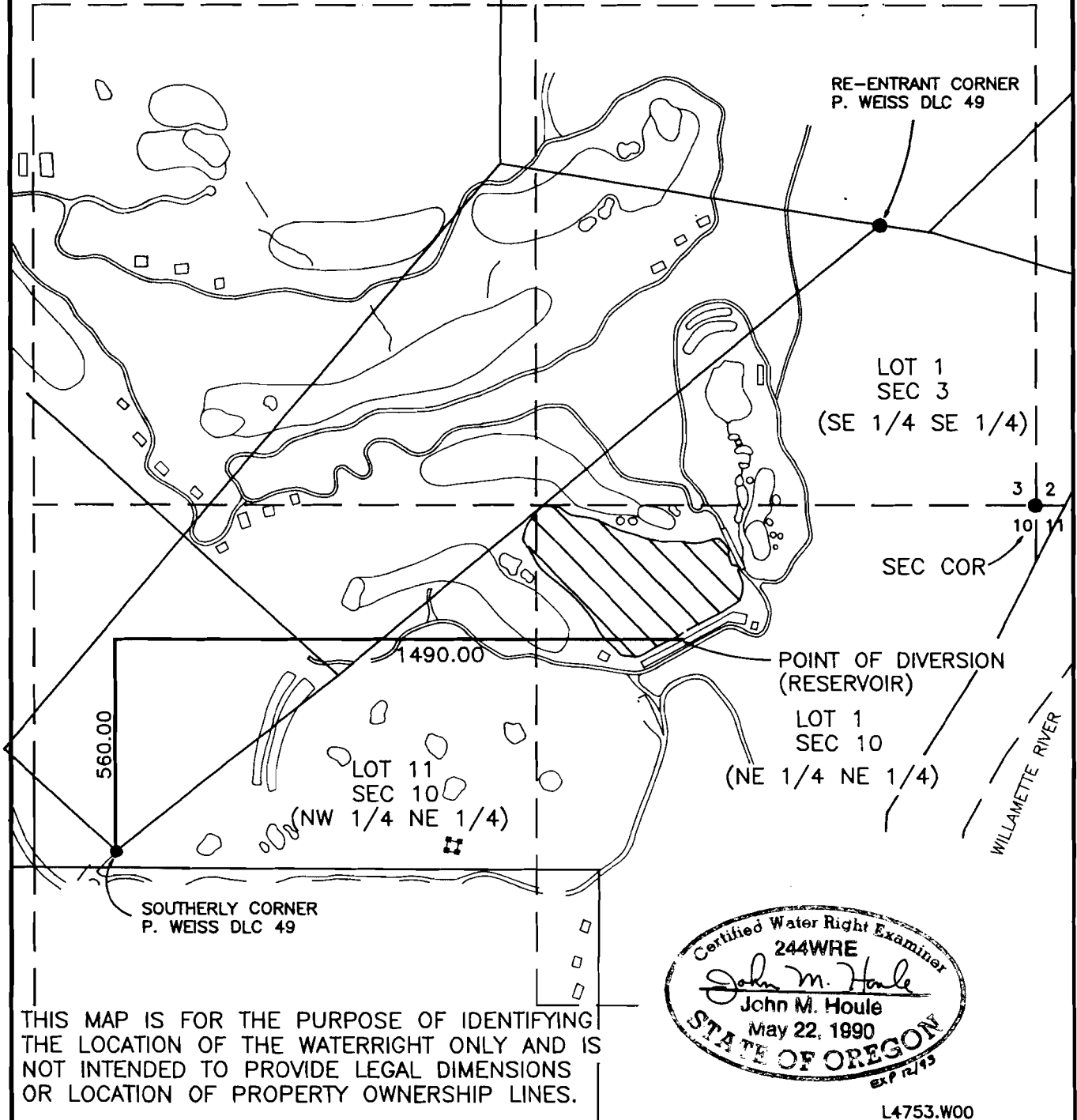
SEP 30 1993

WATER RESOURCES DEPT
SALEM, OREGON

AREA OF BENEFICIAL USE
LOCATED IN T.3S., R.1E., W.M.
CLACKAMAS COUNTY, OREGON
SW 1/4 OF SE 1/4 SEC. 3 (LOT 1)
NE 1/4 OF NE 1/4 SEC 10 (LOT 1)
NW 1/4 OF NE 1/4 SEC 10 (LOT-11)



SCALE 1" = 400'



FINAL PROOF SURVEY
UNDER APPLICATION T-6444

APPLICANT: DALOH INTERNATIONAL, USA CORP.
320 S.W. ~~TAKE~~, SUITE 600
PORTLAND, OR 97204
(503) 294-2008

otak
Incorporated

surveyors
engineers
planners

17355 S.W. BOONES FERRY ROAD
LAKE OSWEGO, OREGON 97035
(503)635-3618 FAX (503)635-5395