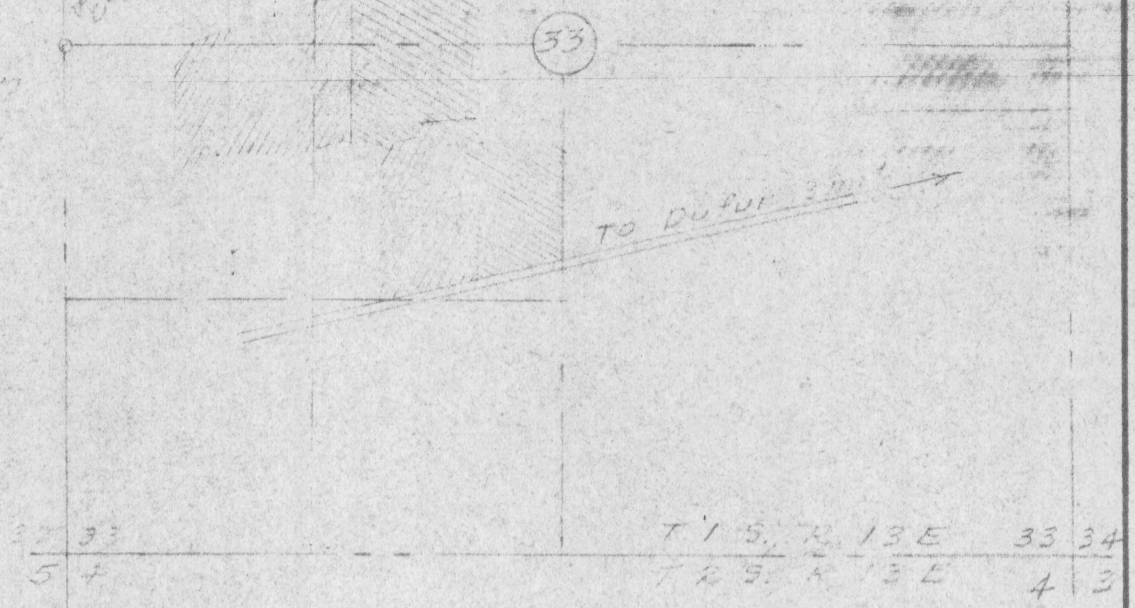
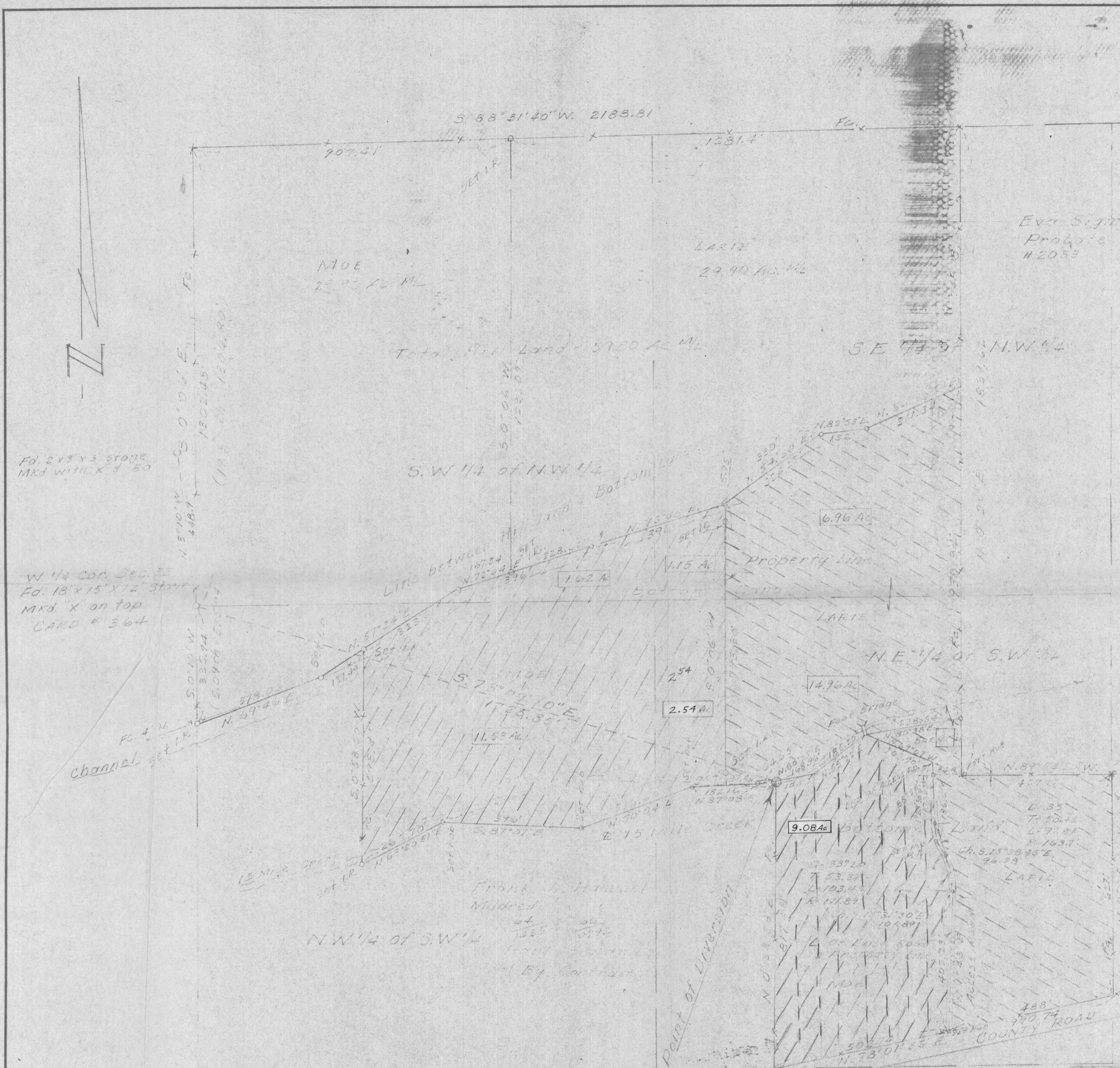


STATE ENGINEER
SALEM, OREGON



SUMMARY

Owner	Sub-div. of Sec. 33	Acres (To be irrig.)	Total
Moe	S.W. 1/4 of N.W. 1/4	1.62	
Moe	S.E. 1/4 of N.W. 1/4	1.15	
Moe	N.W. 1/4 of S.W. 1/4	11.53	
Moe	N.E. 1/4 of S.W. 1/4	11.62	
			25.92
Larie	S.E. 1/4 of N.W. 1/4	6.96	
Larie	N.E. 1/4 of S.W. 1/4	14.96	
			21.92

- 49337 // // // // = 2 Moe LEGEND
- 49338 // // // // = 1 Mbe land to be irrigated
- 49336 // // // // = Larie land "

RECEIVED
APR 4 1978
WATER RESOURCES DEPT.
SALEM, OREGON

Application No. 49336, 49337, 49338
Permit No. 36986, 36987, 36988

TENNESON ENGINEERING CORP.
412 West Second Place
The Dalles, Oregon

Date	No.	Revisions	By	App.
7-26	2	Added data for Water Permits	VF	
12-27	1	Revised Div. Lines & Distances	VF	

MAP FOR WATER PERMITS FOR CHAS. LARIE & WILFORD MOE, IN SEC. 33 TWP. 1 S., R. 13 E., W. 1 M., WASCOCO COUNTY, OREGON.

Design	Checked	Approved	Work Order No.	Scale
VF	VF	VF	4273	1" = 200'
Survey	VF			Date 12-78
Drawn				Sheet 1 of 1