

APPROVALS

BY ORDER OF THE COUNTY COURT

APPROVED Jan. 30 1961

*V.T. Jackson*

COUNTY JUDGE

*Roy S. ...*

COMMISSIONER

BY ORDER OF THE COUNTY COMMISSION

APPROVED Jan 26

*Joseph M. ...*  
CHAIRMAN

*Donald B. ...*  
SECRETARY

APPROVED January 27 1961

*Edward W. ...*  
COUNTY ASSESSOR

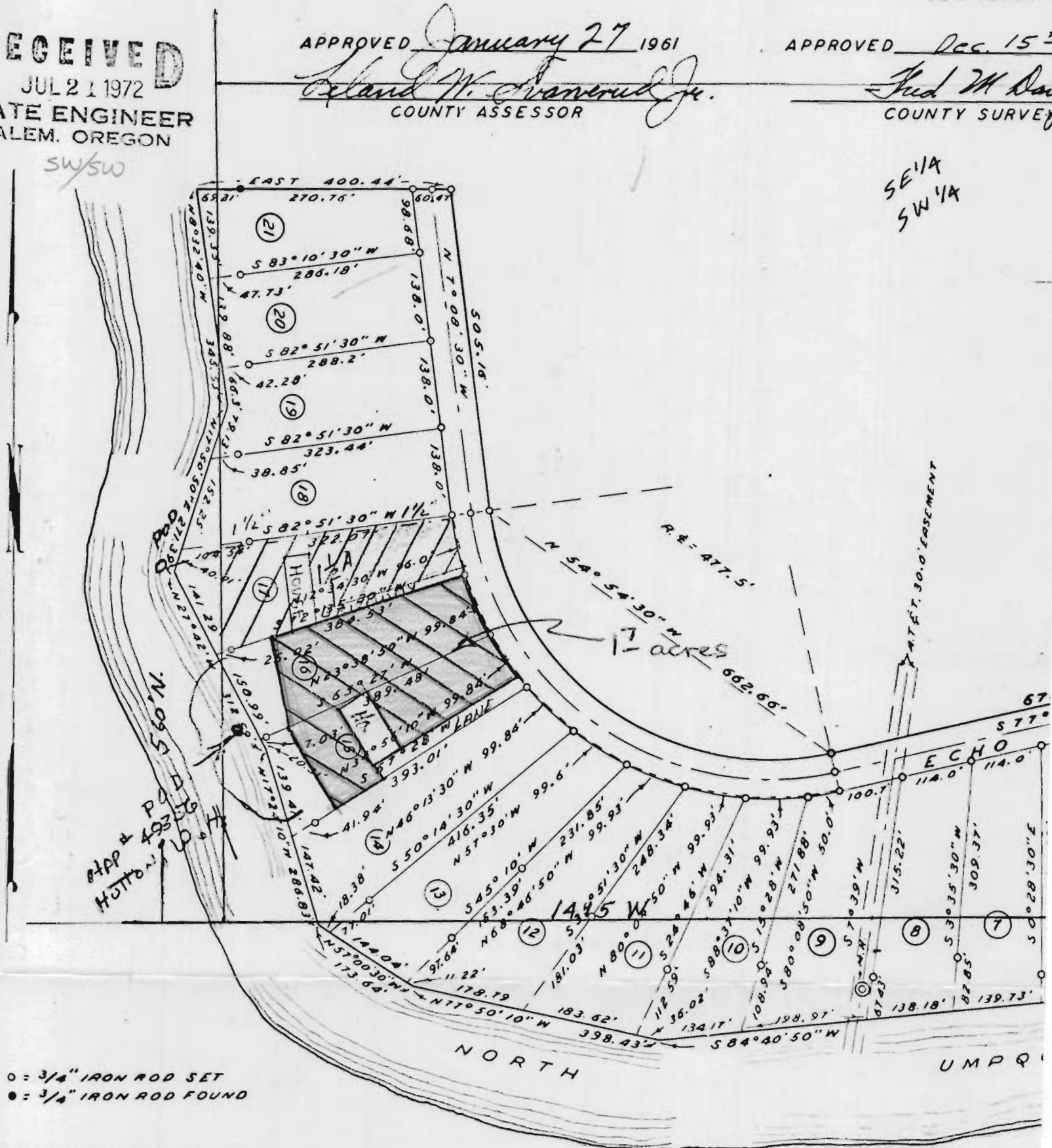
APPROVED Dec. 15

*Fred M. ...*  
COUNTY SURVEYOR

RECEIVED  
JUL 21 1972  
STATE ENGINEER  
ALEM. OREGON

SW/SW

SE 1/4  
SW 1/4



○ = 3/4" IRON ROD SET  
● = 3/4" IRON ROD FOUND

NOTE: BEARINGS BASED ON  
S 0° 13' E TRUE, PER C.S. FILE  
52/54.

A-49356  
P-37000

William H. Hutton

STATE OF OREGON }  
COUNTY OF DOUGLAS } ss  
I, CHAS. DOERNER, COUNTY CLERK OF DOUGLAS COUNTY OREGON,  
DO HEREBY CERTIFY THAT THE WITHIN COPY OF PLAT HAS BEEN BY ME  
COMPARED WITH THE ORIGINAL THEREOF AND THAT IT IS AN EXACT  
COPY OF THE WHOLE THEREOF AS THE SAME APPEARS ON FILE IN MY

STATE OF OREGON }  
COUNTY OF DOUGLAS } ss  
I, JAMES W. BYRON  
THAT I AM THE SURVEYOR  
FINAL MAP OF "ECHO BL  
TRACING IS AN EXACT