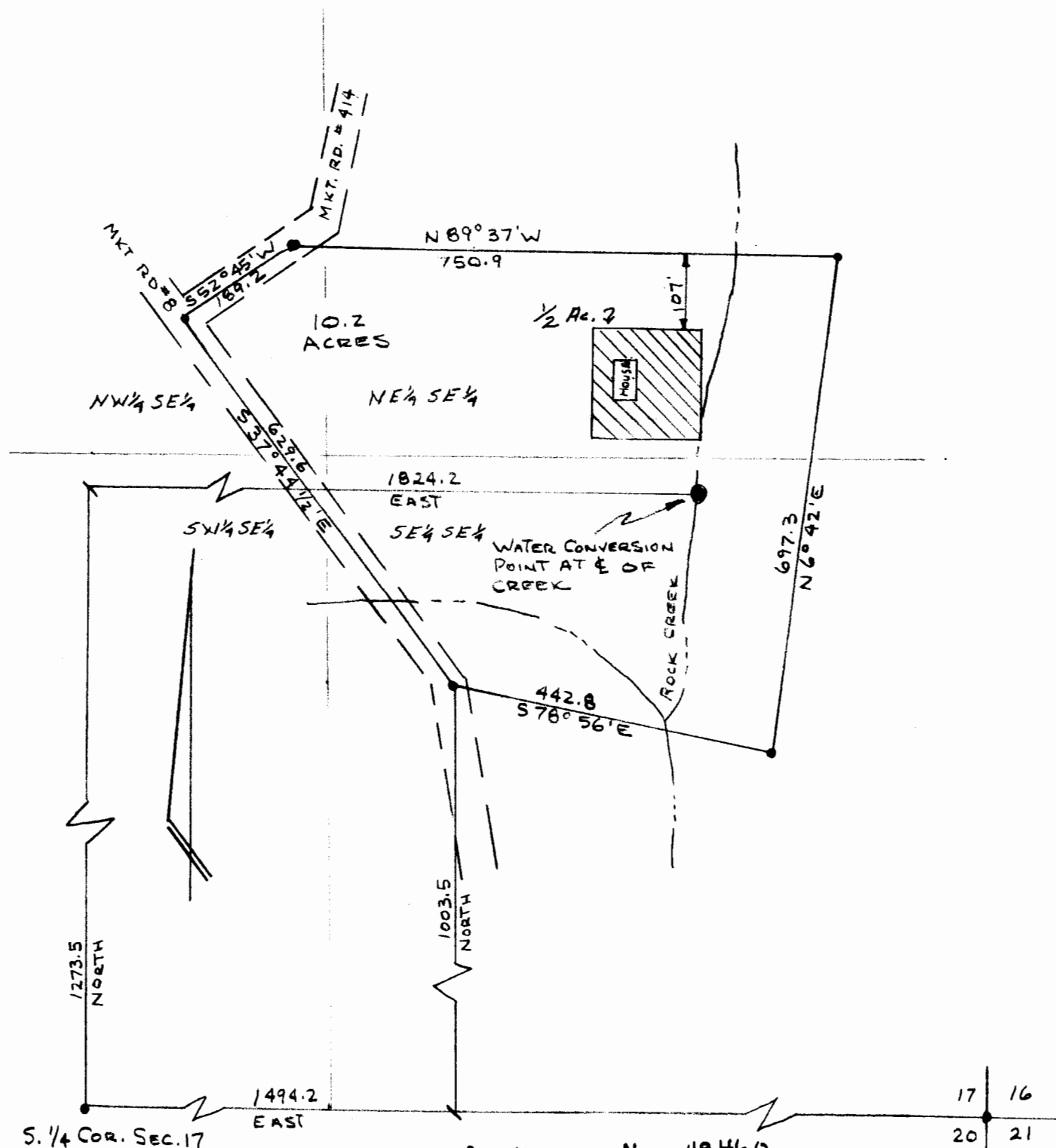


**RECEIVED**  
 AUG 4 1972  
 STATE ENGINEER  
 SALEM OREGON

SURVEY FOR N. WRIGHT  
 FOR WATER CONVERSION POINT  
 IN SEC. 17, T55, R6W W.M.  
 SCALE 1" = 200'  
 AUGUST, 1972



Application No. 49460  
 Permit No. 37049

17	16
20	21