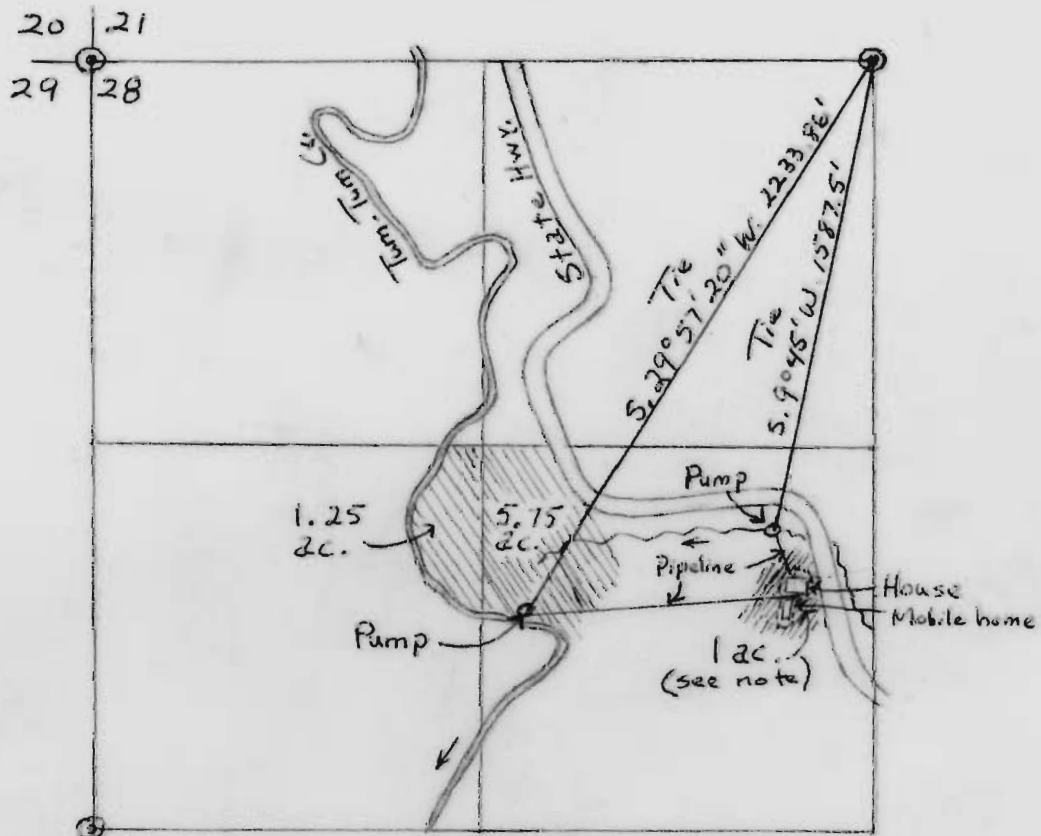


RECEIVED
 OCT 20 1972
 STATE ENGINEER
 SALEM OREGON

Application No. 49294
 Permit No. 37105



NW 1/4, Sec. 28, T. 11 S., R. 7 W., W.M.

SCALE: 1" = 10 chains

NOTE: UNNAMED STREAM TO SERVE THE TWO HOMES AND LAWN AND GARDEN AREAS ADJACENT TO THE TWO HOMES. THIS 1.0 AC. TO BE IRRIGATED FROM TOM-TUM CR. LIES OUTSIDE OF THE IMMEDIATELY ADJACENT LAWN AND GARDEN AREAS.

File #: 49294
 Tom W. Wilson