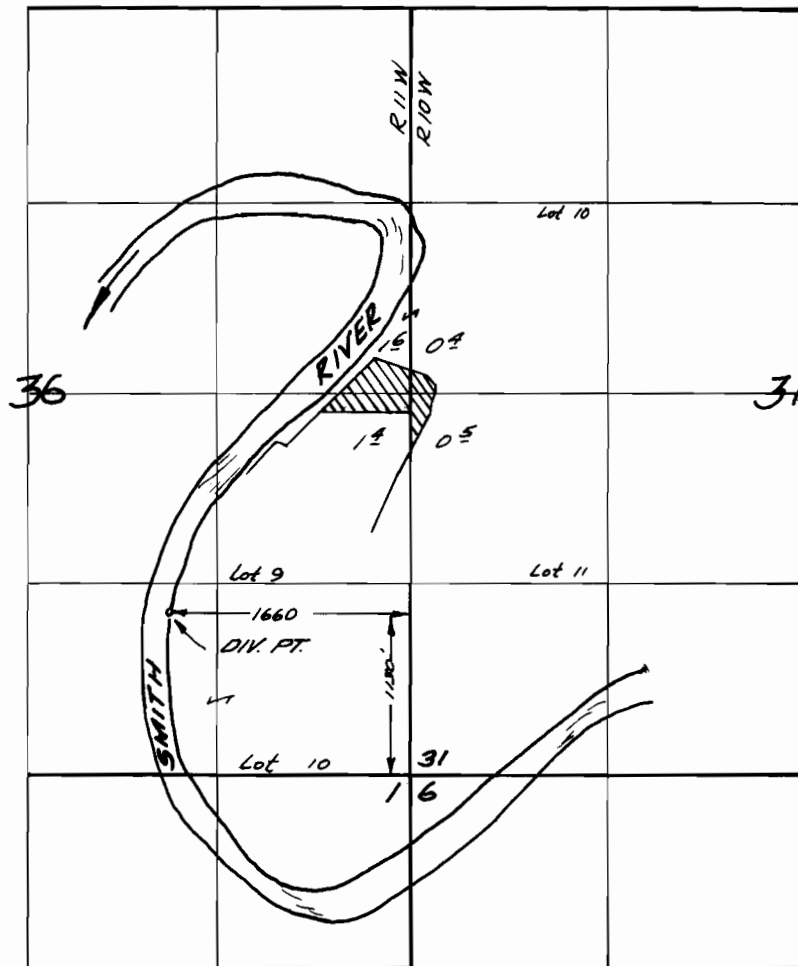


**RECEIVED**

AUG 3 1972

STATE ENGINEER  
SALEM, OREGON

T. 20 S. R. 10 & 11 W. W.M.



Water RIGHTS Application map for:-

COOS HEAD TIMBER COMPANY.

drawn by VRS from BTR-6HH-103 (permit # 32176)  
Scale 1" = 1320'

COOS HEAD TIMBER COMPANY

Approved by: \_\_\_\_\_

President

Application No. 49651  
Permit No. 37184