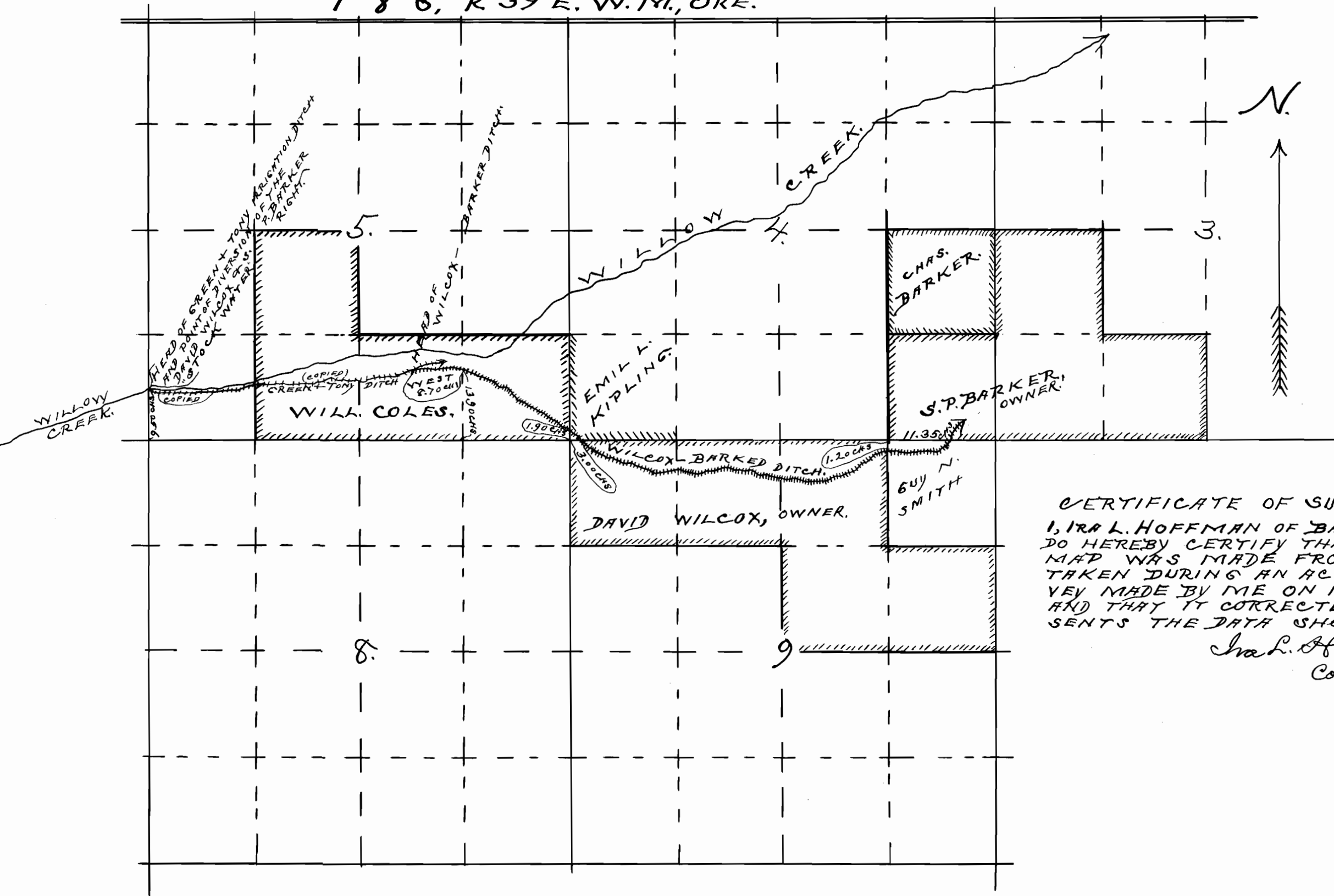


T 8 S, R 39 E, W. 14, ORE.



CERTIFICATE OF SURVEYOR.
 I, IRA L. HOFFMAN OF BAKER, ORE.
 DO HEREBY CERTIFY THAT THIS
 MAP WAS MADE FROM NOTES
 TAKEN DURING AN ACTUAL SUR-
 VEY MADE BY ME ON NOV. 21, 1917,
 AND THAT IT CORRECTLY REPRESENTS
 THE DATA SHOWN THEREON

Ira L. Hoffman,
 County Surveyor.

SKETCH
 SHOWING
 THE LOCATION OF THE
WILCOX-BARKER DITCH
 IN SECS. 5, 8, 9, T 8 S, R 39 E, WILL. ME.,
 BAKER CO., ORE.
 SCALE, ONE INCH = 20.00 CHS.
 SURVEY MADE, NOV. 21, 1917.

Ira L. Hoffman,
 County Surveyor.

5995
 3721