

1/16 BY G.L.D.

See Map 191

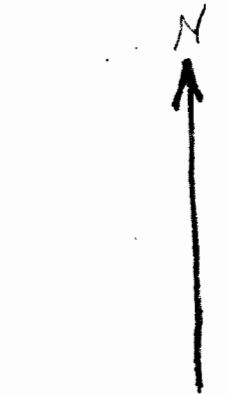
T 12 S R 14 E
Scale 1" = 200'

Woahink Park
Book 27, Page 25
Lane County, Ore Plat Records

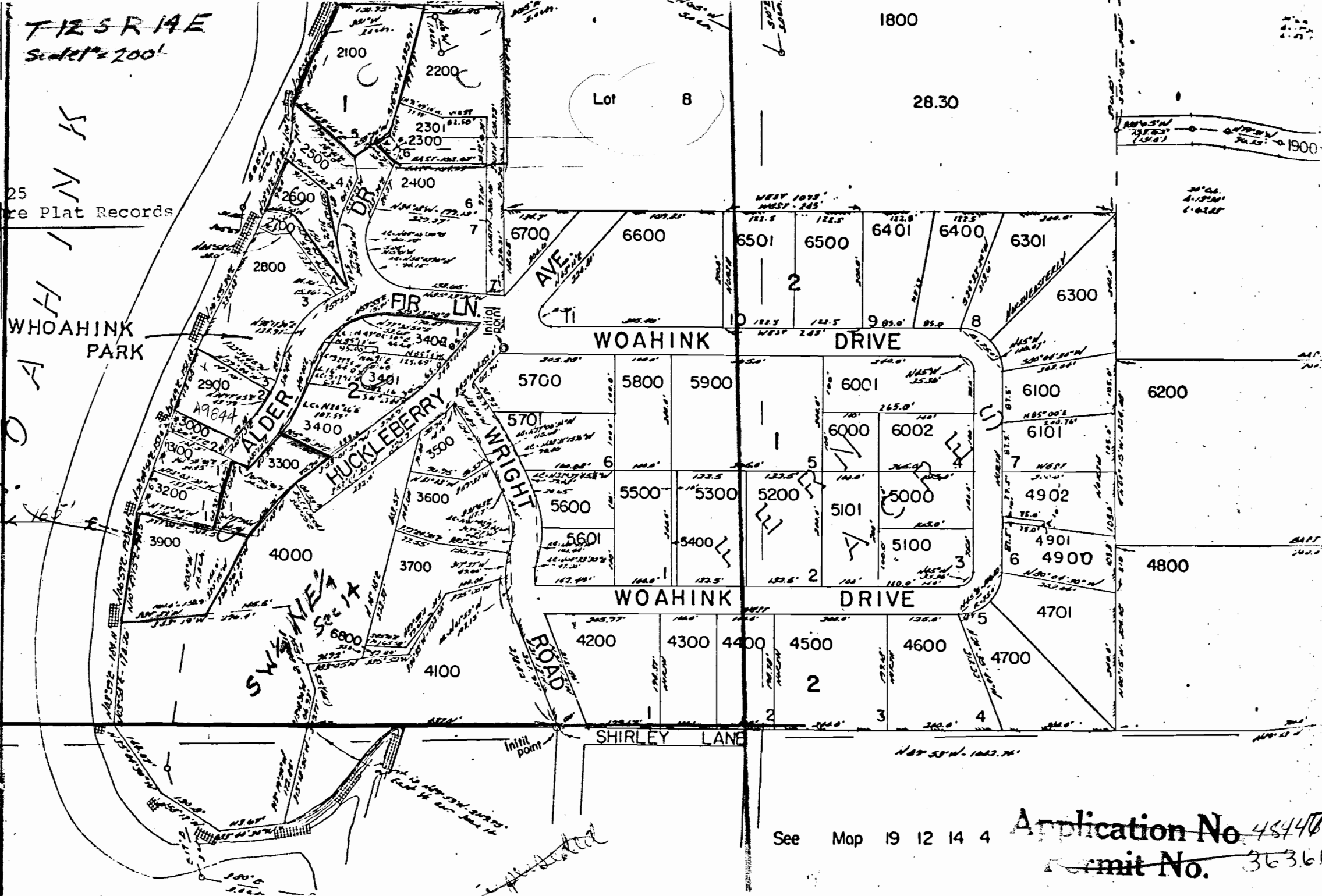
RECEIVED
JUL 15 1971
STATE ENGINEER
SALEM OREGON

H O A H I N K

WHOAHINK PARK



Center
of
lot
of
sec 14
located
through
lot 7 by plat



See Map 19 12 14 4

Application No. 45447
Permit No. 363.66