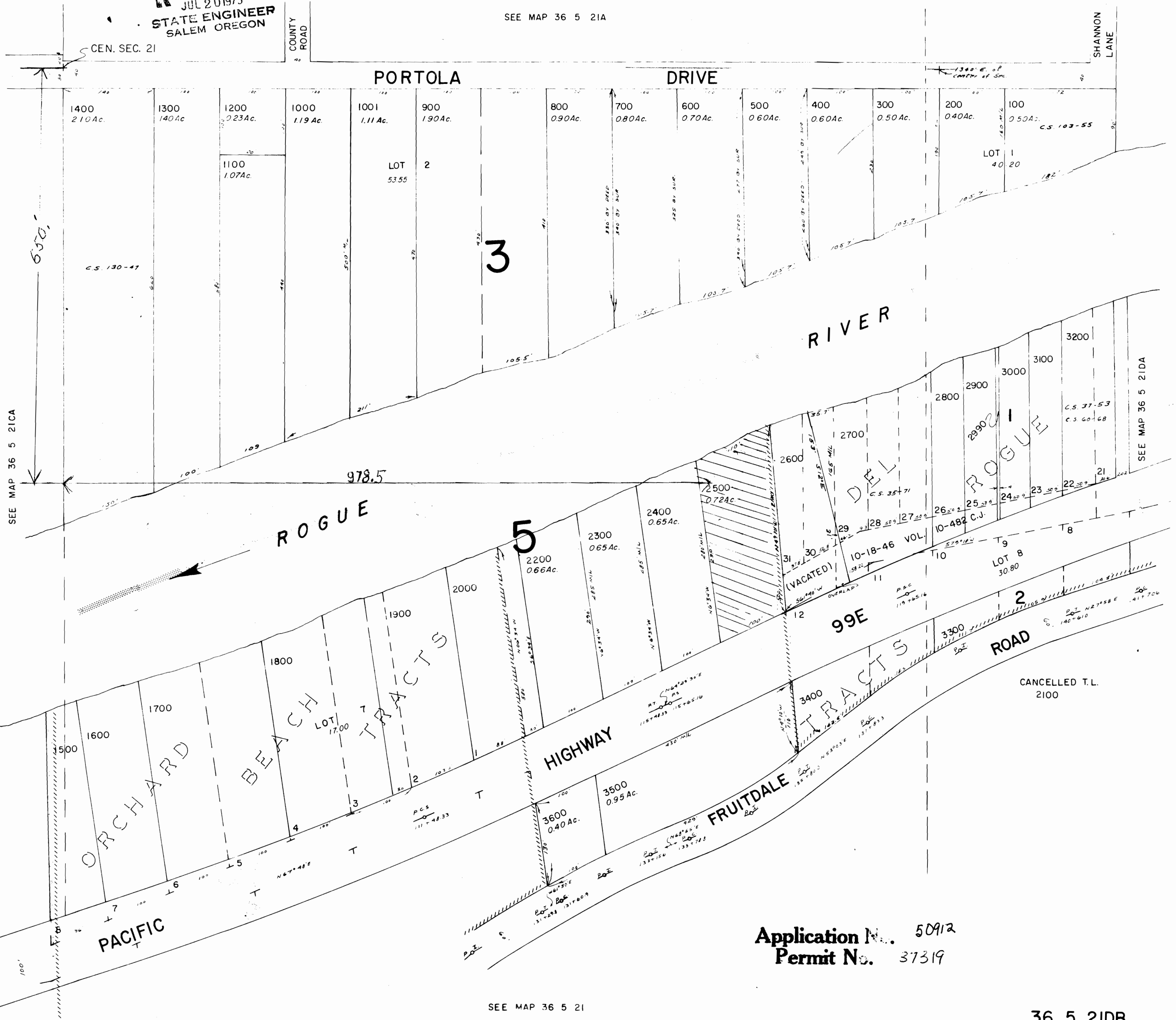


RECEIVED
JUL 20 1973
STATE ENGINEER
SALEM OREGON

SEE MAP 36 5 21A



SEE MAP 36 5 21CA

SEE MAP 36 5 21DA

CANCELLED T.L.
2100

Application No. 50912
Permit No. 37319

SEE MAP 36 5 21

5-29-65 NEAL