

MAP

Accompanying application of J. H. TYRRELL and JOHN WALCH of Lake Creek, Oregon, for permit to appropriate the stored waters of Lost Creek, Reservoir, situate in T<sub>37</sub>.S.R.2.E.W.M. as supplemental supply to acquired rights, and further rights under this application to their lands as shown on plat, and attached description.

February 1918.

Description of Lands under this application as shown and platted on Map.

Decreed to Randall now owned by John Walch

- 5 ac in N.E.<sup>4</sup> of SE.<sup>4</sup>
- 12.5 " SE.<sup>4</sup> of SE.<sup>4</sup> all in Sec 4.
- 7 " NW.<sup>4</sup> of SW.<sup>4</sup>
- 6 " SW.<sup>4</sup> of NW.<sup>4</sup> all in Sec 3
- 30.5

Decreed to J. H. Tyrell

- 3. ac in NE.<sup>4</sup> of SE.<sup>4</sup>
- 17 " SE.<sup>4</sup> of NE.<sup>4</sup> all in Sec 9
- ~~5 " SE.<sup>4</sup> of NE.<sup>4</sup> all in Sec 16~~
- 20

Lands under supplementary supply under this application.

Walch App N<sup>o</sup> 5061 Permit N<sup>o</sup> 3084

- 10 ac in SW.<sup>4</sup> of NW.<sup>4</sup>
- 5 " NW.<sup>4</sup> of SW.<sup>4</sup> all in Sec 3
- 20 " NE.<sup>4</sup> of SE.<sup>4</sup>
- 20 " SE.<sup>4</sup> of SE.<sup>4</sup> all in Sec 4
- 5 " NE.<sup>4</sup> of NE.<sup>4</sup> " Sec 9
- 60

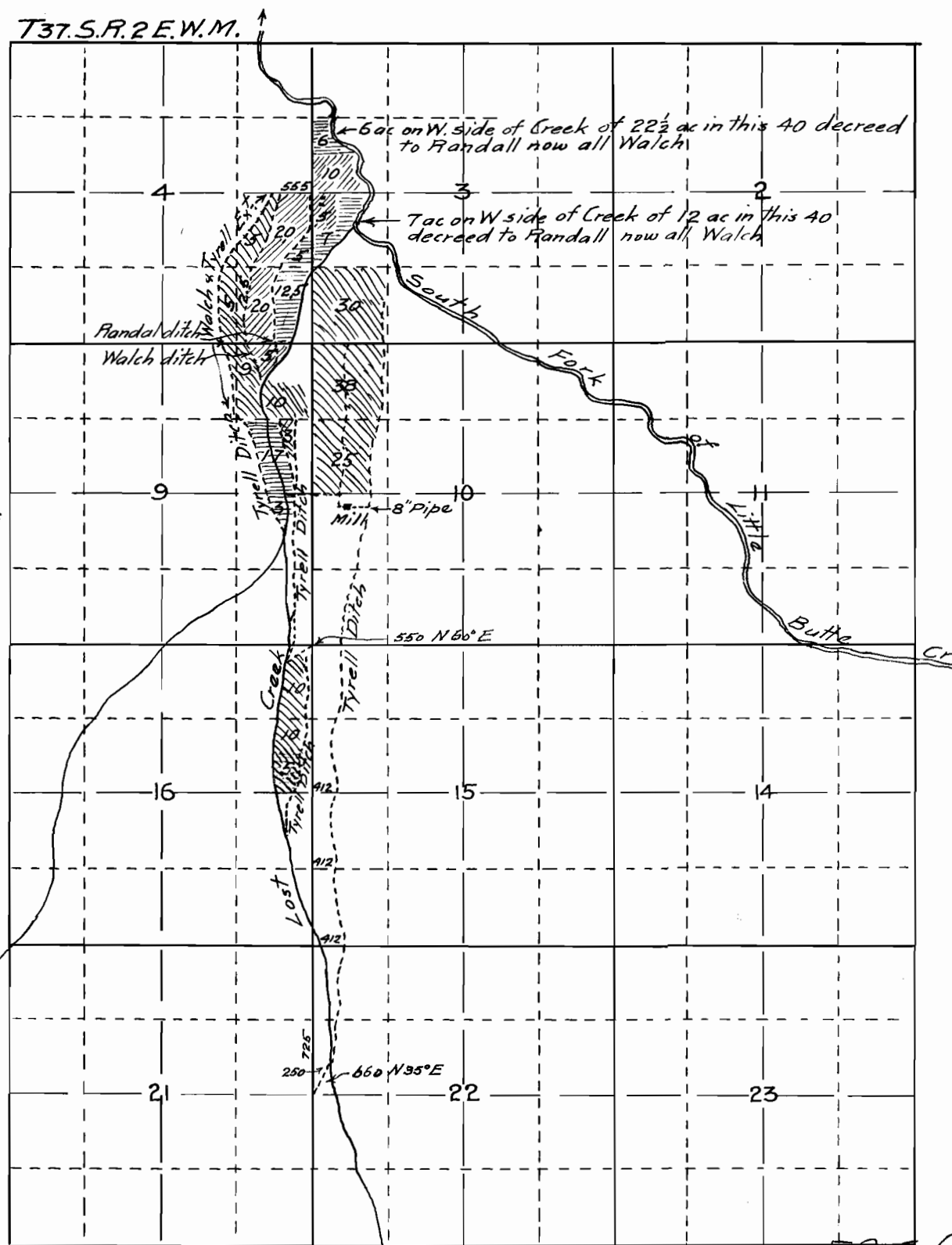
New lands under this Application

- 30 ac in SW.<sup>4</sup> of SW.<sup>4</sup> all in Sec 3
- 5 " NE.<sup>4</sup> of SE.<sup>4</sup>
- 2.5 " SE.<sup>4</sup> of SE.<sup>4</sup>
- 5 " SW.<sup>4</sup> of SE.<sup>4</sup> all in Sec 4
- 19 " NE.<sup>4</sup> of NE.<sup>4</sup>
- 3 " SE.<sup>4</sup> of NE.<sup>4</sup> all in Sec 9
- 10 " NE.<sup>4</sup> of NE.<sup>4</sup>
- 15 " SE.<sup>4</sup> of NE.<sup>4</sup> all in Sec 16
- 38 " NW.<sup>4</sup> of NW.<sup>4</sup>
- 25 " SW.<sup>4</sup> of NW.<sup>4</sup> all in Sec 10
- 152.5

Corrected, see St. Eng  
Letter Feb 25 1918. FNC

Map compiled from Official records and plats of the above lands and from notes and measurements taken in the field of the new lands by J. H. Tyrell and John Walch the same correctly showing all lands to be irrigated, together with streams and ditches in the immediate vicinity.

Fred. N. Cummings. C.E.



5989  
3733