

POLK COUNTY

SCALE 1"=400'

Application No. 52140
Permit No. 37545

SEE MAP NO 7 4 23

RECEIVED
JUL 21974
STATE ENGINEER
SALEM, OREGON

22 | 23
27 | 26

DEAD NUMBER

- TL 300
- TL 301
- TL 305
- TL 401
- TL 501
- TL 1401
- TL 1801
- TL 1706
- TL 2800
- TL 3002
- TL 3301
- TL 503
- TL 1707
- TL 1712
- TL 2101
- TL 2301
- TL 2501
- TL 1902
- 1714
- 1715
- 1716
- 1717
- 1602

ETLY NE CORNER
J M ALLEN
DLC NO 50

SEE MAP NO 7 4 27

SEE MAP NO 7 4 25

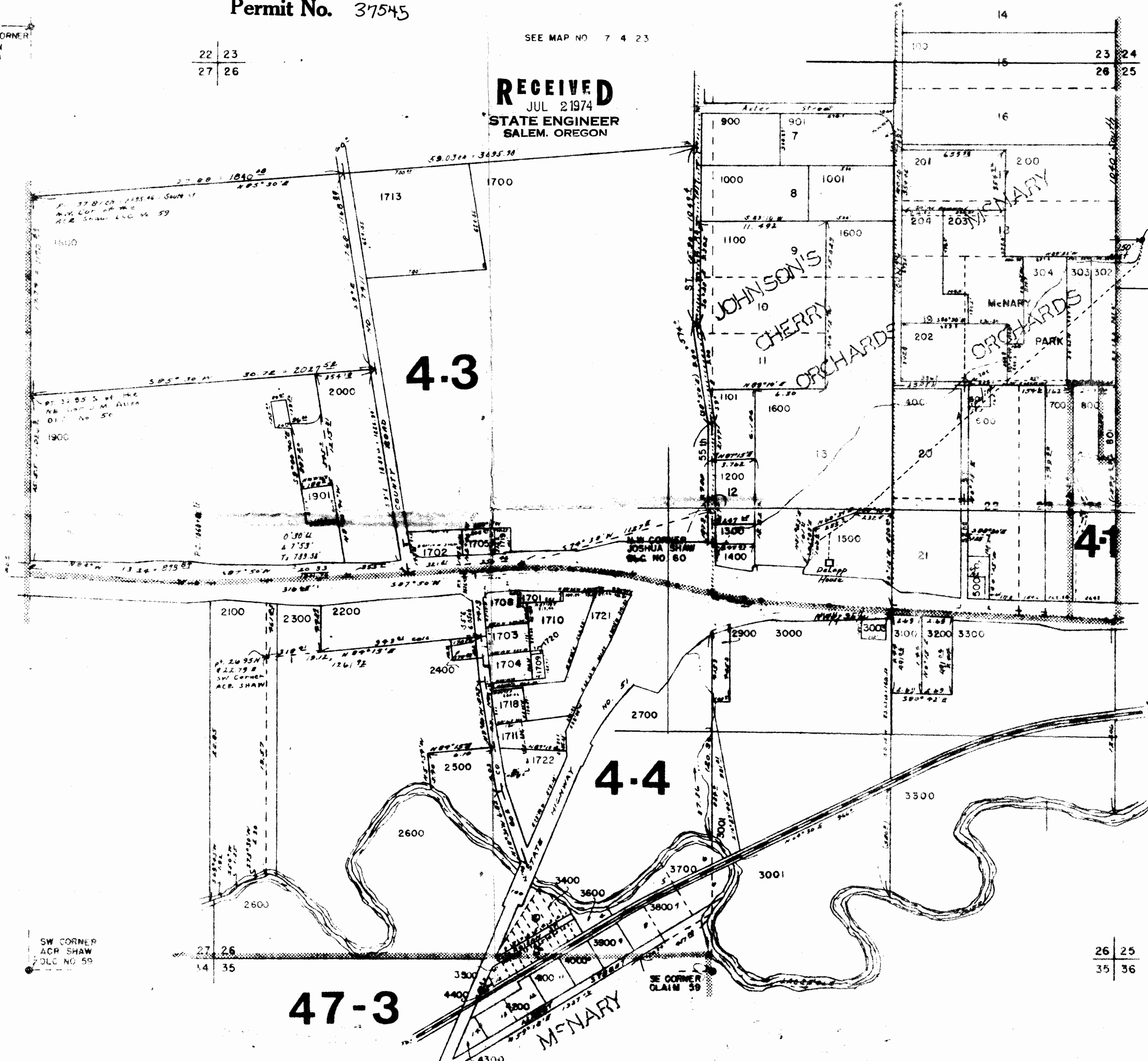
270'S
1680'W

290'S

27 | 26
14 | 35

26 | 25
35 | 36

47-3



SW CORNER
ACR SHAW
DLC NO 59

SE CORNER
CLAIM 59