

**RECEIVED**  
DEC 1 1972  
STATE ENGINEER  
SALEM, OREGON

SFC 13 660'

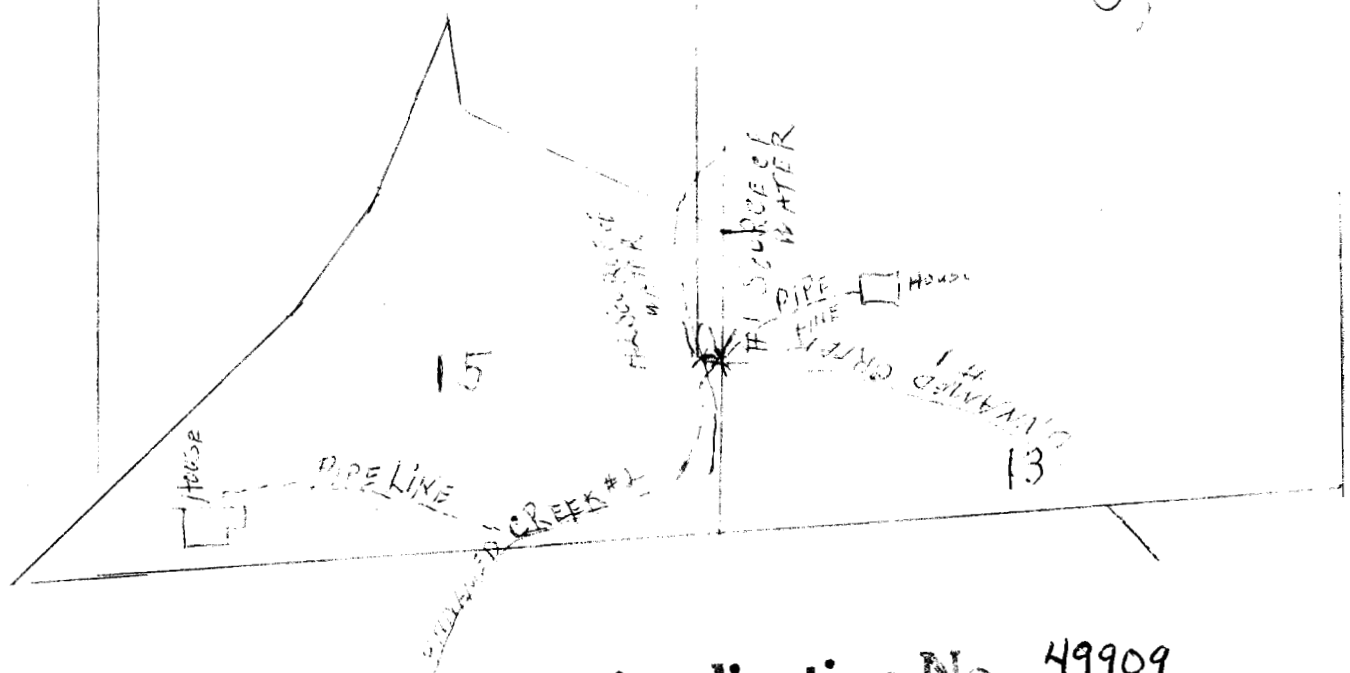
T4NR3 WM 635'

1/4 corner

SEC 24



SCALE  
1" = 200'



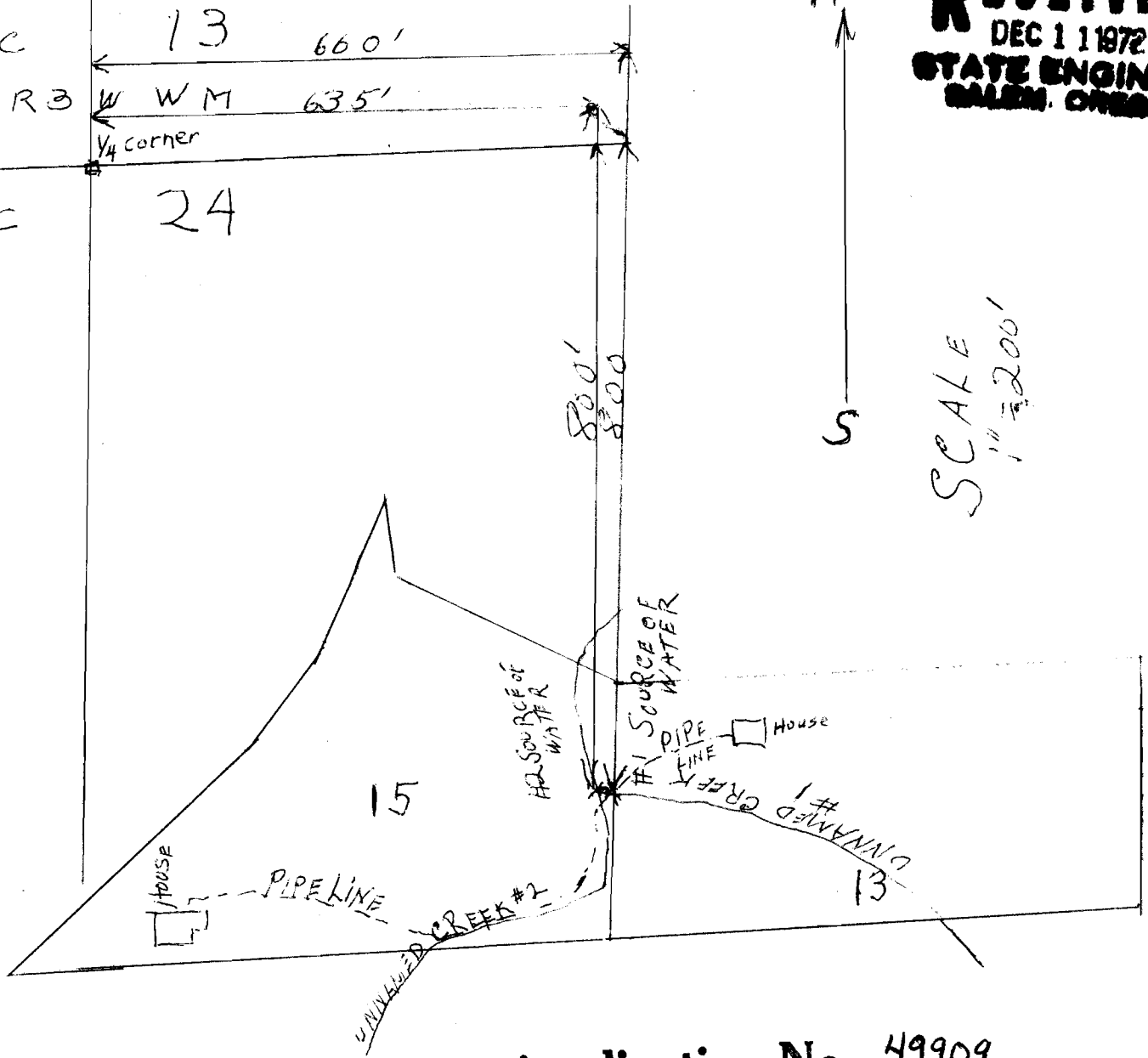
Application No. 49909  
Permit No. 37557

SEC 13 660'  
T4NR3 W W M 635'  
V<sub>4</sub> corner  
SEC 24

RECEIVED  
DEC 1 1972  
STATE ENGINEER  
SALEM, OREGON

N  
S

SCALE  
1" = 200'



Application No. 49909  
Permit No. 37557